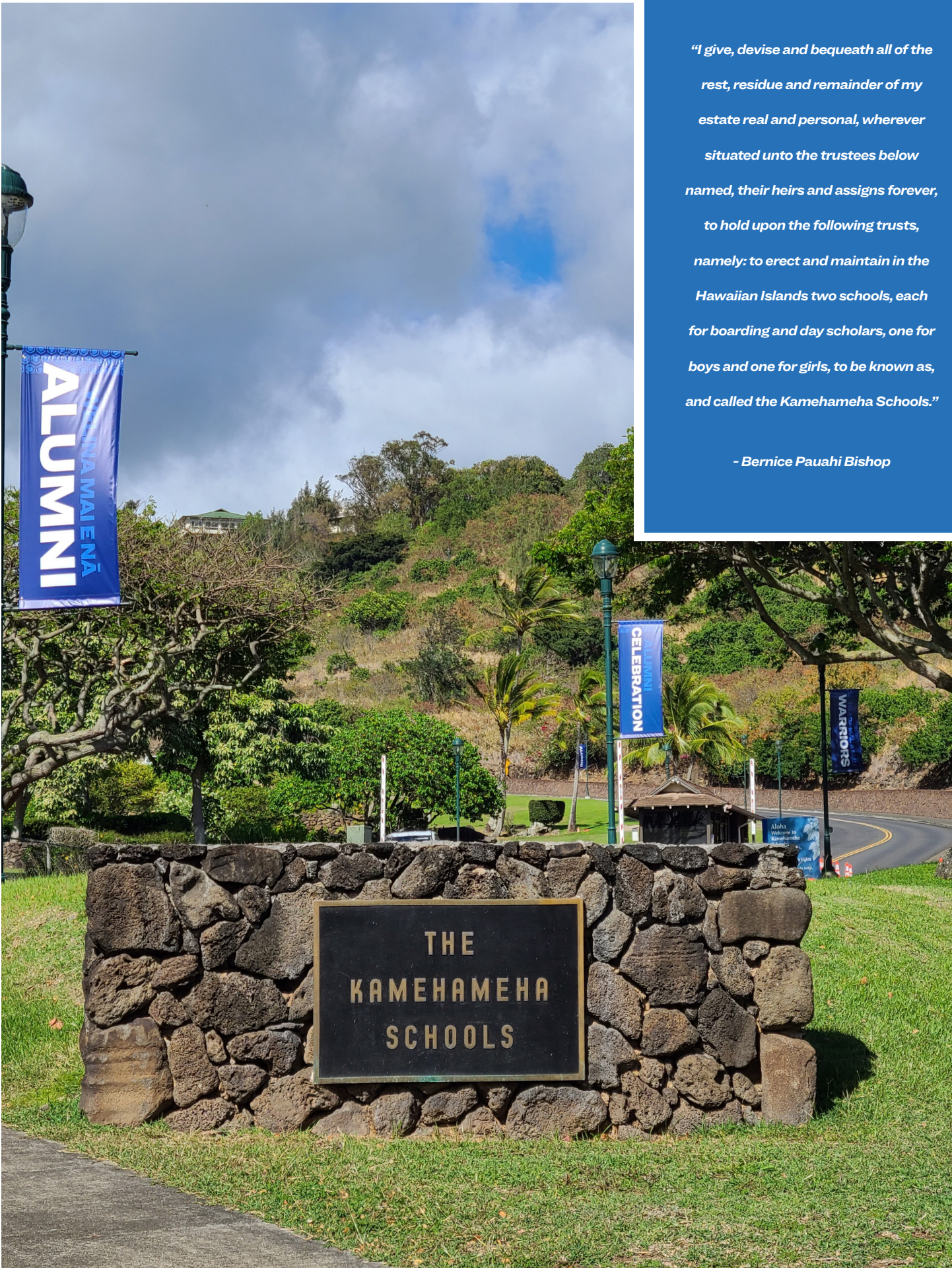


ALUMNI REUNION CELEBRATION

June 2022 | Kamehameha Schools





"I give, devise and bequeath all of the rest, residue and remainder of my estate real and personal, wherever situated unto the trustees below named, their heirs and assigns forever, to hold upon the following trusts, namely: to erect and maintain in the Hawaiian Islands two schools, each for boarding and day scholars, one for boys and one for girls, to be known as, and called the Kamehameha Schools."

- Bernice Pauahi Bishop

Welcome to The Kamehameha Schools Alumni Reunion Celebration

Aloha mai e nā pua a Ke Ali'i Pauahi,

The last two years, COVID-19 pandemic forced us to re-evaluate how we engage with our KS Alumni 'ohana. The safety of our most vulnerable 'ohana led to our canceling Alumni Week in 2020 and moving to a completely virtual celebration, and attempting a hybrid celebration in 2021 for the first time. We are excited to welcome our celebrating classes ending in twos and sevens, and to welcome you back home. Welina mai ke aloha no Kamehameha!

This year, we celebrate He Koa Mau a Mau – Forever a Warrior. It's about celebrating our uniqueness and never forgetting that wherever you go, you are always part of the Kamehameha 'Ohana; Warriors bleed blue and white!

This year, our Alumni Reunion celebration travels each week in June, starting on O'ahu, on to Maui in week two, then Hawai'i Island in week three, and wrapping up back on O'ahu with a virtual Memorial Chapel, honoring those Warriors who have left us. Bringing back our virtual huaka'i, the Loina Kamehameha video series will explore different commercial market areas and their connection with our 'Āina Pauahi agriculture and conservation lands.

I am inspired daily by our Founder, the work we do, the keiki I see at our campuses, preschools and in our communities, but ultimately, I look upon the sea of alumni each year and I am awed. Know that our Princess would be so proud to witness the gathering of thousands of her pua in celebration and realize their collective commitment to continuing her legacy for future generations to build upon.

I mua Kamehameha!

Pono Ma'a

Pono Ma'a KSK'82
Director, Office of Advancement
Executive Director, Ke Ali'i Pauahi Foundation



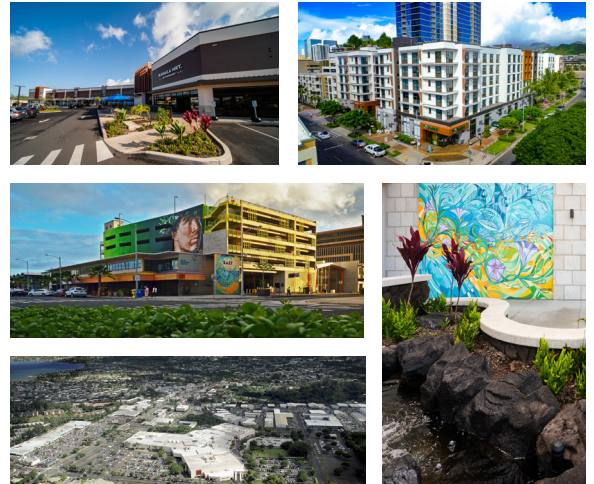
Loina Kamehameha

WEEKLY VIRTUAL HUAKA'I

 ksbe.edu/alumnireunion

Learn about KS commercial lands through our “Loina Kamehameha” series of videos. This year’s series is presented by the Commercial Real Estate Division. Each week a new video will showcase different commercial market areas and their connection with our ‘Āina Pauahi agriculture and conservation lands.


For more information, please visit ksbe.edu/commercial_real_estate



Mele Mondays

E NANEA I KA ‘OLU O KALAUAO, ENJOY THE PLEASantry OF KALAUAO

 Pearl Country Club

 5 - 7:30 pm

 **\$25/per person**

Every Monday in June, enjoy mele by Kamehameha Schools Alumni entertainers, while you share pūpū and pilina in our ‘Āina Pauahi—Kalauao at Pearl Country Club. I Mua!

Doors open at 4:30 pm.



He Koa Mau a Mau - Forever a Warrior

REUNION GIVING

 ksbe.edu/alumni/reunion/reunion_giving

Our kāhea this year is to raise \$500,000 dollars for Pauahi Foundation Scholarships. Giving is a kākou effort that is not limited to our celebrants. If you have never donated before, consider making your first gift. Honor the memory of a classmate, milestone birthday, or graduate. Set a goal for your class and ask your classmates to meet it.

Your gift provides our Native Hawaiian learners with the needed kōkua for their educational success, making the next generation of ‘ōiwi leaders the good and industrious men and women that Ke Ali‘i Pauahi envisioned.



KŪPUNA PĀ'INA (JUNE 9)

📍 Pearl Country Club

🕒 11 am - 1 pm

🎫 **\$25/per person (limit 2)**

Kamehameha Schools honors and celebrates our kūpuna classes, those who have celebrated their 50th Reunion and older. Join us for a luncheon at Pearl Country Club and enjoy mele and pilina in Kalauao.

Hosted by Kamehameha Schools Trustees and leadership.



ALUMNI LŪ'AU EXPERIENCE ON KAPĀLAMA (JUNE 11)

📍 Kekūhaupi'o Gym
Kula Waena (Middle School)

🕒 11 am - 2 pm

🎫 **\$45/per person (limit 2) Street Pā'ina \$5/per person (limit 2)**

Kamehameha Schools welcomes the celebrating classes, of all campuses, ending in "2" and "7". A limited number of tickets for the Lū'au Experience offer alumni the opportunity to enjoy both the live entertainment and Country Store, as well as the outdoor Street Pā'ina at their convenience. Check out the mākeke featuring Alumni vendors, and round up friends and classmates for pictures at the photobooth. Shuttles will run between Kekūhaupi'o Gym and Kula Waena from 10 am until close.

Alumni who are unable to purchase tickets for the Lū'au Experience in Kekūhaupi'o Gym will still have an opportunity to enjoy the company of classmates, DJ entertainment, food truck style mea 'ai, and mākeke at the Street Pā'ina at Kula Waena. Don't forget to support our Student Groups and Clubs by purchasing drinks, snacks, and Warrior gear (all proceeds will go directly to student group/club accounts).

Hosted by Papa 1993.

*During registration, when purchasing tickets for Kekūhaupi'o Gym, you **do not** need to purchase tickets for Street Pā'ina, access is included.



PĀ'INA AT PEARL (JUNE 11)

📍 Pearl Country Club

🕒 5 - 9 pm

🎫 **\$10/per person age 21+ only (limit 2)**

Welcome to your Kamehameha Schools Alumni Hale! Wrapping up our O'ahu celebration with a night market style pā'ina, enjoy live mele, DJ entertainment, food trucks, and a no-host bar.


Ticket includes 2 drink vouchers per person. Parking will be limited on a first-come, first-served basis, carpooling is suggested.

This event is open to all alumni, age 21 and older. **Please pā'ina responsibly.**



Week 2: June 13th-19th

KŪPUNA PĀ'INA (JUNE 16)

 Kamehameha Schools Maui,
Ke'eaumokupāpa'iahehe Dining Hall  11 am - 1pm

 **\$25/per person (limit 2)**

Kamehameha Schools honors and celebrates our kūpuna classes, those who have celebrated their 50th Reunion and older. Join us for a luncheon on Maui campus and enjoy mele and pilina in Pukalani.

Hosted by Kamehameha Schools Trustees and leadership.



ALUMNI LŪ'AU EXPERIENCE ON MAUI (JUNE 18)

 Kamehameha Schools Maui,
Ke'eaumokupāpa'iahehe Dining Hall  11 am - 2 pm



 **\$45/per person (limit 2)**

Kamehameha Schools and Maui Alumni 'Ohana welcome all alumni to enjoy pilina, mele, and mea 'ai on Maui campus. Come early to browse the mākeke and support our region!

Hosted by KSM Alumni, KSAA Maui Region, and KSM Parent & Alumni Office.

Week 3: June 19th-25th

KŪPUNA PĀ'INA (JUNE 23)

 Kamehameha Schools Hawai'i,
Keawe Dining Hall  11 am - 1 pm



 **\$25/per person (limit 2)**

Kamehameha Schools honors and celebrates our kūpuna classes, those who have celebrated their 50th Reunion and older. Join us for a luncheon on Hawai'i campus and enjoy mele and pilina in Kea'au.

Hosted by Kamehameha Schools Trustees and leadership.



ALUMNI LŪ'AU EXPERIENCE ON HAWAII' (JUNE 25)

 Kamehameha Schools Hawai'i,
Keawe Dining Hall  11 am - 2 pm

 **\$45/per person (limit 2)**

Kamehameha Schools and KSAA East Hawai'i Region welcome all alumni to enjoy pilina, mele, and mea 'ai on Hawai'i campus. Come early to browse the mākeke and support our region!

Hosted by KSAA East Hawai'i Region and KSH Parent & Alumni Office.

Week 4: June 26th-30th

MEMORIAL CHAPEL SERVICE

 ksbe.edu/alumnireunion

 10 am - noon

We celebrate the passing of our Alumni 'Ohana by reading their names in remembrance. Join us as we end Alumni Reunion by honoring the classmates of our celebrants, as well as those who have passed this year.



Registration & Event Information

REGISTRATION OPENS

April 1, 2022
AT 9:00 AM HST

Register for events at
ksbe.edu/alumnireunion

Out of respect for the safety and well-being of all in attendance, all guests will be required to adhere to the following KS event guidelines:

- All guests must provide proof of full vaccination (with matching identification). Proof of vaccination includes a hard copy or a digital copy/photo of a state-approved or government-issued vaccination card. Children under the age of 12 are exempt from this requirement.
- Face masks will be required in all indoor venues, while not eating or drinking, and must be worn properly (covering nose and mouth) at all times while on the premises.
- Guests are asked to follow all KS guidelines on safety and social distancing.
- Individuals who develop any symptoms of illness are asked to stay home.
- Registration check-in will proceed at Kula Ha'aha'a (Elementary School). All attendees will receive a wrist band for entry.
- Tickets will not be mailed ahead of events. Your email confirmation will be required for check-in.
- There will be no consumption of alcohol on campus at any time.
- Security and/or event staff reserve the right to refuse entry, or ask any guest to leave campus, if they refuse to abide by safety guidelines.
- Cancellations may be made through Alumni Relations office at (808) 534-8172 or (808) 534-8283 or alumnievents@ksbe.edu. Cancellation requests received by Friday, April 29, will receive a full refund. Cancellations made April 30-May 7 will receive a partial refund. Refunds will be processed beginning June 1.

Photography & Filming: Your attendance at any reunion event indicates your consent, waiver, and release to Kamehameha Schools.

**Our intent is to host this event as we have outlined above. If unforeseen circumstances require us to adjust these plans, we will be sure to communicate that as quickly as possible.*

Kamehameha Schools Alumni Reunion Celebration 2022



Tag us on Facebook and Instagram

@kamehamehaschools and @kamehamehaalumni

When you're joining us at events, and throughout the month of June, be sure to use and follow #ksAlumniReunion2022 and #imuaKamehameha.



Kamehameha Schools®



Pauahi Foundation