



Kamehameha  
Schools®



2023

Hō'ike Kū Makahiki



2023

Hō'ike Kūmakahiki o  
Ke Kula 'O Kamehameha

KAMEHAMEHA SCHOOLS ANNUAL REPORT

JULY 1, 2022 - JUNE 30, 2023



**4**  
**E Ola!**

**5**  
**Welina**

**6**  
**Empowering Ōiwi Leaders**

**7**  
**Educational Spending**

**8**  
**Campuses & Preschools**

**9**  
**Preschools, Financial Aid**

**10**  
**Scholarships**

**11**  
**Community**

**12**  
**‘Āina**

**13**  
**Endowment**

**15**  
**Pauahi Foundation’s Impact**

**16**  
**2022-2023 Donors**

**22**  
**2022-2023 Pauahi  
Foundation Scholarship  
Recipients**



---

**Kamehameha Schools is a private, charitable, educational trust endowed by the will of Hawaiian Princess Bernice Pauahi Bishop (1831-1884), the great-granddaughter and last direct descendant of King Kamehameha I.**

During her lifetime, Princess Pauahi witnessed the rapid decline of the Native Hawaiian population. She knew that education would be key to the survival of her people, and in an enduring act of aloha, she bequeathed to them a precious gift — 375,000 acres of ancestral lands of the royal Kamehameha family and instructions to her trustees that the “rest, residue and remainder of my estate” be used to establish the Kamehameha Schools.

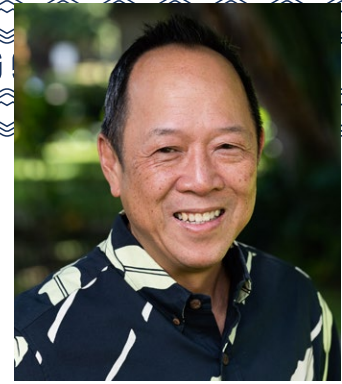
Today, Ke Ali’i Pauahi’s legacy continues to advance her desire to restore her people through education.



# E Ola!

## The Foundation of Nā Kula 'o Kamehameha

Native Hawaiian keiki are at the center of everything we do at Kamehameha Schools. Our goal is to inspire E Ola! learners who are connected to their Hawaiian identity and contribute to their communities as 'ōiwi leaders. We believe that such haumāna are best nurtured in engaging, robust Hawaiian culture-based education learning environments.



**LEFT:**  
Kamehameha Schools Trustees (from left):  
Noelani Goodyear-Ka'ōpua KSK'92, Elliot  
Kawaiho'olana Mills, Crystal Kauilani Rose  
KSK'75, Robert K.W.H. Nobriga KSK'91, and  
Michelle Ka'uhane KSK'86

**ABOVE:**  
Livingston "Jack" Wong  
Chief Executive Officer

# Aloha mai kākou,

Ua piha ka makahiki i hala iho nei i nā hana maika'i, a ma ia mau hana i holomua ai ka papahana 'o *E Ola!* Me ka ho'ohana 'ana o nā kahua kula 'ekolu a me nā kahua kula kamali'i he 30 i nā hopena a'o i ho'okahua 'ia ma ke kuana'ike Hawaii'i, paipai pū 'ia nā limahana a pau e ho'ohana a ho'opili i ia 'ano kuana'ike ma kā lākou hana i kēlā lā kēia lā.

Ho'okumu 'ia 'o KS Kaiāulu no ke kāko'o 'ana aku i nā kaiāulu Hawaii'i, ma ka ho'oikaika a ho'onui 'ana a'e i nā papahana e kāko'o 'ia nei e KS, i nā ha'awina kālā hele kula, a i nā waihana 'ike pūnaewe. Me ke kāko'o o nā 'oihana like 'ole e ho'oikaika 'ia a'e ai nā pilina kaiāulu, ma nā papa hana mo'omeheu, 'ike 'āina a me ka 'ōlelo Hawaii'i.

Eia kekahi, ua no'ono'o hou 'ia ke 'ano e kahu 'ia ai nā 'āpana 'āina. Ua ho'ohui a ho'opa'a 'ia nā 'āpana 'āina a pau no ke kālepa, ka mahi'ai a no ka maluō ho'i ma lalo o ka māhele ho'okahi i kapa 'ia ma ka inoa 'o 'Āina Pauahi. He hana kēia e ho'onui a'e ai a ho'okā'oi ai ho'i i ka ho'okō 'ia o ka nu'ukia.

Ma ka papa hana 'o *E Ola!* e ho'okō 'ia ai ka ho'oilina a ka wahine ho'okumu, a ke Ali'i Pauahi, ma o ka hānai 'ana i nā 'ōpio 'ōiwi e holomua ai ka lāhui Hawaii'i a me ko ke ao nei.

I loko nō na'e o ka pili o kēia palapala hō'ike kūmakahiki i ka wā ma mua o ka 'a'a 'ana mai o ke ahi ma Maui, me nā 'ohana o Maui ko mākou aloha nui pa'a mau, pau pū me ka pule e ho'ōla 'ia ai ka mau'i a e huliāmahi ai ho'i kākou i lāhui ola mau.

Through a year of incredible experiences, we built on the momentum of our collective *E Ola!* journey. With our three campuses and 30 preschool sites embracing learner outcomes grounded in kuana'ike Hawaii'i, we also challenged all of our employees to explore and apply this culturally rooted mindset in their daily work.

We launched KS Kaiāulu to better serve Hawaii'i's communities, improving access to community programs supported by KS, scholarships and online resources. Working alongside many partners who offer enriching Hawaiian culture, 'ōlelo and 'āina-focused learning opportunities also strengthened our community connections across the pae 'āina.

In addition, we started to re-envision our 'āina stewardship with the consolidation of our commercial, agricultural and conservation lands into a unified portfolio called 'Āina Pauahi. The move will expand and enhance our ability to fulfill our educational mission.

Through *E Ola!*, we continue to advance the vision of our founder, Ke Ali'i Pauahi, nurturing the next generation of 'ōiwi leaders to shape a better future for the lāhui, Hawaii'i and the world.

Although this annual report covers the period prior to the Maui wildfires, our devotion to the Maui 'ohana has never been stronger as we heal and pray together as a resilient lāhui.

## E Ola Mau!



# Empowering ‘Ōiwi Leaders

**Committed to holistic education and E Ola! learner outcomes for a thriving Hawai‘i and beyond**

‘O ka pahuhopu no nā kula a pau, ‘o ia ka ho‘ona‘auao a me ka ho‘omākaukau pono ‘ana i nā haumāna ma ka pākahi i ko lākou wā e o‘o ai ma nā māhele a pau o ke ola. ‘O ia ho‘i ka hele kulanui ‘ana, ke ‘ano o ka nohona, a me nā ‘oihana a lākou e koho ai. Ma ka papahana a me nā Hopena A‘o o E Ola! e ho‘okō ‘ia ai ko kākou pahuhopu, ‘o ia ho‘i ka ho‘omākaukau ‘ana i nā haumāna, na lākou e ka‘ika‘i aku i ka lāhui – ma o ka ho‘opa‘a pono ‘ana i ka ‘ike Hawai‘i a me nā pilina i loko o nā ‘ohana a me ke kaiāulu ma Hawai‘i pae ‘āina a ma waho aku o Hawai‘i. Me ka nānā ‘ana i ke kaiāola o ka nahele, kahi e ola maika‘i ai nā lā‘au ‘āpa‘akuma o Hawai‘i, pēlā ke ‘ano o ka nohona ho‘ōla mauli ola ma Nā Kula ma lalo o E Ola! Ma kēia papahana e ‘imi ‘ia nei ka ho‘okō ‘ana i nā mea e pono ai nā haumāna e la‘a me ke a‘o ‘ana a me ka mauli ola e ola ai ho‘i nā haumāna no ka pono o ka lāhui. Eia kā mākou ‘ōlelo pa‘a: E hānai a ho‘oulu ‘ia nā hanauna hou, ‘o lākou ho‘i nā kānaka alaka‘i ‘ōiwi.

Our schools are committed to providing an educational journey that ensures our haumāna are prepared for their future, including postsecondary success and positive life and career choices. We believe that collectively the E Ola! Learner Outcomes contribute to that goal, cultivating learners who will become local and global servant leaders – culturally engaged and committed to strong ‘ohana and communities throughout ka pae ‘āina o Hawai‘i and beyond. Just as a healthy and balanced Native Hawaiian forest allows our native species to thrive, Nā Kula’s holistic learning environment, grounded in E Ola!, seeks to fulfill learners’ social, emotional, and academic needs, so that they not only thrive but also become valued contributors to our lāhui. This is our promise: to raise and nurture generations of ‘ōiwi leaders.



“

An ‘ōiwi leader, to me, is someone who can lead through their Hawaiian values and also demonstrate leadership through their actions and words. For me, both of those were very much developed in student government and really helped me to be an ‘ōiwi leader for the school, and I was really grateful for that opportunity.”

**Keakealani Cashman KSM’24**

[LEARN MORE >](#)

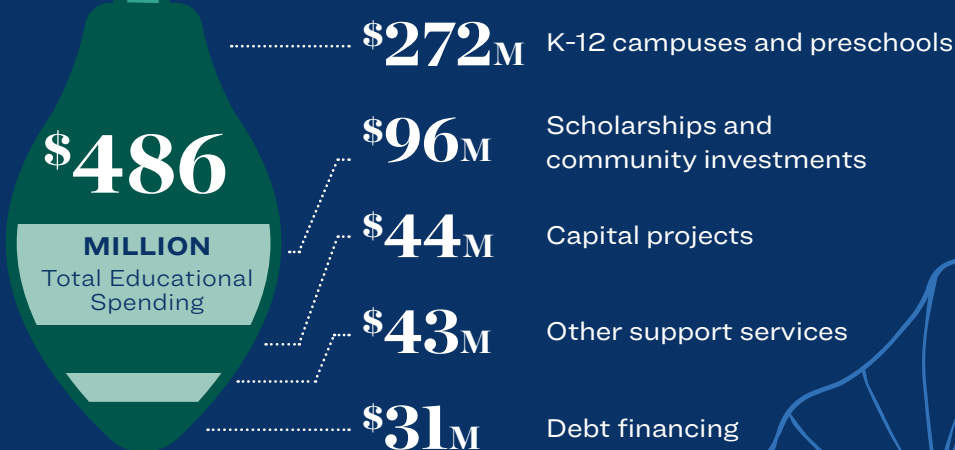
**New tri-campus scholarship brings post-secondary dreams to reality**



**77,536**

Learner Experiences

# Educational Spending



# Campuses & Preschools

7,106

Haumāna in preschool to grade 12

686

Total graduates in 2023

525

Kumu at KS preschools and K-12

**\$230**

**MILLION**

Spent on K-12 learners across three campuses

## KS HAWAII

1,172 133

Enrolled Graduated

## KS MAUI

1,112 125

Enrolled Graduated

## KS KAPĀLAMA

3,162 428

Enrolled Graduated



“

Seeing so many of our high school seniors walk across that stage to receive their associate degree is emotionally fulfilling. Our faculty and staff work so hard to position our haumāna for success, and this helps to validate that hard work. With this degree in hand, these haumāna are better equipped to embrace their kuleana as future 'ōiwi leaders.”

**Wendy Erskine, po'o kumu - KS Kapālama Kula Ki'eki'e**

[LEARN MORE >](#)

**Nearly 100 KS Kapālama seniors earn associate degrees**





“

I will forever be grateful for what he learned and how he learned in kula as it helped our ‘ohana through some extra challenges. We have taken many Hawaiian-based principles taught at school and applied them at home and they have worked.

I cannot say enough about my keiki’s knowledge and awareness of Hawaiian language, culture, mele, mo’olelo, and personal ‘ohana connection. His sense of belonging and understanding of his Hawaiian identity is so strong because of what he has learned in kula. And lastly, our son’s number and letter sense is beyond our preschool expectations. He can literally read numbers in the thousands, count days in the calendar backward and forwards, do simple adding and subtracting, and is an emerging reader.

We feel he is more than ready for kindergarten. Our ‘ohana has not provided any of this education at home so I know he is getting all of this from kula.”

Preschool parent — ‘Ohana Survey, May 2023

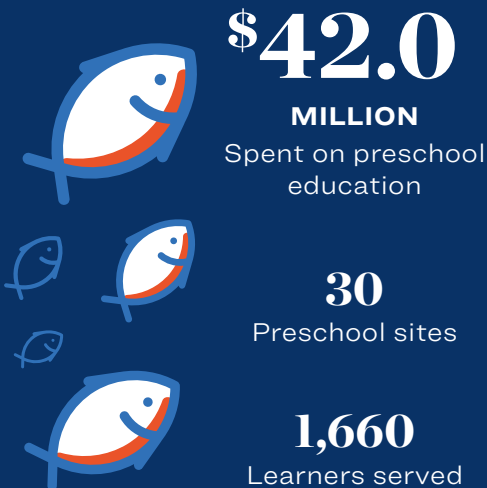


LEARN MORE >

Traditional Hale Building Sparks Joy for Science and ‘Ike Kūpuna



## Preschools



## Financial Aid



# Scholarships



**4,281**  
Learners reached

Pauahi Keiki  
Scholars  
scholarships



Kipona  
Scholarships (K-12)



Post-high  
scholarships

“As rising leaders in our community, we have a responsibility to ensure that future generations of Hawaiians have the opportunity to continue living here in Hawai‘i. Now is the best time to act. We need to first, be educated, and second, vote. We need leaders who will fight for the issues that matter most to the people of Hawai‘i. Participating in these elections is critical to achieving that goal.”

**Cheyenne Sato KSH'23, Texas Christian University**



[LEARN MORE >](#)

**Statewide voter engagement events scheduled ahead of the upcoming general election**

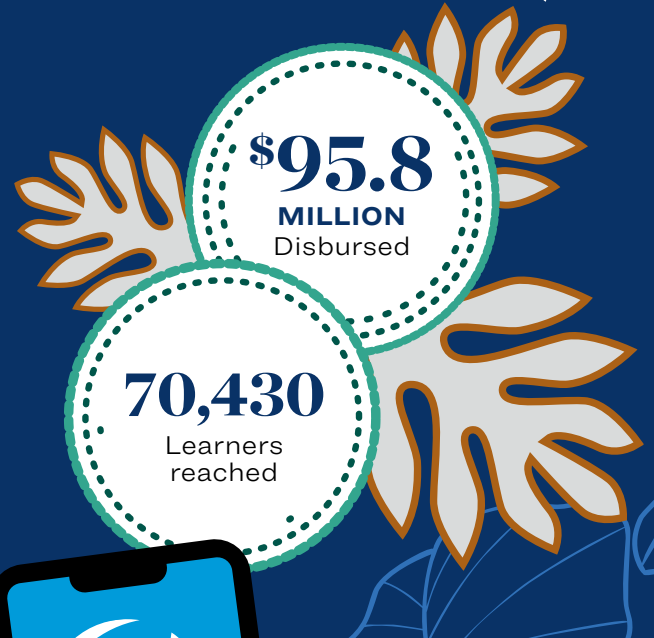


“

With more than 500 valued community partners, we're able to reach learners of all ages through KS Kaiāulu. Our goal is to ensure that Native Hawaiians have opportunities to play significant roles in strengthening ea, our life and breath that allows us to set the course before us and sail to destinations of our own design.”

**Wai'ale'ale Sarsona, vice president of Hi'ialo**

# Community



**LEARN MORE >**

**KS Kaiāulu uplifts sustainable food systems for 'ohana on Hawai'i Island**



**Whether online or on 'āina, find the resources you need all in one place.**



**KS Kaiāulu** brings together Kamehameha Schools' scholarships, online learning resources, community resource centers, and community partners' rich Hawaiian culture, 'ōlelo and 'āina-focused opportunities that grow 'ōiwi leaders--people who use their knowledge, skill, and passion to strengthen Hawai'i, its people, and our global community.



**kaiaulu.ksbe.edu**



“

When I went to Feed The Hunger and explained that I wanted to acquire this new piece of equipment and what it would do to our farm and what it's going to do to productivity and the future of what my dream is for what we do, whether on the poi processing side or the farming side, (Feed the Hunger Fund) didn't hesitate ... they just wanted to know more.”

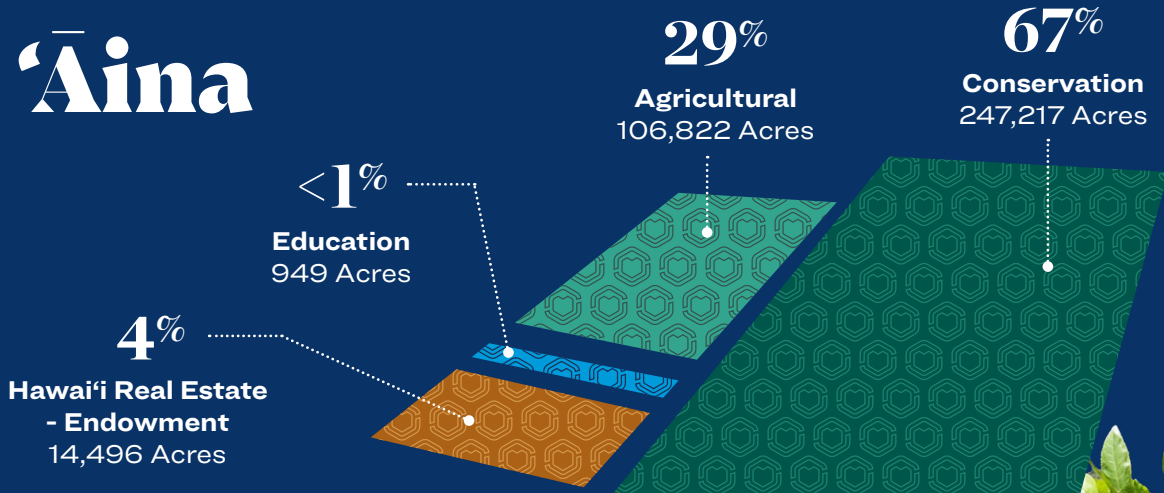
**Kahealani Kaaihili, owner — Mokuwai Piko Poi**

[LEARN MORE >](#)

**Feed The Hunger Fund receives more than \$1 million to invest in small-scale food entrepreneurs**



# ‘Aina



**LEFT:**

Kamehameha Schools has acquired 4,523 acres of land in the Kaupō moku of southeastern Maui, one of two recent acquisitions on that island. An expanded presence on Maui enables Kamehameha Schools to provide new opportunities for haumāna and lasting benefit for the community.

**CENTER:**

Located on ‘Aina Pauahi in Waiawa, this Clearway Energy Group 36-megawatt solar farm generates enough clean electricity to power 7,600 homes each year.

**RIGHT:**

Kamehameha Schools, the State of Hawai'i Department of Land and Natural Resources and Three Mountain Alliance discovered a small population of *Delissea argutidentata*, a plant thought to be extinct in the wild.

**OUR IMPACT**

**\$13.3**  
MILLION

of revenue from our agricultural portfolio supports over 830 farmers and ranchers on 5 islands, producing over 80 different food products across fruits, vegetables, proteins, starches, and specialty crops.

**\$5.5**  
MILLION

invested in the stewardship of our natural, cultural, and water resources

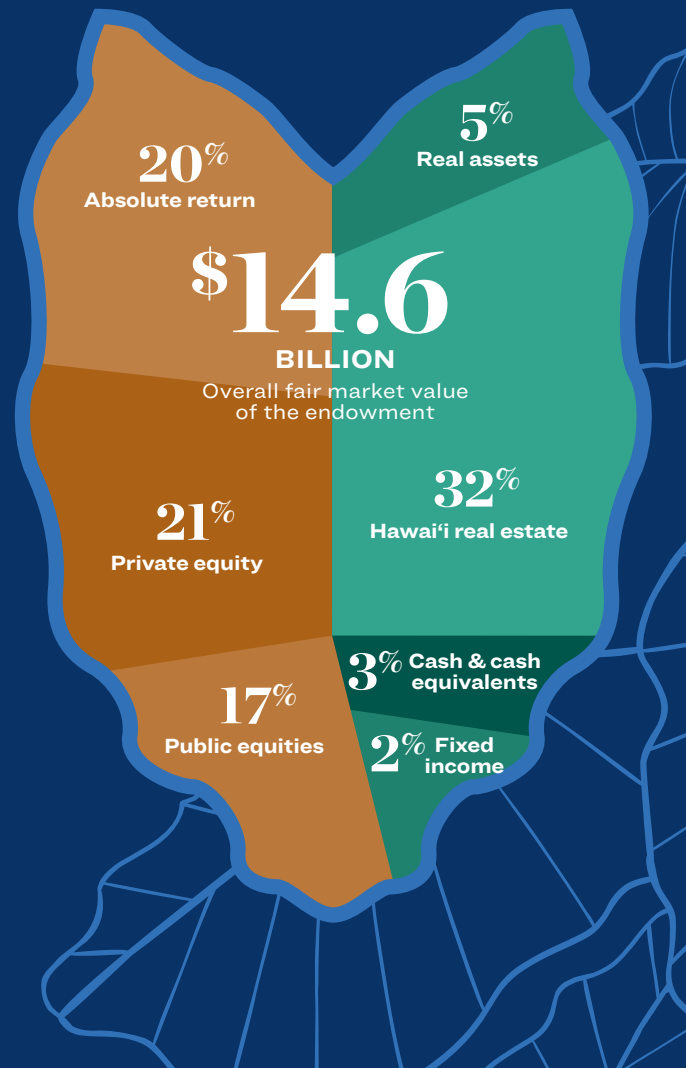
**\$5.4**  
MILLION

invested to support community-based stewardship with 21 ‘āina partners statewide

# Endowment

Kamehameha Schools' mission is 97% supported by its endowment with 3% being supported by tuition, net of financial aid. The endowment was valued at \$14.6 billion as of June 30, 2023. A globally diversified financial assets portfolio of \$9.9 billion, and Hawai'i real estate representing \$4.7 billion at fair market value comprise the endowment's value.

The goal of Kamehameha Schools' endowment is to provide superior risk-adjusted long-term returns to support its mission in perpetuity. The 10-year return added value versus a policy-weighted average of market benchmarks and met its long-term objective of CPI + 5%, an objective designed to provide for real growth and financial equilibrium.



## INVESTMENT RETURNS

	10 Years Annualized	5 Years Annualized	1 Year
Endowment Fund	<b>7.7%</b>	<b>7.9%</b>	<b>0.5%</b>
Policy Benchmark	<b>6.7%</b>	<b>6.7%</b>	<b>-1.9%</b>

## For more...

including a copy of Kamehameha Schools' audited "Consolidated Financial Statements and Supplemental Schedules" for fiscal year 2022-2023, please visit [www.ksbe.edu/annualreports](http://www.ksbe.edu/annualreports)



Welcoming back the lineal descendants of this 'āina to walk the restored grounds and heiau and to share opportunities of cultural learning at Kahalu'u Ma Kai with community partners is a vision come true. We listened to the voices of the past, our kūpuna, to create a new path forward, a new place of learning."

**Jason Jeremiah KSK'00, director of Natural and Cultural Ecosystems**

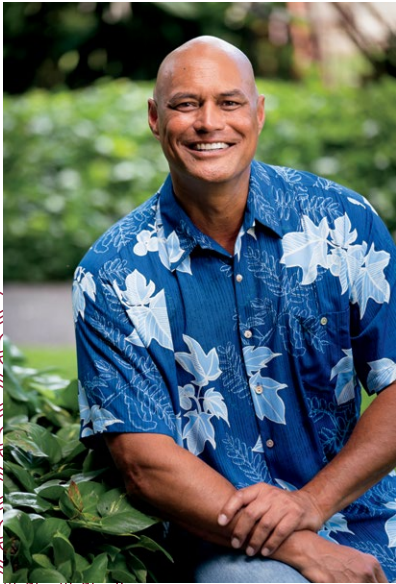


[LEARN MORE >](#)

**'O Kahalu'u Kahi o nā Hālau Lololo  
Kahalu'u, a place of intelligence**



## Ke Ali'i Pauahi's legacy lives on through YOU



### **ALOHA MAI E NĀ KOA O KAMEHAMEHA,**

Looking back on the past year through this Annual Report, I'm reminded of the many ways Ke Ali'i Pauahi laid the foundation to provide high-quality education for Native Hawaiian haumāna. Thanks to the support of KS Alumni, employees, corporations and members of the community, the Pauahi Foundation stewards Princess Pauahi's vision through their gifts.

At the end of the day, if we can help one more Native Hawaiian learner, that makes a difference, and this drives our team. I'm excited for the opportunities ahead as we keep Ke Ali'i Pauahi's vision at the forefront of everything we do.

With the help of our donors, we raised \$2 million and grew our network of donors to more than 1,100 during the 2023 fiscal year. We distributed more than 470 scholarship awards, including six new endowed scholarship funds. Each of these awards represents an opportunity for haumāna to pursue higher education and for an entire community to benefit from their accomplishments as 'ōiwi leaders.

While I am extremely grateful for and proud of these accomplishments, our work isn't done. The Pauahi Foundation's goal is to serve even more scholarship applicants each year and raise money to support early learning, K-12 education, college and 'āina community programming. Please join us today by making a gift at [pauahi.org](http://pauahi.org).

Through our diverse giving campaigns, donors played important roles in perpetuating Ke Ali'i Pauahi's legacy. Supporting scholarships and programs is important as we steward the next generation of 'ōiwi leaders, and we are grateful for your continued support and collaboration.

I look forward to seeing you at our events at the three KS campuses and across 'Āina Pauahi. Please stay tuned for updates from our team via the monthly Kahiau e-newsletter and social media (@pauahifoundation). Stay safe and take good care of yourselves and one another!

Me ka ha'aha'a,

### **Pono Ma'a KSK'82**

Director, Office of Advancement  
Executive Director, Pauahi Foundation

**Make a Gift to  
Pauahi Foundation**





# Pauahi Foundation's Impact

## \$1,025,000

RAISED FOR PROGRAM SUPPORT

Funds raised were dedicated to support haumāna through KS programs and initiatives focusing on excellence in education (pre-K-12), mālama 'āina, and college and career support.

### 315

TOTAL NUMBER OF SCHOLARSHIP RECIPIENTS

### 472

TOTAL NUMBER OF SCHOLARSHIP AWARDS

### 1,101

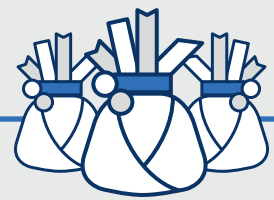
TOTAL NUMBER OF DONORS

### 6

NEW ENDOWMENT SCHOLARSHIP FUNDS

## \$1,307,350

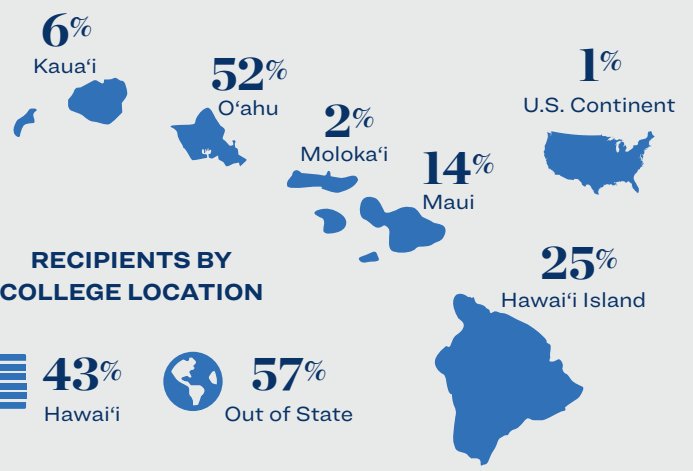
SCHOLARSHIPS DISBURSED FOR ACADEMIC YEAR 2022-23



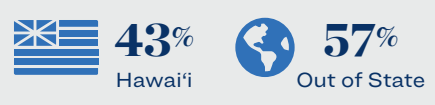
### RECIPIENTS BY FIELD OF STUDY

- 36%** Science & Math
- 11%** Business
- 10%** Liberal Arts, Arts and Social Sciences
- 10%** Health
- 9%** Education
- 7%** Law
- 5%** Hawaiian Culture, Language and History
- 4%** Engineering
- 4%** Other
- 3%** Communications and Journalism
- 1%** Vocational and Technical Studies

### RECIPIENTS BY RESIDENCE



### RECIPIENTS BY COLLEGE LOCATION



\*Some recipients received multiple scholarships



# 2022-2023 Donors

We are grateful for donors who have included the Pauahi Foundation in their charitable giving. With these gifts, the foundation supported aspiring Native Hawaiian students this year with more than 470 scholarship awards. As an educational institution that transforms lives within the Hawaiian community, our mission has never been more relevant. Our giving hui celebrates the breadth and diversity of our donors and the impact of their support. Mahalo for entrusting us with your gifts and helping to further Ke Ali'i Bernice Pauahi Pākī Bishop's legacy.

We are deeply humbled and grateful for the Kamehameha Schools alumni, faculty and staff who made a gift to Pauahi Foundation this fiscal year in addition to their dedicated service. All donors listed are recognized for contributions made during the fiscal year from July 1, 2022, to June 30, 2023.

## KEY

† Deceased

S Kamehameha Schools staff

## KA HUI KŪLANIHĀKO'I \$10,000 OR MORE

Anonymous  
Alaka'ina Foundation  
Dr. Helen Kaleleonalani Blaisdell-Brennan<sup>80</sup>  
Sean<sup>71</sup> and Dodie Browne  
Compass Group USA, Inc.  
Dawn A. Luahiwa Farm-Ramsey<sup>71</sup>  
Fidelity Brokerage Services, LLC  
First Hawaiian Bank  
Goldman Sachs and Co.  
Hawaii Pacific Health  
Randall<sup>68</sup> and Nancy Hee  
Hualalai Investors, LLC  
Kamehameha Schools Hawaii  
Parents and Teachers 'Ohana  
Kamehameha Schools Student  
Activities - Hawaii Campus  
Tux and Darlene<sup>89</sup> MacAuley  
William Henry Kekoa McClellan<sup>102</sup>  
and Nicole Makana Shook  
McClellan<sup>103</sup>  
MSD Partners  
Na Ali'i Consulting and Sales, LLC  
Nakupuna Foundation, LLC  
Nakupuna Solutions  
Reginald Reinhardt  
Trustee Crystal K. Rose<sup>75, 5</sup> and  
Richard S. Towill  
Glenn and Lytle<sup>74</sup> Takemoto  
Robert and Jane<sup>65</sup> Terry  
Towill Family Foundation  
Ulupono Initiative, LLC  
Ushijima Architects, Inc.  
Vaughn G. A. Vasconcellos<sup>71</sup>

## KA HUI UA LOKU \$5,000 – \$9,999

Anonymous  
AM Partners Inc  
Armstrong Builders, LLC  
Cades Schutte LLP  
Colliers International Hawaii  
Hiram and Trudi de Fries  
Fidelity Charitable Gift Fund  
Diane N. Gibb-Lahodny<sup>82</sup>  
Goodfellow Bros, LLC  
Hawaii AG and Culinary Alliance  
Hawaiian Electric  
Kamehameha Schools Association  
of Kauai  
Kamehameha Schools Student  
Activities - Maui Campus  
Kūki'o Golf and Beach Club, Inc.  
Layton Construction Company, LLC  
Drs. Andy and Natalie L.<sup>92</sup> Lee  
MD Restoration  
Nelson Wong<sup>87</sup> and M. Kāhealani  
Nae'ole-Wong<sup>87, 5</sup>  
Lauren Nahme<sup>5</sup>  
Odom Corporation  
Pacific Fleet Submarine Memorial  
Association  
Paradise Beverages  
Ponsar Valuation, LLC  
Pu'uhonua Society  
R. M. Towill Corporation  
The Ro Foundation  
Royal Contracting Company  
Securitas Security Services USA  
Sean K.<sup>89</sup> and Melissa A.K. Spencer  
Swinerton  
Mililani B. Trask<sup>69</sup>  
WCIT Architecture, Inc.  
Seena Wise<sup>101</sup> and David Wold  
Livingston "Jack" Wong, Jr.<sup>5</sup> and  
Kimi Oyama  
Cody K. Yancey<sup>106</sup>

## KA HUI UA NĀULU \$2,500 – \$4,999

Alan<sup>82</sup> and Carolyn<sup>82, 5</sup> Kēhaunani  
Abad  
David Ames<sup>5</sup>  
Robyn U. Au<sup>72</sup>  
Benevity Inc.  
Julie-Ann M. Cachola<sup>80</sup>  
Leinani Cachola<sup>91</sup>  
Central Pacific Bank  
Donna Ching<sup>73</sup> and Richard Leman  
Ronald A. Cox<sup>5</sup>  
Ferraro Choi And Associates Ltd  
Elizabeth Hokada  
Darrel<sup>5</sup> and Denise Hoke  
Kalino Foundation / Kalino, LLC  
Kamehameha Schools Class of 1982  
Kamehameha Schools Class of 1993  
Kealaiwikuamo'o KS staff  
Daniel<sup>71</sup> and Mervlyn<sup>73, †</sup> Kitashima  
Kyo-ya Hotels & Resorts  
Bobbie P. Lau<sup>84, 5</sup>  
Violet P. Lui-Frank<sup>61</sup>  
R. Kawika Makanani<sup>66</sup>  
Mauna Kea Beach Hotel  
Native Hawaiian Chamber of  
Commerce  
PBR Hawaii and Associates, Inc.  
Promotion Dynamics, LLC  
Ben<sup>5</sup> and Cindy Salazar  
Snyder Family Foundation  
Travis<sup>89</sup> and Joby<sup>89</sup> Tom  
Vanguard Charitable  
Warrior Printing, LLC  
Lisa K. Wisotzky  
WKF, Inc.  
Vivian<sup>5</sup> and Grant Yasunaga

## KA HUI KUĀUA \$1,000 – \$2,499

Anonymous (7)  
Benjamin<sup>73</sup> and Momi<sup>79</sup> Akana  
Keith Kalani Akana<sup>75</sup>  
Julian K. Ako<sup>61</sup>  
Edward C. Alexander<sup>61</sup>  
Melanie<sup>84</sup> and Kevin Allison  
Hilarie R. Alomar<sup>5</sup>  
Valerie M. Amby-Kamakeeaina<sup>94, 5</sup>  
Benjamin<sup>90</sup> and Patricia Ancheta  
Natalie Arrell<sup>5</sup>  
Michael<sup>66</sup> and Chu Cha Asam  
Pamela L. Asuega-Keawe<sup>5</sup>  
Violet W. Awana  
Bank of America Employee Giving  
Campaign  
Wyatt M. M. Bartlett<sup>12, 5</sup>  
Dr. Jmi Lilinoe Bassett Asam<sup>97</sup>  
Gaye K. K. Beamer  
Beer 'Ohana  
BMW of Honolulu  
Alyssa K. B. Braffith<sup>70, 5</sup>  
Randy Brandt<sup>59</sup>  
Dr. and Mrs. Lawrence Brede, Jr.<sup>61</sup>  
Bryce E. Uyehara, A.I.A, Inc.  
Zandin U. M. Burke<sup>12</sup>  
Fredrico Keakaokalani Cachola<sup>53, †</sup>  
Donna Jo Carter-Tani<sup>78</sup>  
Jason Chang  
Paula C. H. Chang<sup>73</sup>  
Dr. Sandra K. Chock-Eng<sup>66</sup>  
Duane<sup>72</sup>, Bette and Corinne<sup>97</sup> Chun  
Ian N. Chun<sup>95</sup>  
City and County of Honolulu -  
Division of Motor Vehicles  
Loy Cluney<sup>60</sup>  
Laurene Cockett  
Elizabeth Jane Culp<sup>78</sup>  
Ian-James K. Custino<sup>95, 5</sup>  
Datahouse Consulting, Inc.  
James<sup>70</sup> and Darlene Du Pont





Kelly Beth Dukelow<sup>5</sup>  
 Louise K. DuPont<sup>68</sup>  
 Eli Lilly and Company Foundation  
 Deborah and Fred<sup>88</sup> Erskine  
 Wendy Erskine<sup>5</sup>  
 William<sup>49</sup> and Judith Fernandez  
 Festival Management Corporation  
 William Kalani Fong<sup>91</sup>  
 Dr. Stan Fortuna, Jr. and Nancy  
 Fortuna  
 Alike<sup>94</sup> and Haunani<sup>79, 5</sup> Fujimoto  
 Raejean K. Gamiao<sup>95</sup>  
 Evan Golly<sup>5</sup>  
 Ronald and Hali<sup>56</sup> Goo  
 Halekulani Corporation  
 Brandon Hong<sup>02</sup>  
 Clayton H. Ing<sup>76</sup>  
 Leihulumahiepihaikealoaana<sup>ole</sup> I.  
 Irvine<sup>03</sup>  
 Jon T. Iwatani<sup>5</sup>  
 Jason<sup>00, 5</sup> and Jeannin<sup>5</sup> Jeremiah  
 The Kahala Hotel & Resort  
 Naomi L. Kahumoku-Ahuna<sup>82</sup>  
 Kamehameha Schools Class of 1954  
 Kamehameha Schools Class of 1970  
 Kamehameha Schools Class of 1990  
 Kamehameha Schools Class of 1991  
 Kamehameha Schools Class of 2028  
 Kamehameha Schools Kapālama  
 Student Activity Funds  
 Kamehameha Schools Maui Campus  
 Parent Teacher Student 'Ohana  
 John<sup>66</sup> and Charlene<sup>67</sup> Kapololu  
 Noah M. Kauhane<sup>90</sup>  
 John<sup>71</sup> and Suzette<sup>71</sup> Kaulukukui  
 Nālani Blane Kealaiki<sup>94, 5</sup> and William  
 Kealaiki<sup>94</sup>  
 Bruce and Lisanne<sup>82, 5</sup> Kekuewa

Curtis<sup>66</sup> and Rebecca Kekuna  
 Sydney<sup>69</sup> and Kawehi<sup>76</sup>  
 Keli<sup>5</sup>ipule<sup>ole</sup>  
 Kia Enterprises, LLC  
 KPRSHawaii Construction, Inc.  
 Kuoha Culinary  
 Alison L. Leary<sup>5</sup>  
 Douglas K. C. Lee<sup>84</sup>  
 Leianne K. Lee Loy<sup>82</sup>  
 Herbert Levy  
 Kim Lorch and Diana Malotte  
 LPL Financial  
 S. Pono<sup>79</sup> and Danene Lunn  
 Aileen G. Magno<sup>58</sup>  
 Drs. Emanuel Drechsel and  
 Teresa<sup>71</sup> Makuakane-Drechsel  
 Manuheali<sup>5</sup> Inc.  
 Martin P. Martinson<sup>68</sup>  
 Elton T. Masaki<sup>5</sup>  
 Roy Masaki  
 E. Ann McBernie<sup>54</sup>  
 Louis<sup>62</sup> and Anna Marie Medeiros  
 Mid-Pacific Country Club  
 Trustee Elliot K. Mills<sup>5</sup>  
 Myron Mitsuyasu  
 Harolyn K.<sup>75</sup> and Richard M.  
 Morgenstein  
 William L. M. Nary Jr.<sup>78</sup>  
 Jason O. Navarro<sup>89</sup>  
 Trustee Robert<sup>91, 5</sup> and Joyce  
 Nobriga  
 Lawrence<sup>87, 5</sup> and Heather<sup>92, 5</sup>  
 Park  
 Michael Parker  
 Parker Smith and Feek / King  
 and Neel  
 Pearl Country Club

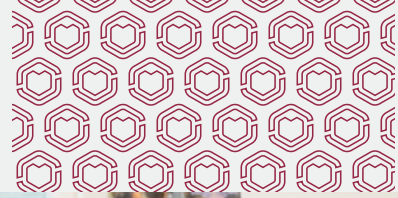
Pearl Harbor Hawaiian Civic Club  
 Melanie Yin Pecsok<sup>75</sup>  
 Diane J. Plotts  
 The Queen's Health System  
 Research Corporation of the  
 University of Hawaii  
 Dana K. Sato<sup>5</sup>  
 Schwab Charitable Fund  
 Scott W. H. Seu<sup>83</sup>  
 Shell Oil Company Foundation  
 C/O CyberGrants  
 Sherrilyn Shephard  
 Carrie E. Shoda-Sutherland<sup>5</sup>  
 Kamika Smith<sup>79</sup>  
 Stone's Towing and Recovery, Inc.  
 Frank and Sharen Sylva  
 Shariann Sylva  
 Henry and Dancine<sup>79, 5</sup> Takahashi  
 Walter<sup>84, 5</sup> and Tammy  
 Thoemmes, III  
 Wallace K. Tom<sup>73</sup>  
 Bran-Dee M.K. Torres<sup>93, 5</sup>  
 Daniel<sup>05, 5</sup> and Kristin Truong  
 Creighton T. H. Tuzon<sup>89</sup>  
 Uchiyama Erskine Architects  
 University of Hawaii Foundation  
 Linda Victor<sup>58</sup>  
 VKN Services INC.  
 Waiolani Elua Inc.  
 The Westin Hapuna Beach Resort  
 Rick and Noelani<sup>66</sup> Whittington  
 Trustee Lance<sup>83, 5</sup> and Marcy  
 Wilhelm  
 Keevin Kawai Winchester<sup>05</sup>  
 Georgia H. Wong<sup>70</sup>  
 Benjamin<sup>49</sup> and Muriel<sup>50, 1</sup> Yin  
 John Yunits

## KA HUI KO'IAWE

\$500 – \$999

Anonymous (11)  
 Vladimir Abadzhiev<sup>5</sup>  
 Melani G. Abihai<sup>67</sup>  
 Terry-Lynn K. Adams-Kaonohi<sup>91, 5</sup>  
 Aiona Car Sales  
 KeAupuni<sup>05</sup> and Susan Akina  
 'Alohilani Resort Waikiki Beach  
 American Heart Association, Inc.  
 American Online Giving  
 Foundation  
 Muriel A. Anderson<sup>62</sup>  
 Rachele L. Andrade<sup>5</sup>  
 Raynard L. Apana  
 Phillip M. Arnold<sup>63</sup>  
 Kawena<sup>95</sup> and Keoko<sup>91</sup> Beupre  
 William<sup>66</sup> and Phyllis<sup>66</sup> Beimes, III  
 Ashlynn<sup>5</sup> and Duke Book  
 Bright Funds  
 Courtney M. Brown  
 Dr. Ross H. Chang<sup>74</sup>  
 Jared K. Ching<sup>90</sup>  
 Roland and Cheryl Chong-  
 Ariola<sup>72</sup>  
 Dr. Taran<sup>95, 5</sup> and Nizhoni Chun  
 Dr. and Mrs. Francis K. Chun<sup>79</sup>  
 Phoebe Counts Brusco<sup>58</sup>  
 County of Hawaii Department of  
 Finance  
 Stanley C. Dahlin<sup>61</sup>  
 Marguerite H. Daysos<sup>5</sup>  
 Shelby K. DeCosta<sup>99</sup>  
 Buddy Dees  
 Patricia Dees  
 Thomas Ka'eo Duarte<sup>5</sup>  
 Carisa L. K. Duffy<sup>92</sup>  
 John and Darcy Jean<sup>5</sup> Ebanes  
 Judy Burge Enszer<sup>65</sup>  
 Jackie Mahi Erickson<sup>58</sup>  
 Blaine and Jean<sup>5</sup> Fergstrom  
 Rinda J. Fernandes<sup>66</sup>  
 Vernael K. Fernandez<sup>70</sup>  
 Marcy E. Fleming<sup>5</sup>  
 Tatiana K. Fox<sup>00, 5</sup>  
 Leah K. Freitas<sup>01</sup>  
 Leinaala Freitas  
 Mary Jo Freshley  
 Vernon Funn, Jr.<sup>68</sup>  
 Kenneth K. Furukawa<sup>73</sup>  
 Gorden Gates<sup>78</sup>  
 Jerry and Kehau<sup>94, 5</sup> Isara Glassco  
 Trustee J. Noelani Goodyear-  
 Ka'opua, PhD<sup>92, 5</sup>  
 Christine Guo<sup>5</sup>  
 Hawaii Community Foundation





Hawaii Science Teachers Association  
 Shane Herrod  
 Amona K. Ho  
 Marilyn Hopkins-Wills  
 Healani Huch<sup>66</sup>  
 Island Insurance Foundation  
 Ross and Nikki<sup>15</sup> Iwata  
 Cathy Manu Kaiama<sup>78</sup>  
 Nathan L. Kalama<sup>66,1</sup>  
 Anthony<sup>65</sup> and Diana Kam  
 Jeanelle L. Y. L. Kam<sup>90</sup>  
 Napualokelani Kamakele<sup>95</sup>  
 Kamehameha Schools Class of 1977  
 Kamehameha Schools Kapālama Middle School  
 Kamehameha Schools Preschool He'eia and Kikiwelawela  
 Leanne Kami<sup>5</sup>  
 Andrea L. Kanno<sup>5</sup>  
 Bernard<sup>73</sup> and Holly Kaopuiki  
 William K. Kaopuiki<sup>63</sup>  
 Kahekili Kealoha  
 Genelynn Waialae Kelley<sup>5</sup>  
 Kevin K. Kidder<sup>95</sup>  
 Shelli Kim<sup>90,5</sup>  
 The Kohala Center  
 Kokua Kona, LLC  
 Ian P. K. S. Kosora<sup>91</sup>  
 Kupa'aina o Kuli'ou'ou  
 Frances Laikona<sup>5</sup>  
 Craig K. Lock<sup>66</sup>  
 Kristina K. Lowe<sup>91</sup>  
 Pono K. Ma'a<sup>82,5</sup>  
 Tiyanni M. Mahi<sup>17</sup>  
 Naomi Mahiko<sup>63</sup>  
 Joseph N. Maluo<sup>55</sup>  
 Patti Matsumoto<sup>5</sup>  
 Mahealani Matsuzaki<sup>86,5</sup>  
 Charles Matthews  
 Maui Tropical Plantation  
 Tamia M. McKeague<sup>5</sup>  
 Robert<sup>5</sup> and Shawna<sup>5</sup> Medeiros  
 Merrill Lynch, Pierce, Fenner and Smith Inc.  
 Susan M. Moss<sup>73</sup>  
 Maile E. Mundon<sup>89,5</sup>  
 Gabriel L. Naeole<sup>85,5</sup>  
 Euphemia Nagashima  
 Cara Nakamura<sup>5</sup>  
 Lewis Naumchik<sup>77</sup>  
 Benjamin and GERALYN Nihipali, Jr.  
 Nathanael C. Oda<sup>03</sup>  
 Ola Brew Co  
 Ryan Omine  
 Larry and Gale Park  
 PayPal Giving Fund  
 Photography by Saint, LLC  
 Col. Michael E. Rawlins Sr.<sup>63</sup>  
 Ronald N. S. Ho and Associates, Inc.

Michael Saines<sup>5</sup>  
 Coryn Sakamoto<sup>5</sup>  
 Salesforce  
 Gwendolyn K. Sanders-Kaahanui<sup>63</sup>  
 Dennis Shak<sup>76</sup>  
 Race V. K. Skelton<sup>98</sup>  
 Southwest Airlines Company  
 Jeannette M. T. Sunn<sup>98,5</sup>  
 Randolph<sup>66</sup> and Debora Tandal  
 Maleko L. P. Taylor<sup>00</sup>  
 Bobbie L. Tom<sup>79,5</sup>  
 Melvin and Linda Tom  
 C. Buffy Trugillo<sup>91,5</sup> and William Trugillo  
 Cakaunivalu Tulewa-Gibbs<sup>5</sup>  
 Keikilani R. Uehara<sup>95,5</sup>  
 United Way of the Columbia-Willamette  
 Joseph Uno  
 Chucky<sup>60</sup> and Barbara von Arnswaldt  
 Roy C. Wilson, Jr.<sup>66</sup>  
 Calvin<sup>74</sup> and Eleanor<sup>74</sup> Young

## KA HUI NOE

\$250 – \$499

Anonymous (5)  
 Gail M. A. Abrena-Agas<sup>00</sup>  
 Allyson Agcaoili<sup>5</sup>  
 John and Sharrie<sup>63</sup> Ah Chick, Jr.  
 Liz<sup>5</sup> and Kauhi Ahana<sup>93</sup>  
 Cheryl<sup>93,5</sup> Kealohilani Souza  
 Ahuna and Denver<sup>92</sup> Alika Souza  
 Jonah Hau'oli Akaka<sup>5</sup>  
 Pualani S. Akaka<sup>66</sup>  
 Puni Akana<sup>64</sup>  
 Rick Akau<sup>73</sup> and Sabrina Toma  
 Thomas M. Akina<sup>18</sup>  
 Natalie M. Andrade<sup>95</sup>  
 Lynn Apo<sup>64</sup> and Scotty Bowman<sup>52</sup>  
 Yuuko Arikawa-Cross<sup>95</sup>  
 Raine M. A. Arndt-Couch<sup>01</sup>  
 Pakalani J. Bello<sup>97,5</sup>  
 Leicey-Tiara K. Bickford<sup>95</sup>  
 Big Island Tree Service, Inc.  
 Bryant "Kamuela" Binkie<sup>5</sup>  
 Wesley Blackstad<sup>00</sup>  
 Marsha<sup>70</sup> and Bob Bolson  
 Kenten S. Boro<sup>14</sup>  
 Ella L. and Carlton E. Brooks  
 Myron Brumaghim<sup>62</sup>  
 Tanya-Ann<sup>85</sup> and Andrew Burian  
 Kevin<sup>73</sup> and Noelani<sup>75</sup> Burkett



Vann and Dolores<sup>65</sup> Camacho  
 Kathleen Haunani Campbell, AuD.<sup>69</sup>  
 Martha Carrasquillo<sup>5</sup>  
 Evangeline J. Catipon<sup>5</sup>  
 Geraldine Chang<sup>63</sup>  
 Mark<sup>77</sup> and Maile<sup>5</sup> Cluney  
 Kevin Cockett<sup>84,5</sup>  
 Alex Cody  
 Cookie Corner Hawaii  
 Alan<sup>64</sup> and Shirley Costa  
 Millicent A. Cruz<sup>83,5</sup>  
 Ben Davison  
 Wayne De Luz  
 Pachale K. DeGuzman<sup>95</sup>  
 Kehaulani E. Delostrico<sup>82,5</sup>  
 Bryan L. DeVore<sup>5</sup>  
 Moya K. Donahue<sup>80,5</sup>  
 Amber Driscoll<sup>5</sup>  
 Joseph A. Duax<sup>5</sup>  
 Lei-Ann M.<sup>73</sup> and Ronald M. Durant  
 Kirk<sup>70</sup> L. Durante and Phyllis<sup>73</sup> T. Campbell Durante  
 Hualani J. Fernandes<sup>57</sup>  
 Randie K.<sup>78,5</sup> and Jamie M.<sup>78,5</sup> Fong  
 Bernadette<sup>85</sup> and Kawika<sup>85</sup> Freitas  
 Frontstream  
 Allan and Gail Fujimoto  
 Kristy L. Genuario<sup>95</sup>  
 Darrell M. Hamamura<sup>5</sup>  
 Priscilla K. L. H. Hanna<sup>65</sup>  
 Chelsey K. Harbottle<sup>02</sup>  
 James K. Hardy<sup>04</sup>  
 Van C. Hare, IV<sup>86</sup>  
 Reginald and Kanani Young<sup>90,5</sup> Harris  
 Jay Hartwell  
 Hataishi 'Ohana  
 Hawaii Shima Judo Kyokai  
 Racine Hee<sup>89</sup>

Tanya Hewahewa<sup>86,5</sup>  
 Doreen Ho<sup>80</sup>  
 Kenneth E. Ho  
 Mr. Eugene G. Ho  
 Koreti Vahineleni Ili<sup>5</sup>  
 J. Douglas K. Ing<sup>62,5</sup>  
 Island Growth  
 Coleen I. Ka'anehe<sup>78,5</sup>  
 Alison F. Kajiwaru<sup>5</sup>  
 Elwood G. Kalahiki<sup>67</sup>  
 Edwina M. Kalahiki-Mundo<sup>72</sup>  
 Shea-Lah K. Kama<sup>5</sup>  
 Michelle A.<sup>5</sup> and Isaiah K. Kamali'i-Ligsay<sup>00</sup>  
 Kamehameha Schools Commercial Real Estate Division  
 Kamehameha Schools Office of the CEO  
 Duke and Tracy<sup>5</sup> Kaneakua  
 M. Malia Kau<sup>91</sup>  
 Thomas K. Kaulukukui<sup>63</sup>  
 Salote L. Kauvaka<sup>5</sup>  
 James Keller  
 Tracy<sup>78</sup> and Debbi-Jaye<sup>80</sup> Keolanui  
 Ronelle K. Kopp<sup>75</sup>  
 Dennis Kuewa<sup>68</sup>  
 Robert Kurlansky<sup>68</sup>  
 Brad M. Kusunoki<sup>01</sup>  
 Nadine T. Lagaso<sup>5</sup>  
 Francis and Lee Choo Lau  
 'Ohana of L. Kaipoheha Moses Sr.<sup>79</sup>  
 Kainoa J. Lincoln<sup>95</sup>  
 Delia K. Long<sup>89</sup>  
 Melanie K. Long<sup>83</sup>  
 Bettina Lum<sup>5</sup>  
 Geraldine Lund<sup>73</sup>  
 Yann Lussiez<sup>5</sup>  
 Kelli K. Lyau<sup>5</sup>  
 Herbert Mahelona<sup>85,5</sup>  
 Maria Tisha Makio  
 Gail Makuakane-Lundin<sup>73</sup>



Leah K. Mariani<sup>93, 5</sup>  
 Carmen L. Matsuura<sup>5</sup>  
 Shannon K. K. McCandless<sup>03</sup>  
 Jamy<sup>91</sup> and Josh McGee  
 Michelle L. Medeiros<sup>87, 5</sup>  
 Darin Mijo<sup>5</sup>  
 Linda N. Mitsunaga<sup>77</sup>  
 Ivey K. Mitsuyuki<sup>74</sup>  
 Jessie Moniz<sup>00</sup>  
 Kathleen Moniz, M.D.<sup>73</sup>  
 Sandra P. Moriguchi<sup>78</sup>  
 David<sup>71</sup> and Elaine<sup>71</sup> Mortensen  
 William<sup>52</sup> and Betty Mundon  
 Dianne A. Muraoka<sup>5</sup>  
 Stacie Nakamura<sup>5</sup> and Kevin  
 Simon  
 Awapuhimele P. H. Napoleon-  
 O'Brien<sup>98, 5</sup>  
 Michael Niethammer  
 Leanne A. Nikaido<sup>5</sup>  
 Paul Kim<sup>70</sup> and Linda  
 Nishimura<sup>70</sup>  
 Andrea P. Oka<sup>86, 5</sup>  
 Lizbeth Ann Olsten<sup>66</sup>  
 Carol-Ann M. Ota<sup>5</sup>  
 J. Maili Pa'alani<sup>76</sup>  
 Rhonda W. Paleka<sup>5</sup>  
 Lesley Ann N. Pico-Lilio<sup>5</sup>  
 Cindi Pila<sup>90, 5</sup>  
 Prince Waikiki  
 Gabriel<sup>63</sup> and Evelyn Pua'a, Jr.  
 Paula J. Purdy<sup>5</sup>  
 Sheleen E. Quisquirin<sup>95, 5</sup>  
 Sarah<sup>5</sup> and Thomas Razee  
 Jon Rickard<sup>63</sup>  
 Stacy Rosehill-Baker<sup>5</sup>  
 Rochelle Santiago<sup>5</sup>  
 Braeden K. Santiago<sup>11</sup>  
 Jame K. Schaedel<sup>01</sup>  
 Matthew R. Sgan  
 James and Kimlynn Slagel  
 Alexandres-Joan K.<sup>09, 5</sup> and  
 Cody<sup>03</sup> Souza  
 Darmaine N. Stant<sup>5</sup>  
 Karen L. F. Stine<sup>75</sup>  
 Mari Stone  
 Kapiolani M. Street<sup>07</sup>  
 Nikki K. Sutton<sup>97</sup>  
 Brian Takemura<sup>5</sup>  
 Barbara Taum  
 Ruth N. Teanio<sup>5</sup>  
 Puananiaona P. Thoene<sup>03</sup>  
 Lan Tu<sup>5</sup>  
 Daniel Vermillion  
 Diane C. Victor<sup>5</sup>  
 Charles K. Wahineho'okae, Jr.<sup>66</sup>  
 Sandee Nohea Walker<sup>96, 5</sup>  
 Andrew Watson<sup>76</sup>  
 Heather L. Wong<sup>98</sup>  
 Cheryl Ann Young

## KA HUI 'OHU

\$100 – \$249

Anonymous (37)  
 808 Backflow Testing LLC  
 Mitchell T. Abad<sup>83, 5</sup>  
 Phil<sup>90, 5</sup> and Desiree<sup>90</sup> Aganus  
 C. Kuni Agard<sup>95</sup>  
 William K. Ahina, Jr.<sup>73</sup>  
 Gailyn A. Ahuna-Lum<sup>5</sup>  
 Racquel K. Aikala<sup>5</sup>  
 Carl K. Akai<sup>84</sup>  
 Zeoma T. Akau<sup>5</sup>  
 Patricia Ako<sup>61</sup>  
 David Alama, Jr.<sup>62</sup>  
 Matthew<sup>89</sup> and Karen<sup>91, 5</sup>  
 Alamida  
 Jason Alexander<sup>5</sup>  
 Rev. Clifford Kealahou Alike<sup>67</sup>  
 Lindsey Allen<sup>80</sup>  
 Laurie L. Alvaro<sup>70</sup>  
 Paulyne K. Anakalea<sup>63</sup>  
 Ralph K. Aona  
 Erwin and Rochelle<sup>73</sup> Arquette,  
 Jr.  
 Kathryn H. Au  
 Diane O'Riley Azevedo<sup>77</sup>  
 Kimo<sup>71</sup> and Mary-Elizabeth<sup>72</sup>  
 Bacon  
 Noelani T. Balai<sup>70</sup>  
 David Banks  
 Kevin L. L. Baptist<sup>70</sup>  
 Loretta Baptist  
 Leimaile K. Barrett<sup>11, 5</sup>  
 Benjamin and Charlotte Bautista  
 Daniel Bayne<sup>73</sup>  
 Susan Becker<sup>73</sup>  
 Tricia Bell<sup>5</sup>  
 Caroline K. Belsom<sup>66</sup>  
 Dr. Carl Kalani Beyer<sup>64</sup>  
 Alohi Bikle<sup>5</sup>  
 Noela Bishaw<sup>68</sup>  
 William<sup>62</sup> and Rowena<sup>62</sup> Blaisdell  
 Dylan K. Blane<sup>18</sup>  
 Sarah K. Blane<sup>99</sup>  
 James<sup>66</sup> and Ramune Blevins, Jr.  
 John<sup>75</sup> and Karen Brandt  
 Kalani Bright<sup>5</sup>  
 Suzanne G. Brinkman<sup>5</sup>  
 Jeffery<sup>76</sup> and Kaleilehua Bruchal  
 H. David<sup>63</sup> and Marilyn Burge  
 Paula Ann Burgess-Tauala<sup>5</sup>  
 Gayle Burgher<sup>5</sup>  
 Jan K. Burns<sup>79</sup>  
 Crystal Busey<sup>5</sup>  
 Timothy and Pat<sup>73</sup> Kamalani  
 Cafferty Hurley  
 Deanna Calderone-Kaufman<sup>85</sup>

Jocelyn J. Calma<sup>5</sup>  
 Winfred<sup>76</sup> and Cindy<sup>76, 5</sup> Cameron  
 David and Aldrena<sup>73</sup> Cantrell  
 John Cardone  
 Andrew<sup>63</sup> and Darlene Carlmark  
 Jennifer I. M. Chalaire<sup>97</sup>  
 Bradley Chang<sup>83</sup> and Lee Henry-  
 Chang<sup>83</sup>  
 Douglas<sup>78</sup> and Ruth<sup>77</sup> Chang  
 Ana and Ben Char  
 Paula W. Chong<sup>5</sup>  
 Charlene N. Christenson<sup>78</sup>  
 Dr. Michael<sup>61</sup> J. and Bina<sup>63</sup> Chun  
 George Churchill<sup>5</sup>  
 William and Rowena<sup>63</sup> Cole  
 Kimberly H. Coleman<sup>03, 5</sup>  
 Michael and Kaleonani Coleman  
 County of Kauai Department of  
 Finance  
 Herb<sup>68</sup> and Dee<sup>73</sup> Coyle  
 Robert Davis<sup>60</sup>  
 Sheila Dean<sup>5</sup>  
 Layla J. Dedrick<sup>88</sup>  
 Mary Cockett DeLapp<sup>5</sup>  
 Scott Delman  
 Samuel and Chanel Desilva<sup>93</sup>  
 Frances L. Dinnan<sup>73</sup>  
 Nani Dudoit<sup>78, 5</sup>  
 Eddie Ebert  
 Shannon Endo<sup>5</sup>  
 Mae Enfield  
 Lana Gaye Ernesto<sup>63</sup>  
 Hailama<sup>89, 5</sup> and Elena<sup>93</sup> Farden  
 Madelyn H. Fern<sup>63</sup>  
 Maverick Fernandes<sup>5</sup>  
 Cynthia R. Fernandez<sup>5</sup>  
 Kimokeo N. Ferreira<sup>02</sup>  
 Merle Fischlowitz, Ph.D.  
 Carlene F. Flores<sup>87, 5</sup>  
 Adele S. Flores<sup>5</sup>  
 Erica H. Fontaine<sup>86</sup>  
 Bradley and Jennifer Fortuna  
 Craig and Breanne Fortuna  
 Joel and Carla Fortuna  
 Moanikeala Furuta<sup>5</sup>  
 Kyle Galdeira<sup>03, 5</sup>  
 Nafeesah Garcia  
 Daniel Gluck  
 Dr. Farrah-Marie K. Gomes<sup>94</sup>  
 Puanani Mundon Gonsalves<sup>54</sup>  
 Zachary Gonzales  
 Ryan<sup>96, 5</sup> and Keiko<sup>98</sup> Gonzalez  
 Bryan K. Goo<sup>78</sup>  
 Rosanne Goo  
 Kathy Uilani Goods<sup>92</sup>  
 Dr. Brian Goodyear  
 Gordon Grossmann and Carol  
 Twilt  
 Roy and Shirley<sup>78</sup> Gurat  
 Rochelle N. L. Guthrie<sup>87, 5</sup>

Joseph A. Hamel<sup>5</sup>  
 Ormond Hammond  
 Lori A. Hanaike<sup>73</sup>  
 Moana M. Hanawahine<sup>90, 5</sup>  
 Neil and Mariane Hannahs<sup>69</sup>  
 Ross Hardy  
 Niaulani S. Harris<sup>70</sup>  
 Junedale U. Hashimoto<sup>73</sup>  
 Keri K. Hashitate<sup>5</sup>  
 Hawaii Business Magazine  
 Christine Pi'ilani Hayes  
 Edmund H. K. Hee<sup>63</sup>  
 George L. Heiligman<sup>66</sup>  
 Jerusha E. K. Hew Len<sup>93</sup>  
 Chris<sup>63</sup> and Gwen Hilbus  
 Erma K. Hoffman<sup>73</sup>  
 Stephen<sup>73</sup> and Leonora Holck  
 John Holeyfield  
 Todd Honnaka<sup>5</sup>  
 Paul W. Horner<sup>73</sup>  
 Liezl Houglum<sup>5</sup>  
 Dana K. Huddy<sup>5</sup>  
 Daniel Hughes<sup>5</sup>  
 James M. Hussey<sup>63</sup>  
 Leslie and Wendy Hutchins  
 Ashley K. Iaea<sup>03, 5</sup>  
 Stacey A. Imamura<sup>5</sup>  
 Kevin H. Imanaka  
 Darrell<sup>70</sup> and Maryellen Ing  
 Charlene D. Iokia<sup>78</sup>  
 James T. Itamura<sup>73</sup>  
 Gary K. Jay<sup>73</sup>  
 Walter<sup>63</sup> and Deeann Joines  
 Chrissy Jones<sup>5</sup>  
 Harriet P. Jones<sup>63</sup>  
 Dr. Samuel Kamuela Kaahanui<sup>67</sup>  
 Becky K. Kaaihili<sup>53</sup>  
 Jay-R K. Kaawa<sup>5</sup>  
 Gwen P. Kaawaloa<sup>78</sup>  
 Kirstin A. Kahaloa<sup>01</sup>  
 Jerre Jean O. Kaikaina<sup>58</sup>  
 Calvin<sup>60</sup> and Linda Kaina  
 Ramona<sup>78</sup> and Stephen Kaiwi  
 Bonnie Kalalau<sup>75</sup>  
 Martina L. Kamaka, M.D.<sup>78</sup>  
 Kamehameha Schools Preschool  
 Kalihi-Palama  
 Daniel Kanekuni  
 Kris K. Kaopuiki<sup>90</sup>  
 William Kapaku<sup>73</sup>  
 Kapālama Security  
 Milton Burgess<sup>72</sup> and Danearle  
 Kapaona<sup>73</sup>  
 Michelle T. Kapule<sup>5</sup>  
 Earl<sup>5</sup> and Patricia Kawa'a  
 Byron<sup>5</sup> and Kelehua<sup>94</sup> Kawai  
 William T. Kay, Jr.<sup>68</sup>  
 Melissa L. Kehano<sup>94, 5</sup>  
 Kody Kekoa<sup>10</sup>  
 Lauren K. Kikukawa<sup>5</sup>



Darrell<sup>89, 5</sup> and Amy Kim  
 Kimie Miner Music  
 Be-Jay Kodama  
 Ken Koseki  
 Testa Ku<sup>66</sup>  
 Tim Kudo<sup>5</sup>  
 Michael<sup>85</sup> and Xann Maile<sup>84</sup>  
 Kuenzli  
 Pierce 'Ohana  
 Randy Kurohara  
 Leonard F. Keala Kwan, Jr.<sup>5</sup>  
 Shannon E. K. L. Ladd<sup>90</sup>  
 Justine Kaku Lafata<sup>91</sup>  
 Lawnie U. Lau<sup>89</sup>  
 Rose L. Lau<sup>86</sup>  
 Chris Laumauna<sup>85, 5</sup>  
 Edward and Joelle<sup>5</sup> Lee, Jr.<sup>87</sup>  
 William<sup>66</sup> and Joanne Lee  
 Leimalama Lee Loy  
 Winona M. Leone<sup>63</sup>  
 Jason<sup>88</sup> and Keahi<sup>89</sup> Leong and  
 'Ohana  
 Kathy K. S. Leong<sup>93</sup>  
 Lance Leong<sup>83, 1</sup> and Andrea K.  
 Hussey-Leong<sup>83</sup>  
 Donna M. Leu<sup>76</sup>  
 Nola M. Lewis<sup>83</sup>  
 Shannon P. Lillii  
 Gordon Liljenquist<sup>02</sup>  
 Sandra Lockhart  
 Gay K. Lorch  
 Naomi Losch<sup>63</sup>  
 Miriam P. Loui<sup>75</sup>  
 Julia N. Lowe<sup>94, 5</sup>  
 Chris Lum<sup>19</sup>  
 Felicia A. Lum  
 Jamie Lum<sup>80</sup>  
 Lathen<sup>77</sup> and Pat Lum  
 Mark E. MacInnis<sup>5</sup>  
 Tausaafi S. Maeva  
 D. Kalani Makahanaloa<sup>53</sup>  
 Moana Makaimoku<sup>93</sup>  
 Elsie K. Makekau<sup>81</sup>  
 Terry Ann Malterre<sup>75</sup>  
 Paulene Marcello<sup>5</sup>  
 Susan Lyman Marineau<sup>76</sup>  
 Charles and Maydean Martin<sup>78</sup>  
 Garrett Matsunami  
 Robert A. McClung, Jr.<sup>73</sup>  
 Deanna L. McFadden<sup>62</sup>  
 Kaleialoha Medeiros<sup>5</sup>  
 Michael K. Medeiros<sup>75</sup>  
 William<sup>63</sup> and Marsha<sup>67</sup> Meinel  
 Sheree A. Mendonsa<sup>5</sup>  
 Maile Miki<sup>09</sup>  
 Jamee M. Miller<sup>5</sup>  
 Eassie<sup>70</sup> and Juby<sup>73</sup> Miller  
 Kimie K. Miner<sup>03</sup>  
 Leighton Miyakawa  
 Abraham K. Mokunui, Jr.<sup>82</sup>

Elizabeth Moore<sup>61</sup>  
 Dayna C. K. Mortensen<sup>92</sup>  
 Melanie P. Mundon<sup>91, 5</sup>  
 My God... It's Roland Cazimero  
 LLC  
 Claudette P. Na'au'ao<sup>56</sup>  
 Jessica A. Nagato<sup>5</sup>  
 Erin Nanea Nahuina<sup>83, 5</sup>  
 Luana S. Nakano<sup>66</sup>  
 Maile Naleieha<sup>5</sup>  
 Sarge<sup>62</sup> and Pam Napuunoa  
 Ryan Ng<sup>5</sup>  
 Kanealii<sup>5</sup> and Jacqueline Ng-  
 Osorio<sup>94</sup>  
 Courtney A. Nichols<sup>5</sup>  
 Lois Nishikawa<sup>5</sup>  
 Mae C. Nishimura<sup>5</sup>  
 Claudine Nishimura<sup>91</sup>  
 Skyler and Kelly Nishimura  
 Kapohauolaokalanikiakia Noa<sup>5</sup>  
 Nohopapa Hawaii, LLC  
 Cory M. Nojima<sup>75</sup>  
 N. Cookie Numazu<sup>5</sup>  
 Elaine A. Nu'uhiwa<sup>5</sup>  
 Brandon K. Bunag<sup>98</sup> and Sarah  
 J. Oda<sup>05</sup>  
 Linda Oda  
 Kamri K. Oguma<sup>12</sup>  
 Katrina-Ann R. Oliveira<sup>92</sup>  
 Michael Oliver<sup>5</sup>  
 Sabrina K. Ongos<sup>5</sup>  
 Joshua-Thad M. Oshiro<sup>05</sup>  
 Nathan O. Owens<sup>5</sup>  
 Leland K. Ozawa  
 V.L. and Joslyn<sup>66</sup> Packett  
 Harrison Pagan<sup>67</sup>  
 Claire M. Paishon<sup>54</sup>  
 Phillip S. Pale<sup>5</sup>  
 Elizabeth H. Pa-Nakea<sup>73</sup>  
 Aileen K. Pane'e<sup>60</sup>  
 Katherine Lokelani Patrick<sup>72, 5</sup>  
 Stacia<sup>73</sup> and Mark Peleholani  
 Sydney H. K. Perreira<sup>5</sup>  
 Barbara B. Perry<sup>63, 5</sup>  
 Dr. Paul K. Pestana<sup>70</sup>  
 Maggie Phan<sup>5</sup>  
 Elissa M. Pickard<sup>82</sup>  
 Uilani A. Piena<sup>73</sup>  
 Randiann Porras-Tang  
 Jamie K. U. Prem<sup>05</sup>  
 Stefan E. Press<sup>5</sup>  
 Wanda Pua-Kaipou<sup>77</sup>  
 William K. Puchert<sup>75</sup>  
 Emily Luana Pu'u<sup>94, 5</sup>  
 Treva K. Ranadey<sup>00</sup>  
 Carmen Rawls  
 Patrick<sup>72</sup> and Vivian Richardson  
 Rachel<sup>61</sup> and Joseph  
 Richardson-Caproni  
 Juliet L. Robinson<sup>92</sup>

Judy Rohrer  
 Troy<sup>88</sup> and Vanessa Rosenbush  
 Harriet E. K. Roxburgh<sup>63</sup>  
 Ruane 'Ohana  
 Margaret Christian Sadowski<sup>63</sup>  
 Sara Saffery<sup>5</sup>  
 Michele P. Sales<sup>93</sup>  
 Ken and Tina Salva Cruz  
 Thomas S. Santos III<sup>92, 5</sup>  
 Terri Lyn K. Saragosa<sup>87, 5</sup>  
 Michelle N. K. Sasaoka<sup>84, 5</sup>  
 Lydia L. Sato<sup>63</sup>  
 Kathleen P. Schwartze<sup>81</sup>  
 Wilhelmina Serrao<sup>5</sup>  
 Pauline Shannon<sup>5</sup>  
 Kathlyn S. Shelby  
 Glenda A. Shibata<sup>73</sup>  
 Glenn Shigetomi<sup>5</sup>  
 Sarah Shim<sup>5</sup>  
 Robbie Ann K. Shimose<sup>5</sup>  
 Fenner-Marie Shupe<sup>63</sup>  
 Sigrid Southworth  
 Thalia K. Souza<sup>73</sup>  
 Jacqueline Sovde<sup>5</sup>  
 Harriet Spencer  
 Helene L. Spencer<sup>73</sup>  
 Therese C. Staszko<sup>65</sup>  
 Melissa Stewart Rodrigues<sup>97, 5</sup>  
 Candace M. Tabuchi<sup>78</sup>  
 Hayden H. N. D. Takahashi<sup>14</sup>  
 Michelle N. Takai<sup>5</sup>  
 Malcolm K. K. Tam<sup>61</sup>  
 Solomon<sup>71</sup> and Sharon  
 Tamanaha  
 Michael and Vivien<sup>67</sup> Tamashiro  
 Jan Tanaka<sup>5</sup>  
 Target Corporation - C/O  
 CyberGrants, LLC  
 Wendy Tatsuno  
 Keani Taylor<sup>61, †</sup>  
 Michael and Elizabeth Terhorst  
 Robyn L. Titcomb<sup>91</sup>  
 Maj. David A. Tom<sup>73</sup>  
 Tomczyk 'Ohana

Jodie Y. W. Toyota<sup>85, 5</sup>  
 Ronald Tran  
 Amber Morgan Tupou<sup>96</sup>  
 Beryl<sup>73</sup> and Jon Tyau  
 Colleen Uahinui<sup>76</sup>  
 Bradley J. Uy<sup>5</sup>  
 Phil K. Uyehara<sup>5</sup>  
 Kaulana<sup>5</sup> and Kanoe<sup>5</sup> Vares  
 Lenwood H. H. Vaspra<sup>63</sup>  
 Alike L. Victor<sup>81</sup>  
 Wayne and Phyllis<sup>73</sup> Vidinha  
 Bill<sup>71</sup> and Renae<sup>72</sup> Villa  
 Kawika A. Villa  
 William<sup>63</sup> and Patricia Von  
 Arnswaldt  
 Waihole Poi Factory  
 Chivas H. Wakuta<sup>03</sup>  
 Constance<sup>68</sup> and Mark  
 Warrington  
 Daun Watanabe  
 Joyce P. Weiscopef<sup>66</sup>  
 Kalani H. Wilmington<sup>76</sup>  
 Pualani J. Wilmington<sup>78</sup>  
 Kanoe A. Wilson<sup>91, 5</sup>  
 Shawndrea and Kawena Wise<sup>97</sup>  
 Natalie A. Wise-Aguilar<sup>82</sup>  
 Bernadine L. P. Wong<sup>81, 5</sup>  
 Bruce and Charmain Wong<sup>67</sup>  
 Harrison Wong<sup>73</sup>  
 Kara N. Wong Ramsey<sup>01</sup>  
 Summer L. P. Wong-Leong<sup>95</sup>  
 Ulalia Woodside  
 Trina Yagi<sup>5</sup>  
 Jerrellyn L. Yamada<sup>64</sup>  
 Alan and Daphne<sup>78</sup> Yamamoto  
 Leslie L. Yap<sup>99</sup>  
 Joylynn I. L. H. Yarbrough<sup>86</sup>  
 Karen Yasuhara<sup>5</sup>  
 Thomas Y. Yoshida<sup>5</sup>  
 Scott K. and Staci Yoshihara  
 Susan Eiko Yoshitomi<sup>5</sup>  
 Dennis H. W. Young<sup>70</sup>  
 Kelly W. K. Zane<sup>87</sup>  
 Marya Zoller<sup>73</sup>





# GIFTS MADE IN HONOR OR IN MEMORY

Phil G. Aganus<sup>90</sup>  
Deena Ahakuelo-Yamamoto<sup>71</sup>  
Raymond M. Ahana<sup>65, †</sup>  
Margaret Ka'onohiolaokalani  
Goodwin "Tita" Akana<sup>†</sup>  
Arlette Aki<sup>61</sup>  
Iris K. Akimoto  
Carl J. Alexander  
Jason J. Alexander  
Jared Alvarez<sup>11, †</sup>  
Georgiana Alvaro<sup>63, †</sup>  
Alva James Andrews<sup>†</sup>  
Adriana A. Apana  
Elizabeth K. Apo  
Shay W. Auerbach<sup>†</sup>  
Daniel K. Baker Jr.<sup>83</sup>  
Blaise A. Baldonado<sup>05, †</sup>  
Marjorie Barrett<sup>41, †</sup>  
Walter Barrett<sup>45, †</sup>  
Bryant K. Binkie  
Ann N. Bishaw<sup>68</sup>  
Ke Ali'i Pauahi  
Richard Kekuni Blaisdell, MD<sup>42, †</sup>  
Bismark K. Book<sup>56, †</sup>  
Kamaile D. Brown<sup>82, †</sup>  
Kathy Rose K. Brown  
Kau'i N. Burgess  
Ioane K. Burns<sup>93, †</sup>  
Jan K. Burns<sup>79</sup>  
Charles "Chuck/Doc" Burrows<sup>51, †</sup>  
Frederico Cachola<sup>53, †</sup>  
Shannon L. Cadell<sup>76</sup>  
David R. K. Campbell<sup>66, †</sup>  
Jason A. Campbell<sup>08, †</sup>  
Corinna L. Campos  
Pamai (Tomczyk) Cano<sup>84</sup>  
Geeno Carlone  
Mina Casey-Pang  
Roland Cazimero<sup>68, †</sup>  
Myrtle "Mickie" Ceberano<sup>61</sup>  
Pohaku & Ka'uiki  
Francis Joseph Chock<sup>40, †</sup>  
Dr. Clayton Chong<sup>72, †</sup>  
Leilani L. Chun<sup>37, †</sup>  
Joseph K. Contrades<sup>†</sup>  
Rose Na'auao Pelayo "Maka"  
Crabbe<sup>52, †</sup>  
Beatriz G. Croll  
Frances Ching Crowell<sup>46, †</sup>  
Kaiulani Blankenfeld Damaso<sup>76</sup>  
Kapalaiula de Silva<sup>01</sup>  
Lee Ann DeMello<sup>81, †</sup>  
Cynthia DeRosier

Luryier "Pop" Diamond<sup>†</sup>  
Mary Ann P. Dorsey<sup>68</sup>  
Daphne Ellis Cramer<sup>†</sup>  
Trina "Aolani" Esene<sup>98</sup>  
Hailama Farden<sup>89</sup>  
Sara Fieman  
Sarah L. Fong<sup>66, †</sup>  
Jamie Fong<sup>78</sup>  
Kathryn Forte  
Tatiana K. Fox<sup>00</sup>  
Rockne C. Freitas<sup>63, †</sup>  
Melissa Anne H. Fujimoto  
Robyn Fujimoto  
Yvonne Fukumoto  
Mikahala Keala Fuller Santiago<sup>†</sup>  
Rosemary M. Galdeira<sup>58</sup>  
Christopher K. Gilding  
David Kalani Goldstein<sup>70, †</sup>  
Dora O. Gomez<sup>27, †</sup>  
Cecilia Ann Piilani Goods-  
Fernandez<sup>93, †</sup>  
Nicholas Kau'ilokoikaika Franklin  
Guard<sup>05, †</sup>  
Ella Mae Hammerstrom<sup>52, †</sup>  
Moana M. Hanawahine<sup>90</sup>  
Patricia "Patty" Hanson  
Nancy Heiligman<sup>†</sup>  
Healiipukauikawekiu "Heali"  
Heine  
LaVerne Hercules  
Danielle "Puanani" Higa<sup>87</sup>  
Betty M. Hiram<sup>54, †</sup>  
Merry Cris Ho<sup>73, †</sup>  
Suzel L. Ho<sup>54, †</sup>  
Janelle A. Hokama  
Darrel R. Hoke  
Chriss Hopkins<sup>91</sup>  
Dana K. Huddy  
Kelly Ibara  
Jean K. Igawa  
Koreti V. Ili  
Shanell Ingano  
Kekaulike Quinton Ishikawa<sup>98, †</sup>  
Sachi Iwata<sup>15</sup>  
Tiana Iwata<sup>14</sup>  
Henry Jay<sup>47, †</sup>  
Jeannin Jeremiah  
Geraldine "Auntie Gerry"  
Johansen<sup>60, †</sup>  
Denise Kaaa<sup>84, †</sup>  
Dr. Samuel Kaahanui<sup>67</sup>  
Samuel Ka'awaloa<sup>47, †</sup>  
Liamson K. Kahana<sup>94</sup>  
Louis Kahanu<sup>48, †</sup>  
Joseph Waiwaiolo Kahiapo, Jr.<sup>71, †</sup>  
Kaohinani M. Kalama<sup>03, †</sup> & Kaulike  
Kalama<sup>†</sup>  
Kekoa Kaluhiwa<sup>94</sup>  
Israel "Iz" Kamakawiwo'ole<sup>†</sup>  
Shawna Kamanu

Kamehameha Schools Class of 1948  
Kamehameha Schools Class of 1966  
Kamehameha Schools Class of 1973  
Kamehameha Schools Class of 1974  
Kamehameha Schools Class of 1979  
Kamehameha Schools Class of 1989  
Kamehameha Schools Class of 1994  
Kamehameha Schools Hawai'i  
Campus Service Awardees  
Andrea L. Kanno  
William Kauahikaua<sup>57, †</sup>  
Elizabeth Kauka<sup>45, †</sup>  
Jeffrey A. Kay<sup>91, †</sup>  
William Kazmar<sup>†</sup>  
Quentin Kealoha<sup>04</sup>  
Curtis Kekoa, Sr.<sup>40, †</sup>  
Haley N. Kodama<sup>14</sup>  
Trey K. Kodama<sup>12</sup>  
Joy Kono  
Crystal Kua-Bikle<sup>81</sup>  
Stella Kutaka<sup>†</sup>  
Chris W. Kwock  
Montana A. S. K. Lagat<sup>22</sup>  
Teresa Kaleiopu Lau<sup>†</sup>  
Benedict Kalamaku Lee Loy  
Megan "Miala" Leong<sup>02</sup>  
Nala Liao  
David M. Lorch<sup>†</sup>  
Naomi N. Lorenzo  
Tyler Luke<sup>12</sup>  
Joann Lum<sup>72, †</sup>  
Michele Paiva Macanas<sup>84, †</sup>  
Maylyn A. Magno-Gomes  
Diedre T. Maika  
Edmond Mak  
Maluo 'Ohana  
Benjamin K. Pea-Manuel<sup>48, †</sup>  
Dan Cunningham Matthews, Jr.<sup>†</sup>  
Kimble H. McCann  
David "Kawika" McGuire<sup>91</sup>  
Patricia P. Moniz  
Robert Jerry Moore Jr.<sup>53, †</sup>  
Myles Kekoa Nagashima<sup>88</sup>  
Kealoha Simeona Nascimento<sup>68</sup>  
Leanne A. Nikaido  
Lois Nishikawa  
Elaine A. Nu'uhiwa  
Francis Emory Oliveira<sup>†</sup>  
Leilani Warriner Oliveira<sup>48, †</sup>  
Catherine Keonaona Sims Ozawa<sup>37, †</sup>  
Elizabeth Pa<sup>24, †</sup>  
Dennis Paahana<sup>†</sup>  
Jacob Pacarro<sup>97</sup>  
Harold "Melelani" Pang<sup>87</sup>  
Alfred K. Patten<sup>63, †</sup>  
Jennifer Pea  
Ronald G. Perry<sup>73, †</sup>  
Daryle Jean Pescaia<sup>55, †</sup>  
Pierce 'Ohana  
Raymond C. Poon

Patti Rabacal  
Roxanne Ramones  
Anthony J. Ramos<sup>58, †</sup>  
Maelani L. Ramos  
Minuet Kawaiaea Ratledge<sup>55</sup>  
Hope Rosenbush  
Kai Rosenbush  
B. Haunani Saifoloi  
Tahnee C. Sales  
M. Wai'ale'ale Sarsona  
Aurencio Seguritan  
Kamehameha Schools Service  
Awardees  
Laurie U. Seto<sup>77</sup>  
Pauline Shannon  
Pono Shim<sup>81, †</sup>  
Krystle M. Silva<sup>†</sup>  
Jonathan Spencer<sup>72, †</sup>  
Oswald Stender<sup>50, †</sup>  
Charles A.K. Stewart<sup>†</sup>  
Grant Y. Sumida  
Dancine J. Takahashi<sup>79</sup>  
Hayden H. Takahashi<sup>14</sup>  
Laura T. Takahashi  
Takahashi 'Ohana  
Michelle N. Takai  
Kenneth K. Tamanaha<sup>50, †</sup>  
Stephanie S. Tancayo<sup>94</sup>  
Remigius M. Taum<sup>54, †</sup>  
Alice H. Taum, Ph.D.  
Robert Tirrell<sup>51, †</sup>  
Lori Pi'ikea Tomczyk<sup>80</sup>  
Samuel Awaitua Tong<sup>72, †</sup>  
Bran-Dee Torres<sup>93</sup>  
Justin Toyofuku  
Haunani Kay Trask<sup>67, †</sup>  
Robert K. Tyson  
Tom Uesgui<sup>†</sup>  
Lehua M. Veincent  
Nikolas Venuti<sup>†</sup>  
Stanley K.P. Victor, Sr.<sup>†</sup>  
Kelly Vuikadavu  
Nelson Waiamau<sup>73, †</sup>  
Edward Wilmington<sup>49, †</sup>  
John S. Wilmington<sup>34, †</sup>  
Henry Cooper Wise<sup>†</sup>  
Allan D. L. Wong<sup>73, †</sup>  
Gordon M. K. Wong<sup>55, †</sup>  
James Ka'upena Wong Jr.<sup>47, †</sup>  
Edana Wong  
Neil Y. Yamamoto  
Karen Yasuhara  
Florence A. Yogi  
Michele M. Young<sup>95</sup>  
Maria Liza R. Yucoco



# 2022-2023 Pauahi Foundation Scholarship Recipients

*1982 Green Machine Scholarship*  
Mason Carvalho<sup>22</sup>

*2010 Legends Scholarship*  
Shaylynn Anderson-Agpaoa  
Zachary Quemado<sup>23</sup>

*2017 Great Whites Scholarship*  
Camille Slagle<sup>20</sup>

*Admiral Kihune Scholarship*  
Kamaoukealoha Beaudet<sup>23</sup>

*'Alihi Scholarship*  
Destiny Lum<sup>22</sup>  
Landon Choy<sup>23</sup>  
Ryan Lola<sup>23</sup>  
Stephanie Scoville<sup>16</sup>

*Ali'i Chang Scholarship*  
Aiponokamoku Valente

*Allen A. Bailey Scholarship*  
Brysha Balancio-Sadamara  
Haley Cantiberos<sup>15</sup>  
Jensen Codi Wills-Ching<sup>18</sup>

*Amona and Suzel Ho STEM Leaders Scholarship*  
Kylee-Ray Tactacan

*Anne H. Myers Scholarship*  
Kalaiakea Duncan<sup>23</sup>

*Ashley Meleana Joy Scholarship*  
Mikiala Maynard

*Benedict Kalamaku Lee Loy KS 1905 Endowed Scholarship*  
Megan Hoopai

*Bernice Leinani Kuakini Ahlo and Henry Keanu Ahlo Scholarship*  
Braden Wong<sup>23</sup>

*Blaise A. Kepo'okelaokakai Baldonado Scholarship*  
Carly Ibara

*Blossom Mossman Nary Scholarship*  
Stetson Ah Mook Sang-Frank<sup>23</sup>

*Bruce T. and Jackie Mahi Erickson Scholarship*  
Kaluhea Fay Dudoit<sup>20</sup>

*Charles "Chuck", Craig and Fred Rudolph Scholarship*  
Shaylynn Anderson-Agpaoa

*Charles Chuck Makanui Jr. Scholarship*  
Shayna Podlewski

*Charles Cockett 'Ohana Scholarship*  
Hiilei Hanohano<sup>20</sup>

*Charles P.M.K Burrows Hui Lama Science Scholarship*  
Hope Rosenbush<sup>23</sup>

*Charles Reed Bishop Scholarship*  
Iliana Keawe-Oliveira<sup>22</sup>  
Sean Serville<sup>22</sup>

*Charles S. Iwata, Jr. Memorial Annual Scholarship*  
Kaluhea Fay Dudoit<sup>20</sup>

*Choy-Kee 'Ohana Scholarship*  
Kapri Tulang-De Silva<sup>18</sup>

*Christine Alicata/Daisy Bell Memorial Scholarship*  
Sinjin Cho-Tupua<sup>23</sup>

*Class of 2020 Aloha 'Āina Scholarship*  
Parker Chang<sup>21</sup>

*Col. Curtis Kekoa KS'40 and Nenita Maldonado Kekoa Scholarship*  
Jasmin Monderen

*Dan and Rachel Mahi Educational Scholarship*  
Kyson James-Foree<sup>22</sup>

*Daniel Kahikina and Millie Akaka Scholarship*  
Liana Kanno

*David A. Mortensen KS'71 D.A.M. Scholarship*  
Chyanni Balogbog-Domingo

*David and Julia Desha Scholarship*  
Bryson Kau<sup>23</sup>

Elliott Markell<sup>17</sup>  
Eryn Nagaishi  
Hayley Gooman<sup>23</sup>  
Iiwileohoopoipookalani Pacarro

Jordan Walsh  
Kahiau Snyder<sup>22</sup>  
Kainani Wagner<sup>21</sup>  
Micah Mahuna<sup>23</sup>  
Taylor Soo<sup>23</sup>

*David Kalani Goldstein, KS'70 Scholarship*  
Poikeao Roback<sup>23</sup>

*David Kauweloā & E. Darlene Kaupu Scholarship*  
Xavier Ah Yo

*Denis Wong & Associates Scholarship*  
Briana Ortiz  
Cassidy Duquette<sup>23</sup>  
Dajon Lee Francisco  
Yurise Yamaguchi



*Desha-Mulholland Scholarship*  
Hayley Gooman<sup>23</sup>  
Kaede Lynn Saniatan<sup>23</sup>  
Luke Kahuhu<sup>23</sup>

*DeWitt Wallace Scholarship*  
Bryson Kau<sup>23</sup>  
Chancen Law<sup>23</sup>  
Koa Chang<sup>23</sup>  
Landon Choy<sup>23</sup>

*Dolly and Ross Wert Scholarship*  
Tehina Kahikina

*Dorothy Martin Scholarship*  
Emi Shigekane<sup>23</sup>

*Douglas and Sandra Akina Scholarship*  
Welina-Lani Carino<sup>23</sup>

*Douglas K.K. Chung Memorial Scholarship*  
Chavis Lee<sup>23</sup>  
Jake Lee<sup>23</sup>

*Dr. Lori Ann Kim Scholarship*  
Raquel Rocha<sup>22</sup>

*Dr. Pauline Frederick Scholarship*  
Courtney Mann<sup>23</sup>

*Dwayne “Nakila” Steele Scholarship*  
Liana Kanno

*Edward Lapsley/Ho’opa’a Mau Scholarship*  
Christian Low<sup>23</sup>

*Edwin Mahiai Copp Beamer Scholarship*  
Lily Ann Faamausili

*Edwin P. Murray Scholarship*  
Joseph Ahuna<sup>23</sup>  
Mailelailiulolaka Brown<sup>23</sup>

*Elaine “Dollie” Mortensen KS<sup>71</sup> Kaumuali’i Malama ‘Aina Scholarship*  
Iiwileohooipoipookalani Pacarro

*Eli D. Pane’e, Sr., and Aileen E. Pane’e I Mua Scholarship*  
Jordanna Takaki<sup>22</sup>

*Elizabeth Ku’ulei Bell Moloka’i Education Scholarship*  
Olapaholunape Duvauchelle

*Eric N. Jacobsen Memorial Scholarship*  
Pearl Bachiller<sup>21</sup>

*Flik Independent Schools Dining Scholarship*  
Jordyn Nishimura<sup>23</sup>  
Kilinoelehua Helm<sup>23</sup>  
Mckensen-Leigh Fuata<sup>23</sup>

*Floro and McCarthy Family “Big Blue and White K” Scholarship*  
Esther Kerr<sup>14</sup>  
Isaiah Crabbe<sup>23</sup>

*Francelia Stillwell Sportsmanship Scholarship*  
Mahealani Plunkett<sup>23</sup>

*Francis and Phyllis Chun Scholarship*  
Pearl Bachiller<sup>21</sup>

*Frank & Ruth Midkiff Scholarship*  
Brandon Sado<sup>23</sup>  
Jaiden Bettis<sup>23</sup>  
Jayden Alonzo-Estrada<sup>23</sup>  
Kilinoe Oliveira<sup>23</sup>  
Koa Chang<sup>23</sup>  
Taylor Aloy<sup>23</sup>

*Gail and Allan Fujimoto Scholarship*  
Jordan Walsh

*George Hi’ilani Mills Scholarship*  
Chaylea Tome<sup>19</sup>  
Hennessey Chan<sup>16</sup>  
Kylee-Ray Tactacan  
Melyssa Moderow  
Natalie Lau  
Rachel Kaneakua<sup>10</sup>

*George T. Kanalu Young Memorial Scholarship*  
Dawnelle Forsythe

*Gladys E. and Clifford T.F. Chun Scholarship*  
Majesty Kekahuna  
Sage Shimabukuro<sup>23</sup>

*Gladys Kamakakuokalani ‘Ainoa Brandt Scholarship*  
Jasmin Monderen  
Jensen Codi Wills-Ching<sup>18</sup>  
Kaya Camara  
Nalehuao Puna Donlin  
Nawaioluokealoha Makua<sup>15</sup>  
Santee Walker<sup>96</sup>

*Goldman Sachs/Matsuo Takabuki Commemorative Scholarship*  
Christina Kaleiwahea  
Jennifer Marie Carter  
Naomi Nihipali  
Zion Kaauwai<sup>19</sup>

*Harold Turney & Dorothy Gillett Music Scholarship*  
Faith Kawai<sup>23</sup>  
Milan Plunkett<sup>23</sup>

*Hartwell Hewahewaokalani Lee Loy, Sr. Scholarship*  
Santee Walker<sup>96</sup>

*Hawai’i Independent Energy Scholarship*  
Kahaliaonahulukupuna Masaoka

*Hawaii Lodging & Tourism Association Don Ho Legacy Scholarship*  
Reece Flores

*Hawai’i Lodging and Tourism Association “Pouhana Hokele” Scholarship*  
Kekaimalieokona Maunakea<sup>22</sup>  
Noa Visperas

*Helen Desha Beamer Scholarship*  
Milan Plunkett<sup>23</sup>



*Henry Laumaewa & Clara Kapeka Kanamu Memorial Scholarship*  
Wahinepoaimoku Nahale-A<sup>23</sup>

*Henry Lee Scholarship*  
Aspen Kane<sup>23</sup>

*Herbert Kealoha Keppeler Scholarship*  
Selah Asano<sup>23</sup>

*Holomua Scholarship*  
Kaluhea Fay Dudoit<sup>20</sup>

*Homer David Kahilialau and Thelma Mabara Burge, Sr. Scholarship*  
Celena Rulloda-Beate  
Teresa Traub

*Ho’omaka’ika’i Named Endowment Fund*  
Kaya Camara

*I Mua Malama JROTC Ka’awaloa Takemoto Scholarship*  
Rachael Tamapolu

*Irmgard Farden Aluli Scholarship*  
Kailena Akau

*Isaac and Mary Harbottle Scholarship*  
Myka Pale

*Iwalani Carpenter Sowa Scholarship*  
Shekinah Orlando

*Jalene Kanani Bell ‘Ohana Scholarship*  
Kenan Pedro

*James Bacon, KS’71 “Little Bacon Urban Achievers” Scholarship*  
Micah Mahuna<sup>23</sup>

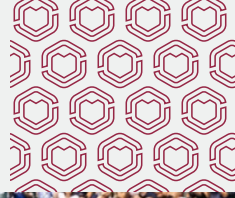
*Jared Keanu Sylva Alavarez Scholarship*  
Kawika Lesa<sup>23</sup>  
Tory Tau-A<sup>23</sup>

*Johansen ‘Ohana Scholarship*  
Kamailah Quiocho<sup>23</sup>

*John A. and Georgia J. Meyer Scholarship*  
Alexander Deauguiar<sup>23</sup>  
Ava Pasa<sup>23</sup>  
Dustin Kealoha<sup>23</sup>  
Harlee Hulihee<sup>23</sup>  
Jaret Love-Tabion<sup>23</sup>

Kohia Rego<sup>23</sup>  
Lauren Correa<sup>23</sup>  
Micah Akiu<sup>23</sup>  
Noah Won<sup>23</sup>  
Ryan Lola<sup>23</sup>

*John and Reiko Kuga Phillip Scholarship*  
Joseph Jimenez



*Johnny Pineapple Scholarship*

Teresa Traub  
Emma-Leah Manumaleuna<sup>23</sup>

*Joseph A. Sowa Scholarship*

Joseph Jimenez

*Joseph David Ahuna Scholarship*

Derek Hardy Soong<sup>20</sup>  
Donna Kenui<sup>22</sup>

*Joseph Nawahi Scholarship*

Kalanihuiia Forbes  
Makamae Ranua<sup>16</sup>  
Nalehuao Puna Donlin

*Ka 'Olelo Hawai'i o Kamehameha Scholarship*

Mailelailiolaka Brown<sup>23</sup>

*Ka Papa o Kanaono-kumaono, Class of '66 Scholarship*

Jensen Codi Wills-Ching<sup>18</sup>  
Mikiala Maynard

*Kahaleku'iinaihe Scholarship*

Brysha Balancio-Sadamaru

*Kahu Wendell B.K. Davis and Mama Kahu Maria K.K. Davis Aloha Ke Akua Scholarship*

Cheyenne Sato<sup>23</sup>  
Pomaikaikekaikamahineaulii Varron<sup>23</sup>

*Kalino Foundation Merit-Based Scholarship*

Pearl Bachiller<sup>21</sup>

*Kalino Foundation Need-Based Scholarship*

Julius Villaro

*Kamehameha Schools "Imua 77" Scholarship*

Joseph Jimenez

*Kamehameha Schools "Nā Hoaloha '86" Scholarship*

John Nihipali

*Kamehameha Schools Alumni Association – Maui Region Scholarship*

Haley Mahoe  
Liana Kanno

*Kamehameha Schools Alumni Association – O'ahu Region Scholarship*

Chancen Law<sup>23</sup>  
Matthew Liu<sup>23</sup>

*Kamehameha Schools Alumni Association West Hawai'i Region Scholarship*

Kyson James-Foree<sup>22</sup>

*Kamehameha Schools Association of Kaua'i Scholarship*

Anaya Alameida<sup>23</sup>  
Brayden Heu-Greenbaum<sup>23</sup>  
Jaymie-Lee Peralta<sup>23</sup>  
Kilinoe Brown<sup>23</sup>  
Kyrie Nuivo<sup>23</sup>  
Lily Puu<sup>23</sup>  
Malie Osakoda<sup>23</sup>  
Sami Ofisa<sup>23</sup>  
Waipuna Olores<sup>23</sup>  
Xhayeani Camarillo<sup>23</sup>

*Kamehameha Schools Association of Maui Scholarship*

Alyssa Cuttie<sup>23</sup>  
Manuel Castro  
Nanea Ah You<sup>22</sup>  
Nephi Hong

*Kamehameha Schools Association of Teachers and Parents Moloka'i "Elua" Scholarship*

Harris Dudoit<sup>21</sup>  
Kade Apuna<sup>18</sup>

*Kamehameha Schools Class of 1950 Scholarship*

Victoria Martin

*Kamehameha Schools Class of 1952 "Na Hoaloha O Kamehameha" Scholarship*

Dawnelle Forsythe

*Kamehameha Schools Class of 1954 "Na Kanalimakumaha" Scholarship*

Amber Kekahuna-Cole  
Tea Kanuha

*Kamehameha Schools Class of 1956 Scholarship*

Devlyn Kojima  
Eryn Nagaishi

*Kamehameha Schools Class of 1957 Scholarship*

Alexander Deaguier<sup>23</sup>  
Courtney Mann<sup>23</sup>

*Kamehameha Schools Class of 1958 "Na Mea Waiwai a Pauahi" Scholarship*

Sydney Decosta<sup>20</sup>

*Kamehameha Schools Class of 1960 Scholarship*

Daniel Ah Hee<sup>22</sup>  
Kawaiolaakealii Kapuni<sup>21</sup>  
Kilinoe Oliveira<sup>23</sup>  
Koa Chang<sup>23</sup>

*Kamehameha Schools Class of 1961 Scholarship*

Kaakakai Kaahui  
Waipuna Olores<sup>23</sup>

*Kamehameha Schools Class of 1962 Scholarship*

Daniel Ah Hee<sup>22</sup>

*Kamehameha Schools Class of 1963 Scholarship*

Kahiau Snyder<sup>22</sup>  
Kaya Camara

*Kamehameha Schools Class of 1965 Scholarship*

Kyson James-Foree<sup>22</sup>

*Kamehameha Schools Class of 1967 "Ka Lei o Kaiona" Scholarship*

Kahaliaonahulukupuna Masaoka  
Ty Simpson-Kane<sup>22</sup>

*Kamehameha Schools Class of 1968 "Ka Poli O Kaiona" Scholarship*

Alyssia Fernandez Ruiz<sup>22</sup>  
Kamailah Quiocho<sup>23</sup>

*Kamehameha Schools Class of 1970 Scholarship*

Amaris Hall  
Bryson Kau<sup>23</sup>  
Mahealani Plunkett<sup>23</sup>  
Shaley Yoshizu<sup>22</sup>

*Kamehameha Schools Class of 1971 "Get Chance" Scholarship*

Kawika Lesa<sup>23</sup>  
Megan Hoopai

*Kamehameha Schools Class of 1972 Scholarship*

Nalehuao Puna Donlin  
Shaley Yoshizu<sup>22</sup>

*Kamehameha Schools Class of 1973 "Proud to be '73" Scholarship*

Jazlyn Bulatao  
Shaylynn Anderson-Agpaoa

*Kamehameha Schools Class of 1974 Scholarship*

Ava Davis<sup>23</sup>  
Braysen Libed<sup>16</sup>  
Kaakakai Kaahui

*Kamehameha Schools Class of 1975 Scholarship*

Jelacia Peralta<sup>19</sup>  
Kilinoe Oliveira<sup>23</sup>  
Larissa Lee  
Puuwaihāa Kalauokaaea-Kahele

*Kamehameha Schools Class of 1976 Scholarship*

Meghan Mung Lim

*Kamehameha Schools Class of 1978 Scholarship*

Sean Serville<sup>22</sup>

*Kamehameha Schools Class of 1979 "Ho'okupono" Scholarship*

Sierra Furukawa<sup>19</sup>

*Kamehameha Schools Class of 1980 Scholarship*

Kawena Lorenzo

*Kamehameha Schools Class of 1983 Scholarship*

Lola Duropan<sup>21</sup>

*Kamehameha Schools Class of 1984 "He Waiwai Nui Ka Lokahi" Scholarship*

Dakota Briley<sup>23</sup>

*Kamehameha Schools Class of 1990 Ku Lokahi Scholarship*

Eryn Nagaishi  
Pililai Kaai

*Kamehameha Schools Class of 1991 Scholarship*

Isaac Knell  
Leanna Paik<sup>23</sup>  
Shannon Autrey

*Kamehameha Schools Class of 1993 "Na Lei Kukui" Scholarship*

Hema Watson  
Melyssa Moderow





*Kamehameha Schools Class of 1994 Scholarship*  
Makana Gomes<sup>23</sup>

*Kamehameha Schools Class of 1995 Ka Ua Kipu'upu'u Scholarship*  
Teresa Traub

*Kamehameha Schools Class of 1996 Scholarship*  
Wahinepoaimoku Nahale-A<sup>23</sup>

*Kamehameha Schools Class of 1997 Scholarship*  
Pualii Ann Zidek<sup>23</sup>

*Kamehameha Schools Class of 2001 Scholarship*  
Danielle Akiona  
Sharilyn Garcia

*Kamehameha Schools Class of 2003 "Na Pua 'Akala a Pauahi" Scholarship*  
Rachael Meisner<sup>07</sup>

*Kamehameha Schools Class of 2005 Scholarship*  
Celena Rulloda-Beate

*Kamehameha Schools Hawai'i Parent Teacher Organization Scholarship (KSHPTO)*  
Apoleihikiula Carvalho<sup>23</sup>  
Ava Leilani Shimabuku<sup>23</sup>  
Cammie Masanda<sup>23</sup>  
Cheyenne Sato<sup>23</sup>  
Ciana-Lei Bence<sup>23</sup>  
Elise Auna<sup>23</sup>  
Grace Merryman<sup>23</sup>  
Jaiden Bettis<sup>23</sup>  
Jasmine Serion<sup>23</sup>  
Jayden Alonzo-Estrada<sup>23</sup>  
Kaede Lynn Saniatan<sup>23</sup>  
Kaelum Lumanlan<sup>23</sup>  
Kaleaokapuamakani Kuamoo<sup>23</sup>  
Kamailah Quiocho<sup>23</sup>  
Kaolapaolilikoikala Masuko<sup>23</sup>  
Kelise Figueroa<sup>23</sup>  
Kenui Kalaola-Maruquin<sup>23</sup>  
Kilinoelehua Helm<sup>23</sup>  
Madison Okimoto<sup>23</sup>  
Makena Aiona-Agra<sup>23</sup>  
Micah Mahuna<sup>23</sup>  
Raeka Kaanaana<sup>23</sup>  
Sarah Schubert<sup>23</sup>  
Savanna Colliado<sup>23</sup>  
Shade Lonokapu<sup>23</sup>  
Siddalee Amaral<sup>23</sup>  
Sophia Wilson<sup>23</sup>  
Tehya Thome<sup>23</sup>  
Waiahuli Akau<sup>23</sup>  
Zackary Lapenia<sup>23</sup>

*Kamehameha Schools Kapalama Association of Teachers and Parents "Ho'ihi Aku, Ho'ihi Mai" Scholarship*  
Ethan Maskell<sup>23</sup>  
Ikaika Adric<sup>23</sup>

*Kamehameha Schools Kapalama Class of 2006 Scholarship*  
Matthew Liu<sup>23</sup>

*Kamehameha Schools Maui Parent Teacher Student Organization 'A'apueo Scholarship*  
Ava Davis<sup>23</sup>  
Jayna Kanoholani<sup>23</sup>  
Kaydence Lilio<sup>23</sup>  
Moani Tiare Atay<sup>23</sup>  
Piikea Keahi<sup>23</sup>  
Tiare Amarin<sup>23</sup>

*Keaholoa Investment and Finance Scholarship*  
Iliana Keawe-Oliveira<sup>22</sup>

*Kekuna'ai'ali'i Scholarship*  
Kainoa Hottendorf<sup>23</sup>  
Tayvhe-Lei Kaupu-Galon<sup>22</sup>

*Keola & Kapono Beamer Scholarship*  
Macyn-Shane Hanawahine<sup>23</sup>

*KGMB/KHON Video Production Scholarship*  
Kalena Carpenter<sup>23</sup>  
Logan Houghtailing<sup>23</sup>

*Kunuiakea Scholarship*  
Baylee Goeas Galdeira  
Hema Watson  
Kylee-Ray Tactacan  
Naomi Tachera  
Shaylynn Anderson-Agpaoa  
Taylor Nishimoto<sup>21</sup>  
Teresa Traub

*Lance KS'83 & Andrea Hussey KS'83 Leong Scholarship*  
Stephanie Scoville<sup>16</sup>

*Lee Ann DeLima Scholarship*  
Jacob Garcia<sup>23</sup>  
Karli Dean<sup>23</sup>

*Lee Thomas Pacific Island Scholarship*  
Bella Steinke<sup>23</sup>

*Lena Kaulumau Machado Haku Mele Fund*  
Milan Plunkett<sup>23</sup>

*Lokomaika'i Scholarship*  
Elliott Markell<sup>17</sup>

*M. Kimo Wong KS'71 and Shelly Wong and Noe Noe Wong-Wilson KS'68 'Ohana Scholarship*  
Kahiau Snyder<sup>22</sup>  
Nawaioluokealoha Makua<sup>15</sup>

*M.E. Bacon KS'72 Uncle Herb & Kupuna Lehua Lee-Loy Weatherwax Aloha 'Aina Scholarship*  
Kaleiolamau Kendrick

*Mahi'ai Scholarship*  
Maverick Yasuda

*Makaloa Scholarship-G*  
Diana Alonso-Sosa  
Jesslin Sniffen<sup>12</sup>  
Kahiau Cockett-Nagamine<sup>18</sup>  
Taylor Lum

*Makaloa Scholarship-UG*  
Adriana Apana<sup>23</sup>  
Brienne Bartolome  
Chanel Matsumoto<sup>23</sup>  
Emma Willing<sup>23</sup>  
Grant Lau<sup>22</sup>  
Hinanowelo Perry<sup>23</sup>  
Justise Takasaki

*Kahiwaleinaniokeloha Ili*<sup>23</sup>  
Kaiana Nahina<sup>22</sup>  
Kaily Sakai  
Kaponu Liu  
Kc Layana-Mari Aipoalani<sup>23</sup>  
Keanu Ventura<sup>23</sup>  
Kekanakameakapuuwaiikaika Endo<sup>23</sup>  
Liam Meza<sup>23</sup>  
Liv Deeley  
Natalie Alvarez  
Raven-Michael Boneza-Solatorio  
Sinjin Cho-Tupua<sup>23</sup>  
Terina Garcia<sup>23</sup>

*Makuakane Inspirational Educator Scholarship*  
Kaci-Cheree Dizon  
Kahiau Snyder<sup>22</sup>  
Mailelailiolaka Brown<sup>23</sup>  
Nawaioluokealoha Makua<sup>15</sup>

*Mary Atherton Richards Scholarship*  
Arisa Kahaialii<sup>23</sup>  
Aubrey Ahana<sup>23</sup>  
Bella Steinke<sup>23</sup>  
Courtney Mann<sup>23</sup>  
Elise Auna<sup>23</sup>  
Emily Aiona<sup>23</sup>  
Emma Akana<sup>23</sup>  
Faith Paredes<sup>23</sup>  
Grace Merryman<sup>23</sup>  
Haliwaikehalani Keahi<sup>23</sup>  
Jada Lee<sup>23</sup>

Jaede Hinau-Kobatake<sup>23</sup>  
Jaiden Bettis<sup>23</sup>  
Jasmine Serion<sup>23</sup>  
Jayna Kanoholani<sup>23</sup>  
Jordan Holokai-Jacinto<sup>23</sup>  
Jordyn Koki<sup>23</sup>  
Kaedynce Crivello-Castro<sup>23</sup>  
Kamailah Quiocho<sup>23</sup>  
Kaylee Wright<sup>23</sup>  
Kristin Fong<sup>23</sup>  
Lauryn Dubach<sup>23</sup>  
Madison Okimoto<sup>23</sup>  
Pualii Ann Zidek<sup>23</sup>  
Roma Lerner<sup>23</sup>  
Taylor Aloy<sup>23</sup>  
Tia Tanimoto<sup>23</sup>  
Tiare Amarin<sup>23</sup>  
Waiahuli Akau<sup>23</sup>

*McClellan Family Scholarship*  
Hiilei Carvalho-Mattos<sup>22</sup>  
Mahina Amoy<sup>21</sup>

*Michael "Mikey" Miyake Scholarship*  
Jaime Wond<sup>23</sup>  
Kailani Mclain<sup>23</sup>

*Mr. John Riggle Scholarship*  
Josiah Fronda<sup>20</sup>

*Myron & Laura Thompson Scholarship*  
Kaya Camara  
Michelle Navor

*Na Pua Mae'ole o Kamehameha Class of 1953 Scholarship*  
Kaleaokapuamakani Kuamoo<sup>23</sup>

*Nanea Scholarship*  
Kalena Shiroma<sup>10</sup>

*Native Hawaiian Chamber of Commerce Scholarship*  
Maluhiaikalaiokaihuhalali Nahuina<sup>23</sup>

*Native Hawaiian Visual Arts Scholarship*  
Kieren Mckee<sup>22</sup>

*Odell & Hastings Slagel Scholarship*  
Anaya Alameida<sup>23</sup>

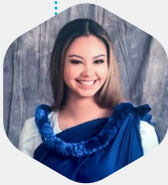
*Pai'ea Kane/Wahine Scholarship*  
Kaolapaolilikoikala Masuko<sup>23</sup>  
Sophia Wilson<sup>23</sup>

*Park Kitashima Scholarship*  
Kaluhea Fay Dudoit<sup>20</sup>

*Patrick L. Hiram - John S. Freitas Scholarship*  
Karlie Kahalehoe-Cadirao



“To the donors of the Warren Nakupuna Ah Loo Scholarship, thank you endlessly for your generosity. Working with and caring for Hawai‘i’s community, especially Native Hawaiians, has always been a dream of mine, and it is through these funds I’m able to pursue it via medicine at the University of California, Berkeley this fall. Know that I do not take this honor lightly; your support, both financially and emotionally, means the absolute world and I vow to one day pay your charity back in kind. Hā‘ale‘ale ku‘u pu‘uwai me ke aloha.”



**Stacy Cambra KSK'23**  
University of California, Berkeley  
*Warren Nakupuna Ah Loo Memorial Scholarship*

*Pauhi Scholars*

- Ava Davis<sup>23</sup>
- Bryson Kau<sup>23</sup>
- Cheyenne Sato<sup>23</sup>
- Ciana-Lei Bence<sup>23</sup>
- Dustin Kealoha<sup>23</sup>
- Emi Shigekane<sup>23</sup>
- Isaiah Lampitoc<sup>23</sup>
- Jacob Garcia<sup>23</sup>
- Jane-Grace Cootey<sup>23</sup>
- Jenson Nakasono<sup>23</sup>
- Jordan Holokai-Jacinto<sup>23</sup>
- Katie Anakalea<sup>23</sup>
- Kira Gomez<sup>23</sup>
- Koa Chang<sup>23</sup>
- Lauryn Dubach<sup>23</sup>
- Lindsey Enanoria<sup>23</sup>
- Savannah Browne<sup>23</sup>
- Siddalee Amaral<sup>23</sup>
- Tyler Sado<sup>23</sup>

*Pauhi Scholars - Liko Lehua*

- Joseph Ahuna<sup>23</sup>
- Kaolapaolilikoikala Masuko<sup>23</sup>

*Pauhi Scholarship*

- Alexis Torres<sup>23</sup>

*Paul Pua'a 'Ohana, Paul Moses Murray & Malia Murray Grant*

- Kade Apuna<sup>18</sup>
- Moani Tiare Atay<sup>22</sup>

*Paul Robert Gouin MD Memorial Scholarship Fund*

- Justise Takasaki

*Pa'upena Named Endowment Fund*

- Braden Wong<sup>23</sup>

*Pono & Louise Beamer Scholarship*

- Wahinepoaimoku Nahale-A<sup>23</sup>

*Pop Diamond Scholarship*

- Zachary Quemado<sup>23</sup>

*Pu'uwai Hau Kila Scholarship*

- Caleb Yuen
- Destiny Paris-Perrells
- Ross Ledda
- Shaley Yoshizu<sup>22</sup>

*Randy Wayne Ahuna Scholarship*

- Chancen Law<sup>23</sup>

*Rebecca Kunipo Ching Scholarship*

- Kaalea Hanawahine
- Landee Resuello<sup>23</sup>

*Rebecca Lamahilani Haalou Medeiros Scholarship*

- Megan Hoopai

*Reuben Lee Kwai Brandt Scholarship*

- Koa Chang<sup>23</sup>

*Richard and Myrtle Kim Scholarship*

- Sydney Decosta<sup>20</sup>

*Richard Lyman, Jr. Memorial Scholarship*

- Kassidie Hayashida<sup>23</sup>
- Tiare Aufrata

*Richard Marks Scholarship*

- Kylee-Ray Tactacan

*Richard Y.K. and Hattie G. Au Scholarship*

- Joslyn Kawelo<sup>20</sup>

*Roy L. Cachola Scholarship*

- Megan Hoopai

*Sanborn 'Ohana Ho'omau Scholarship*

- Kaleiolamau Kendrick

*Sarah Keli'ilolena Lum Konia Nakoia Scholarship*

- Celena Rulloda-Beate

*Stanley & Besse Fortuna Memorial Scholarship*

- Jaiden Bettis<sup>23</sup>

*Stanley & Janet Zisk Scholarship*

- Keilana Ando-Aana

*T.C. Yim Named Scholarship*

- Natalie Alvarez

*Tauati 'Ohana Scholarship*

- Kai Aiona-Agra<sup>23</sup>
- Siddalee Amaral<sup>23</sup>

*Taylor Nanea Pangan-Fergerstrom Memorial Scholarship*

- Kilinoe Oliveira<sup>23</sup>

*Tennyson Keolalani Tom Scholarship*

- Mahealani Plunkett<sup>23</sup>
- Zane Yogi<sup>23</sup>

*Teresa Kaleiopu Lau Scholarship*

- Monica Alo

*The Emma Kailikapuolono Metcalf Beckley Nakuina Aloha 'Āina Patriot Scholarship*

- Kawaiolaakealii Kapuni<sup>21</sup>

*Theodore Richards Scholarship*

- Faith Kawai<sup>23</sup>

*Theodore Vierra Scholarship*

- Kahala Neumann<sup>23</sup>

*Trudi and Hiram de Fries Educational Scholarship*

- Destiny Paris-Perrells

*U'ilani Stender Scholarship*

- Deshaynee Iseri<sup>18</sup>
- Destiny Paris-Perrells
- Donna Kenui<sup>22</sup>
- Mikiala Maynard

*Ula Baker Sheecha Scholarship*

- Autumn Tada<sup>23</sup>
- Gabrielle Kalama<sup>23</sup>
- Hailey Park<sup>23</sup>
- Kieren McKee<sup>22</sup>
- Luluk Brown-Spielman<sup>23</sup>
- Mailelauhulaliakauano Hoe<sup>22</sup>
- Sophia Siangco<sup>23</sup>
- Zachary Quemado<sup>23</sup>

*USS Kamehameha Scholarship*

- Christina Kaleiwahea
- Pearl Bachiller<sup>21</sup>

*Vaughn G. A. Vasconcellos KS'71 Scholarship*

- Micah Mahuna<sup>23</sup>
- Moanna Blaksteen

*Villa 'Ohana Ho'ihō'i Scholarship*

- Chazlynn Duran<sup>22</sup>
- Joslyn Kawelo<sup>20</sup>

*Violet K. KS'32 & Henry T. Hughes, Jr. Scholarship*

- Sandee Walker<sup>96</sup>

*Virginia Aulani Rowan Scholarship*

- Kassidie Hayashida<sup>23</sup>

*Waipa Nishimura Memorial Scholarship*

- Jordyn Nishimura<sup>23</sup>
- Tate Hirayama<sup>23</sup>

*Wallace and Barbara Ka'awaloa Scholarship*

- Chavis Lee<sup>23</sup>
- Emily Loscalzo<sup>23</sup>

*Warren Nakupuna Ah Loo Memorial Scholarship*

- Matthew Liu<sup>23</sup>
- Stacy Cambra<sup>23</sup>

*William and Judith Fernandez Scholarship*

- Kaya Camara
- Waipuna Olores<sup>23</sup>

*William K. and Julia T. Kapololu Scholarship*

- Tehina Kahikina

*William S. Richardson Commemorative Scholarship*

- Holly Doyle
- Kekailani Wong Yuen<sup>16</sup>

*Winona Beamer Scholarship*

- Moanahiwalani Walker<sup>23</sup>

*Yasuko Mitsuyasu Master of Accounting Scholarship*

- Christina Kaleiwahea

*Yin 'Ohana Scholarship*

- Kekoa Catiggay Kanahahe

*Zillah Young Memorial Scholarship*

- Faith Kawai<sup>23</sup>



# I Hawai'i nō nā Hawai'i i ka 'āina

Hawai'i – its lands and resources – makes us Hawaiian



Kamehameha  
Schools®

