

2020 KAMEHAMEHA SCHOOLS ANNUAL REPORT

MVTO
MVKV





Hō'ike Kū Makahiki o Ke Kula 'O Kamehameha 2020

2020 KAMEHAMEHA SCHOOLS ANNUAL REPORT
JULY 1, 2019 - JUNE 30, 2020

5
Welina

6
Makawalu

KEIKI AT THE CENTER

8
The value of early education
Kamehameha Schools unites with state and private agencies to improve early learning experiences

CHANGING THE SYSTEM

10
Learning goes digital
Navigating the seas of uncertainty to maintain our commitment to haumāna

12
Teaching outside the walls
Kumu Joel Truesdell integrates culture and technology for distance learning success

COMMITTED TO 'ĀINA

13
Reviving what was lost
Restoring and reviving relationships in Ka'ū

14
Growing stewardship
Innovative management allows koa, 'iliahi to flourish

2019-2020 Pauahi Foundation Scholarship Recipients

EDUCATIONAL SUCCESS

16
Leading by example
Kamehameha Schools Kapālama graduate, Tehani Malterre elected to Neighborhood Board

18
Let them lead
Student leaders demonstrate resiliency in face of pandemic

2019-2020 Pauahi Foundation Scholarship Recipients

RESOURCES & IMPACTS

20
Educational Spending

21
2019-2020 Pauahi Foundation Scholarship Recipients

28
'Āina & Innovation

29
Endowment

PAUHI FOUNDATION

31
Scholarship impacts

32
Why we give
Nakupuna Foundation

34
2019-2020 Donors

36
Imua nā haumāna
Scholarship recipient spotlight

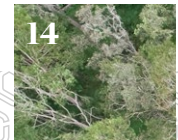
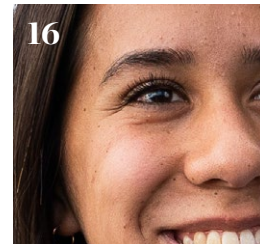
38
2019-2020 Pauahi Foundation Scholarship Recipients

PLACEKEEPING

40
Build for tomorrow
Cultivating communities so keiki can thrive

41
Normalizing 'ōlelo Hawai'i
Our cultural identity lives through the Hawaiian language

42
Panina



Hānai i ke keiki, ola ka lāhui

Nurture the child and the people thrive





Aloha mai kākou,

‘O KA HO‘OMA‘A A ME KA HO‘OMANAWANUI kekahi o nā mākia nui o ka makahiki 2020. Ma loko o ka ho‘okele ‘ana o nā kaiaulu, ka ‘ahahui, a me nā ‘ohana a mākou i nā ‘ino maopopo ‘ole o ka ma‘i ahulau COVID-19, ua ‘auamo ha‘aheo mākou i ka lawelawe pū ‘ana me ia mau kaiaulu, nā hoa ku‘ikahi, a me ka lāhui.

I loko o ia mau pa‘akikī like ‘ole, aia nā keiki ma ke kikowaena o kā mākou mau hana a pau. Ua ho‘omau mākou i ka ho‘okuleana ‘ana i nā haumāna, ma ke ‘ano he mau alaka‘i ‘ōiwi e ‘imi mau ana i ka pono o ko lākou mau kaiaulu, me ka ho‘omaopopo le‘a ‘ana i ko mākou kuleana nui ‘o ka ho‘oulu ‘ana iā lākou i kēia wā no ka pono o kēia mua aku.

Ma ka makahiki i hala akula, ua ho‘omaopopo mākou, ‘o ka paepae pa‘a pono o nā kahua kula, nā kula kamali‘i, nā kaiaulu, ka ‘āina, a me nā mākeke kūloko a kau‘āina kekahi, ‘o ia ka mea e na‘i ‘ia ai nā ālaina e kū mai ana. Ua pili mākou ma nā ‘enehana hou loa, no ka ho‘oikaika ‘ana i ke ‘ano ho‘omanawanui o nā keiki a me nā kaiaulu.

Ua ho‘olana ‘ia mākou e ko mākou mau hoa ku‘ikahi, ko mākou ho‘oilina, a me ke alaka‘i-na kūmau o Ke Ali‘i Pauahi, a ua kau nui ko mākou mana‘olana a me ko mākou mana‘o pa‘a no ka wā e hiki mai ana no ko kākou po‘e, no ka nu‘ukia o ka lāhui ola.

ADAPTATION AND RESILIENCY proved to be key themes throughout 2020. As our communities, our organization, and our ‘ohana navigated the uncertainties of the COVID-19 pandemic, we embraced the kuleana to serve alongside our communities, partner organizations, and the lāhui.

Through it all, we started and ended each day with our keiki at the center. We continued to envision our learners as ‘ōiwi leaders who contribute to and lead their communities, and we know it is our distinct privilege and responsibility to steward them today to ensure a brighter future for all of us tomorrow.

Over the past fiscal year, we have seen that strong foundations on our campuses and preschools, in our communities, on our ‘āina, and in local and global financial markets have allowed us to overcome the challenges presented. We connected in new ways through emerging technologies, building resiliency in our keiki and communities.

Buoyed by our partners, our heritage, and the eternal guidance of Ke Ali‘i Pauahi, we are more determined and hopeful than ever for the future of our people – and the vision of a thriving lāhui.



ABOVE LEFT:
(From left) Kamehameha Schools trustees Robert K.W.H. Nobriga KSK’91, Crystal Kaulani Rose KSK’75, Lance Keawe Wilhelm KSK’83, Elliot Kawaiho‘olana Mills, and Micah Alike Kāne KSK’87.

ABOVE RIGHT:
Livingston “Jack” Wong
Chief Executive Officer





‘O KA MAKAWALU, ‘o ia ho‘i ka ‘imi ‘ana i ka ‘ike pāpālua ma nā kuana‘ike makawalu. Ke ho‘oikaika nei Ke Kula ‘o Kamehameha i kēia mana‘o ma ko mākou mālama mau ‘ana ‘o nā keiki ke kia nui o kā mākou mau hana a pau e kūlia aku ana. Ma loko o ke kūpa‘a mau o nā limahana, nā hoa ku‘ikahi, a me ka ‘ohana, lōkahi mākou i ka pa‘u no ka pono o kā kākou mau keiki i kēia mua aku. Kohu mākini kākou, he mau ihe kākou i hāwele pū ‘ia - he mana‘o nōhie, a mana nui na‘e, no ka pono o ka lāhui i ‘oi aku ka ikaika a i ho‘oholo-mua ‘ia e nā alaka‘i a me nā haumāna ‘ōiwi.

Ua piha ka makahiki hope o ke Papahana Ka‘akālai 2020 i ka ho‘oma‘a hikiwawe ma muli o ka ma‘i ahulau COVID-19. Ma nā māhele ma hope aku ma “Makawalu” e hō‘ike‘ike ‘ia ai nā ‘ao‘ao like ‘ole o ko ke Kula ‘o Kamehameha mau lanakila ‘ana. Ma loko o kā mākou mau hana ‘o ke kūkulu kaiaulu, ka ho‘ona‘auao kamali‘i, ka holomua na‘auao, ke kōkua manawale‘a, ke kahu ‘āina, a me ke kahu kumu-waiwai, hō‘ike‘ike ‘ia ma loko o kēia pukana nei nā ala lehulehu i holomua ai ‘o KS i kona nu‘ukia ma ka makahiki 2020 a mau aku.

MAKAWALU, the practice of seeking insight and impact through multiple perspectives, is strengthened by the commitment of Kamehameha Schools (KS) to keeping our keiki at the center of everything the organization strives to accomplish. With the dedication of our employees, partners, and ‘ohana, we kākou to create a better future for our keiki. Like mākini, we are many spears bound together – a simple but powerful concept that leads to a stronger lāhui driven by ‘ōiwi learners and leaders.

The final year of Strategic Plan 2020 was filled with rapid adaptation due to the COVID-19 pandemic. The following sections in “Makawalu” demonstrate the different facets of KS’ accomplishments. Through our work and dedication to uplifting the lāhui, this publication showcases the many ways in which KS has and continues to further its mission and vision in 2020 and beyond.



The value of early education

Kamehameha Schools unites with state and private agencies to improve early learning experiences

Iola ka lāhui i ka muli haumāna.

“Ke nānā ‘ia ka ‘ōnaehana ho‘ona‘auao, hā‘ule mau ka moku‘āina ‘o Hawai‘i ma ka ho‘okō ‘ana i nā pono o nā haumāna ‘ōpiopio loa a mākou, akā, ke ho‘oponopono ‘ia nei” wahi a ke **Kauka Wai‘ale‘ale Sarsona**, ka hope pelekikena o ka Hui Hi‘ialo o Ke Kula ‘o Kamehameha, he hui e ho‘oulu ana i ka holomua kā‘oko‘a o nā ‘Ōiwi Hawai‘i ma ke ‘ano he mau alaka‘i no nā kaiaulu kūloka a kūwaho, mai ka pae kamali‘i a i ka pae makuā.

He holomua nō ka ho‘oholo ‘ia o ke Kānāwai 46, he kānāwai ho‘ona‘auao kamali‘i laulā ia i pūlima ‘ia e ke

A thriving lāhui starts with the youngest haumāna.

“Overall, the state of Hawai‘i falls short in meeting the needs of our youngest learners, but positive changes are being made,” said **Dr. Wai‘ale‘ale Sarsona**, Kamehameha Schools vice president of Hi‘ialo, which fosters the holistic development of Native Hawaiians as local and global leaders from a young age through adulthood.

A step forward was taken with the adoption of Act 46, a sweeping early education measure that Gov. David Ige signed into law in September 2020. It aims to expand the state’s



Kia'āina David Ige ma Kepakemapa 2020. 'O kona pahuhopu ka ho'ākea 'ana a'e i ka nui o ka 'ōnaehana kula kamali'i o ka moku'āina, ma mua ho'i o ka makahiki 2032, i pa'a ke ala e komo ai ko Hawai'i mau keiki o ka 'ekolu a 'ehā makahiki i nā pō'aiapili a'o kamali'i.

'Ānō, ke ho'olako kālā nei ke Kula 'o Kamehameha i 10 lumi papa kula kamali'i aupuni ma o ke ku'ikahi me ke Ke'ena Ho'ona'auao (DOE) a me ke Ke'ena Ho'okō Ho'ona'auao Kamali'i (EOEL). Makemake nui 'ia ka ho'okomo 'ia o ke keiki i nā kula aupuni, a ma o ua kânāwai hou lā, e 'oi aku ana nō paha ia makemake. He 'umi a 'oi makahiki no ka ho'okō i ke Kânāwai 46, eia na'e, he pono ke kākō'o kālā i kēia manawa 'ānō, a i ka makahiki 2020, ua ho'ākea aku 'o KS i nā hana kākō'o i ka ho'ona'auao kamali'i.

I mea e 'alo 'ia ai nā ālaina 'ekonomia o ka ma'i ahulau COVID-19, ua ho'okumu akula 'o KS i ka'akālai ho'opukapuka alolua no ke kākō'o i kekahi mau kula kamali'i pono'i. Na KS ke kākī hele kula e uku pololei i nā kula kamali'i i mea e emi ai nā ālaina kālā o ke kāinoa 'ana. He kōkua pū kēia mau ho'opukapuka i ka pono 'ole e panī 'ia nā kula kamali'i ma kēia wā hāiki. Ua wae 'o KS i nā hoa kaiulu ma Kaua'i, Maui, Hawai'i, a me O'ahu no kēia pāhana ko'iko'i.

preschool capacity so that by 2032, all 3- and 4-year-olds in Hawai'i will have access to early learning experiences.

Kamehameha Schools (KS) currently funds 10 public preschool classrooms through a partnership with the Hawai'i State Department of Education (HIDOE) and the Executive Office on Early Learning (EOEL). The demand for enrollment is high, and with this new legislation, it's expected to grow. The target date of fulfillment established by Act 46 might be more than a decade away, but investment is needed now, and in 2020, KS expanded the ways in which it invests in early education.

To address the economic challenges brought on by the COVID-19 pandemic, KS also launched a two-pronged investment strategy to help support select preschools. KS will offset the cost of tuition by making direct payments to the preschools to help ease the financial barriers that often stand in the way of enrollment. These investments will also help prevent preschool closures at a time when they are most needed. KS has identified community partners on Kaua'i, Maui, Hawai'i Island, and O'ahu to collaborate on this crucial initiative.



“Overall, the state of Hawai'i falls short in meeting the needs of our youngest learners, but positive changes are being made.”

- Dr. Wai'ale'ale Sarsona, Kamehameha Schools vice president of Hi'ialo





Learning goes digital

Navigating the seas of uncertainty to maintain our commitment to haumāna

I ka makamua o ka laha ‘ana o ka ma‘i COVID-19 ma nā kaiaulu o Hawai‘i i kēlā kau kupulau aku nei, ua hikwawe ka ‘oni ‘ana o ke Kula ‘o Kamehameha i pa‘a pono ai ka palekana o nā ‘ohana o ka honua kula ma o ka mālama ‘ana i ke kelea‘o. Ua ‘ike nā lālā alaka‘i i ka pono o ko KS hō‘ano hou ‘ana i ke ala ho‘ona‘auao ma ka lawelawe ‘ana i papahana ‘oi kelakela a puni ke ao ma o nā ki‘ina kelea‘o.

When COVID-19 began spreading rapidly through communities in Hawai‘i last spring, Kamehameha Schools (KS) responded quickly to ensure the safety of campus ‘ohana by shifting to virtual classrooms. Leadership recognized the need to modernize KS’ approach to education by delivering a world-class experience through online offerings.

“KS Digital will continue to evolve to meet personalized learning needs of haumāna across our pae ‘āina and eventually around the globe.”

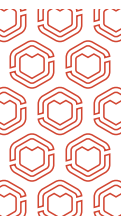
- Darrel Hoke, Kamehameha Schools executive vice president of Administration

Ua ho‘omoe ‘ia na KS Digital he ala e loa‘a ai nā lako ho‘ona‘auao ‘enehana, ka ho‘ona‘auao Mālaa‘o - Papa 12 i ‘ākūloia ‘ia a me nā ha‘awina ‘ike Hawai‘i no nā haumāna o nā pae makahiki like ‘ole. Ho‘āmana ‘ia nā kumu na kēia pūku‘i ‘enehana hou a ho‘owaiwai pū ‘ia ke a‘o haumāna i nā manawa like ‘ole ma nā wahi like ‘ole.

He ‘ane‘ane 1,900 mau haumāna e hele kula ana ma nā kula o ke Ke‘ena Ho‘ona‘auao o ka Moku‘āina ‘o Hawai‘i (HIDOE), a ma kahi o 280 mau kumu, alaka‘i, a limahana, ‘o ia ka huina o ka po‘e i ho‘ohana i ka ‘enehana KS Digital i ka makahiki kula 2020-21. Hui pū ‘ia, ua komo pū mai he 12 mau kula HIDOE a me ‘elua mau kula ho‘āmana mo‘omeheu Hawai‘i i ia mau ha‘awina KS Digital, a ua ho‘oma‘ama‘a ‘ia kekahi mau kumu no Ke Kula ‘o Kana Lui no ka ho‘ohana ‘ana i kēia ‘enehana no ke a‘o ‘ana i nā papa ha‘awina o kēia mua aku.

KS Digital provided a gateway to an array of educational technology tools, accredited K-12 education and Hawaiian culture-based content for haumāna of all ages. The innovative hub empowers teachers and enriches student experiences, anytime and virtually anywhere.

Nearly 1,900 students attending Hawai‘i State Department of Education (HIDOE) schools and approximately 280 HIDOE kumu, administrators and support staff utilized the KS Digital platform during school year 2020-21. In all, 12 HIDOE schools and two Hawaiian-focused charter schools participated in the KS Digital experience, while kumu from Saint Louis School were also trained to utilize the platform in future lesson plans.



Ma o ka pilina lō'ihi a nui o ka wawai me Arizona State University i kahua mai ai a pa'a kēia ala kelea'o hou 'oi ai ko lākou mau 'ōnaehana ho'okele a'o ikaika loa a pēia pū kā lākou mau kumu wawai kelea'o lehulehu ma lalo o ASU Prep Digital. Ua ho'olaha 'ia 'o KS Digital i 'Aukake 2020 a ke ho'ohana 'ia nei ma nā honua Mālaa'o - 12 'ekolu o KS, a ma nā kula kamali'i he 29.

Inā ma loko o ka lumi papa ma ke a'o alo a he alo 'ana, ma ke kelea'o paha mai ka hale aku, a i 'ole ma kekahi 'ano e ho'ohuihui 'ia ai ia mau ki'ina a'o 'elua, hō'oi'a 'o KS Digital i ka launa a kahe pono o ia mau pō'aiapili a'o a pau.

"Kupanaha ka 'a'a 'ana o ka 'ohana KS i ka ho'okele i ka 'enehana a me nā kuleana kumu o ke kelea'o i mohala a'ela nā ala ho'ona'auao wawai no kā mākou po'e haumāna kula kamali'i a Mālaa'o - Papa 12 kekahi 'oi ai ka ma'i ahulau," wahi a Darrel Hoke, Hope Pelekikena Ho'okō o ke Ke'ena Ho'okele o KS. "E mau ana ka ulu 'o KS Digital i mea e ho'okō 'ia ai nā pono a'o pono'i o nā haumāna a puni ka pae 'āina, a puni auane'i ka honua."

Na KS Digital e wehe i ka 'ipuka o ke a'o 'ōlewa a kohu pilikino e kū ana i nā ikaika, nā pono, a me nā hoihoi o kēlā haumāna, kēia haumāna e kōkua aku ana iā lākou e lanakila ma ke ao e ho'oku'iku'i nei.

'Oiai e mōhāhā a'e ana ke kahua kelea'o, 'o ka pahuhopu, 'o ia ka lilo 'ana 'o KS Digital 'o ia kahi e kaomi mua ai ka mea a'o 'Ōiwi Hawai'i e 'imi ana i ka loa'a o nā ala ho'ona'auao e kō ai ko lākou mau pahuhopu pono'i. Ma o ka ho'ākea 'ana i ke ala e loa'a ai ka ha'awina a kūmole Hawai'i hoihoi, ke kā nei 'o KS i ka mana o ka 'enehana e kāko'o aku ai i kekahi hanauna aku o ka po'e alaka'i 'ōiwi.

KS leveraged its long-standing partnership with Arizona State University (ASU) for access to proven learning management systems as well as the wealth of resources offered by ASU Prep Digital. KS Digital launched in August 2020 and is now used at KS' three K-12 campuses and 29 preschools.

Whether in the classroom for face-to-face learning, at home for distance learning or through hybrid learning opportunities, KS Digital ensures continuity across learning experiences.

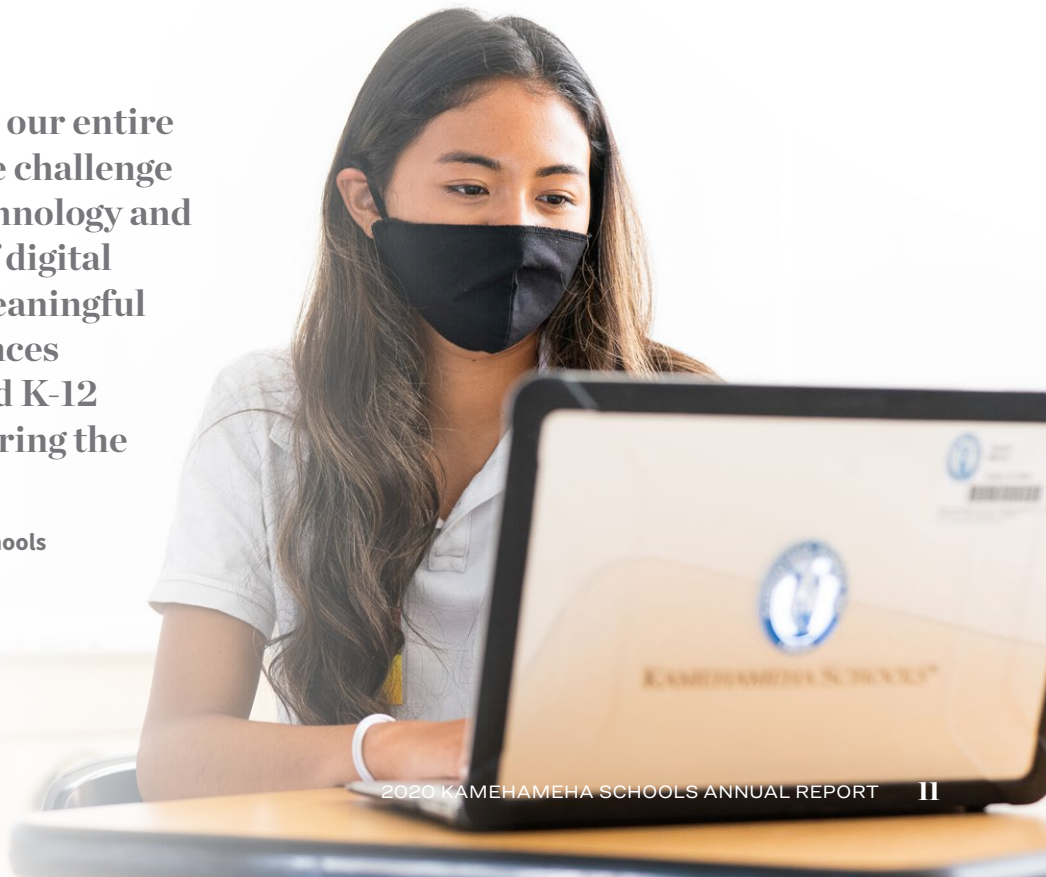
"It was amazing how our entire KS 'ohana rose to the challenge of navigating the technology and teaching demands of digital learning to create meaningful educational experiences for our preschool and K-12 campus haumāna during the pandemic," KS Executive Vice President of Administration **Darrel Hoke** said. "KS Digital will continue to evolve to meet personalized learning needs of haumāna across our pae 'āina and eventually around the globe."

KS Digital opens the door to flexible, customized learning aligned with each student's strengths, needs, and interests that will help them succeed in an increasingly interconnected world.

As this online portal expands, the vision is for KS Digital to be the first click for Native Hawaiian learners looking for on-demand access to educational opportunities to fulfill their personal goals. By increasing access to vibrant, Hawaiian culture-based content and resources, KS is harnessing the power of technology to support the next generation of 'ōiwi leaders.

"It was amazing how our entire KS 'ohana rose to the challenge of navigating the technology and teaching demands of digital learning to create meaningful educational experiences for our preschool and K-12 campus haumāna during the pandemic."

- **Darrel Hoke, Kamehameha Schools executive vice president of Administration**



Teaching outside the walls

Kumu Joel Truesdell integrates culture and technology for distance learning success

“It’s worth the investment if you’re making the experience better for the students.”

- Joel Truesdell, Kamehameha Schools Hawai’i chemistry kumu

By utilizing technology and tailoring lessons to his students, Kamehameha Schools Hawai’i chemistry kumu **Joel Truesdell** continues to make learning dynamic, interactive, and fun despite the challenges brought on by the COVID-19 pandemic.

“At first, Zoom hurt the engagement level of my class because it was hard to integrate culture,” said Truesdell, who in 2017 was awarded the National Science Teachers Association Shell Science Teaching Award, which recognizes one outstanding classroom science teacher (K-12) who has had a positive impact on his or her students, school and community through exemplary classroom science teaching.

By installing a new video system in his chemistry classroom, Truesdell created action-like movie sequences to elevate his instruction and increase engagement. He then hit another distance-learning wall.

“Another challenge with trying to integrate culture-based chemistry during COVID-19 was that we weren’t able to send chemicals home for experiments,” Truesdell said.

To overcome those challenges, Truesdell, who began teaching at KS Kapālama in 1988 and joined the Hawai’i campus in 2004, adapted to meet the needs of his haumāna, while following safety protocols by implementing Pa’akai Lab.

With Pa’akai Lab, half of Truesdell’s students are able to conduct chemical experiments in person, while the other half contributes mana’o from home.

By exploring chemical reactions in nature and reinforcing the wisdom of kūpuna, Truesdell’s students learn about the natural elements and chemical reactions involved in the production of elements such as pa’akai (sea salt), for which the lab is named.

“It took awhile to get used to the new technology, but now the teachers and kids like it,” Truesdell said. “It’s worth the investment if you’re making the experience better for the students.”






Reviving what was lost

Restoring and reviving relationships in Ka'ū

As a major landowner, Kamehameha Schools (KS) understands the immense kuleana it has to steward 'āina throughout Hawai'i.

In 2017, the State Board of Land and Natural Resources approved a Safe Harbor Agreement for KS to protect 32,280 acres of land in Ka'ū on Hawai'i Island. Jointly signed by the U.S. Fish and Wildlife Service, the State Department of Land and Natural Resources and KS, the agreement allows KS to support the conservation of threatened and endangered plant and animal species. As a result of this agreement, 30,502 native plants were planted over a span of two years in Keauhou, Ka'ū.

“Our connections to the 'āina are what make us Hawaiian and shape our identity,” said Jason Jeremiah KSK'99, Kamehameha Schools director of Natural and Cultural Ecosystems.



“Stewarding our 'āina, reviving native species and protecting our natural and cultural resources will ensure that future generations have a relationship to the native ecosystems that make us who we are.”

- Jason Jeremiah, Kamehameha Schools director of Natural and Cultural Ecosystems

Since its adoption, the agreement has supported the recovery and growth of plants and animals in Ka'ū. Three new populations of endangered plant species were located in the region along with multiple nests and goslings of native birds. In 2019, a forest birding field school certified 16 observers to identify Hawaiian birds by their sight and sound.

That same year, the Friends of Hōkūle'a and the voyaging canoe Hawai'i'iloa successfully harvested koa to replace the masts, booms and spars of Hawai'i'iloa, reviving a cultural practice that was once almost lost. To date, KS' efforts in habitat and other management practices have served to protect Hawai'i's lone native bat, seven native bird species, and 25 plant species.

Growing stewardship

Innovative management allows koa, 'iliahi to flourish

I ola ka lāhui i ke ola a me ka pono o ka 'āina a me ka lawa pono o nā kumuwaiwai. 'O ka ho'oilina 'āina o Kamehameha, 'o ka 'Āina Pauahi, ua lako i ka 364,000 'eka 'āina ma 'elima mokupuni. I kōkua i ka mālama 'ana i kēia 'āina ākea a ko'iko'i, ke ho'ākea aku nei ke Kula 'o Kamehameha i kona kuleana 'o ka mālama 'āina ma o nā papahana ho'oponopono 'āina holomua akamai.

Ke ulu mai nei 'elua papahana o ia 'ano ma ka mokupuni 'o Hawai'i. Ho'okumu 'ia nā papahana a 'elua i ka makahiki 2019 a he kāko'o i ko ke Kula 'o Kamehameha mālama 'ana i nā kaukani 'eka 'āina ma ka moku 'o Kona, a ua ho'omohala 'ia e ho'ohuli ai i ke emi 'ana o ka 'āina hānai holoholona i ka 'ohi waewae 'ia o ke koa a me ka 'iliahi me ka ho'opukapuka hou i ka ho'oulu nahele.

The well-being of the lāhui relies on healthy, intact landscapes and abundant resources. The Kamehameha Schools' (KS) land legacy – 'Āina Pauahi – is comprised of 364,000 acres across five islands. To help mālama this vast and vital land base, Kamehameha Schools is broadening the reach of its stewardship kuleana through innovative land management models.

On Hawai'i Island, two such management models are taking root. Both were established in 2019 and support KS' stewardship of thousands of acres of land located in the moku (district) of Kona, and designed to reverse the decline of former pasture lands through the selective harvest of koa and 'iliahi (Hawaiian sandalwood) and to reinvest proceeds into reforestation.

“If we could obtain the knowledge we have about 'iliahi, like how we know about koa, that would be a game-changer. We've got a long way to go, but the future is looking good. I am confident that everything we are doing now will set up the next generation for success.”

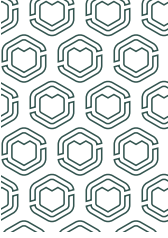
- Kamakani Dancil, Kamehameha Schools land asset manager

'O ka mua ka hana pū 'ana me Paniolo Tonewoods, he ku'ikahi ma waena o Taylor Guitars, he alaka'i 'oihana kāpili kīkā, a me Pacific Rim Tonewoods, he hui olopopa no'eau. Hana pū ua mau hui nei e ho'olako i ka lā'au koa i 'ohi pono 'ia e kū'ai 'ia no ke kāpili kīkā 'ana. I pāna'i i ka ho'oulu hou 'ana i 1,300 'eka 'āina o ka 'āina KS i Hōnaunau, 'ae 'ia akula 'o Paniolo Tonewoods e 'ohi i wahi lā'au koa popopo me ke kaupalena 'ia. Aia nō a olo 'ia, e ka'a ana ka uku o ka hana mālama 'āina i ka waiwai o ka lā'au 'ohi 'ia.

I ka makahiki 2020 i ho'okō pono ai 'o Paniolo Tonewoods, i kōkua 'ia e ka hui alaka'i ho'oulu nahele 'o Forest Solutions, i ka māhele 'ohi o ka 'aelike mālama 'āina, i loa'a maila ma kahi o ka 100 kumu koa. I ka makahiki 2022 e ho'omaka ai ka māhele ho'oulu nahele.

The first is a partnership with Paniolo Tonewoods, a collaboration between Taylor Guitars, a leading guitar manufacturer, and Pacific Rim Tonewoods, a specialty sawmill. Together, they work to bring ethically sourced koa wood to market for the construction of acoustic guitars. In exchange for restoring 1,300 acres of KS land located in Hōnaunau, Paniolo Tonewoods was permitted to harvest limited quantities of degraded koa. Once processed, the value of the harvested wood will pay for the costs of conservation work.

In 2020, Paniolo Tonewoods, with the help of local forestry leader Forest Solutions, successfully completed the harvesting phase of the stewardship contract, which yielded approximately 100 koa trees. The restoration phase will begin in 2022.



Ke kuhi nei ke Kula 'o Kamehameha i ka ho'olilo 'ana aku he \$1,000,000 e waele i nā lā'au haipilikia a e kanu hou i ke koa, me ka ho'omoe pū 'ia o nā kōā nahele a me nā pā kūpale. 'Oia e kia pono ana nā hana ho'oulu nahele i ke koa, pōmaika'i ke kaiaola nui o nā lā'au 'ōiwi a me nā lāhui mea ola i ia hana.

'O ka papahana 'elua, he ku'ikahi ia me Hāloa 'Āina, he hui 'ohana 'ōiwi Hawai'i e kia pono ana i ka ho'ōla i nā 'āina ulu lā'au o Kona. Olo 'o Hāloa 'Āina i nā kumu 'iliahi make a 'ane make ho'i, a ho'oka'awale 'ia ka waiwai loa'a o kā lākou wai 'aila lā'au 'a'ala no ka ho'olako 'ana i ke kālā i nā hana ho'oulu nahele. Ua pilikia nā 'āina ulu lā'au o ka mokupuni 'o Hawai'i no 100 a 'oi makahiki i ka 'ai 'ia e ka pipi. 'O ko Hāloa 'Āina pahuhopu nō ia 'o ka ulu hou 'ana o ka ulu lā'au e like ho'i me kona kūlana ma mua o ka hānai pipi.

I ka makahiki 2020 i 'ae 'ia ai 'o Hāloa 'Āina e waele i ka 'iliahi make a 'ane make mai 1,000 'eka 'āina o KS. Ua 'ohi 'ia, olo 'ia, a puhi 'ia he 3,800 kilokalame lā'au i ka wai 'aila kū'ai 'ia. Ua ho'olilo 'ia kekahi hapa o ka waiwai loa'a no ke kanu 'ana i 1,500 kawowo māmane, 'a'ali'i, 'iliahi, a koa ho'i - he mau lāhui lā'au 'ano nui i nā kaianoho ulu lā'au.

He ho'omaka ho'olana mana'o kēia no kahi 'oihana 'u'uku a pa'a mau nō na'e paha 'o ka ho'oulu 'iliahi, ka waiwai ho'olilo mua loa o Hawai'i. Aloha 'ino ka 'ohi nui 'ia a 'ane hala pohe i nā makahiki mua o nā makahiki 1800, a hiolo ihola ka 'oihana. Lana na'e ka mana'o o **Kamakani Dancil**, 'o ia ka manakia waiwai 'āina, i ka holomua o kēia papahana hou: "Aia a like ka pa'a o ka 'ike iā kākou no ka 'iliahi, e like me ka nui o ko kākou 'ike no ke koa, he holomua maoli nō ia. He loa ka helena, akā, lāna ka mana'o ke nānā a'e i mua. Mana'o'i'o au e lanakila ana kekahi hanauna aku i kā mākou e pa'u nei."

KS projects spending \$1 million to remove invasive species and replant koa, and install firebreaks and protective fencing. Although the forestry management efforts are explicitly targeted at koa, the process benefits the entire ecosystem of native plants and animal species.

The second management model is a partnership with Hāloa 'Āina, a family-owned Native Hawaiian organization dedicated to restoring Kona's native dryland forests. Hāloa 'Āina processes dead and dying 'iliahi trees and uses the sale of their fragrant essential oil byproduct to fund reforestation efforts. Hawai'i Island's dryland forests have suffered from more than a century of cattle grazing. Hāloa 'Āina's goal is to return them to their pre-ranching state.

In 2020, Hāloa 'Āina was permitted to remove dead and dying 'iliahi from 1,000 acres of KS land. More than 3,800 kilograms of wood were harvested, processed, and distilled into a marketable oil. A percentage of the proceeds were then used to plant 1,500 seedlings of māmane, 'a'ali'i, 'iliahi, and koa—all critical plant species in our native dryland forest habitats.

It's a promising new start for a small but sustainable industry in 'iliahi, Hawai'i's first true export. Sadly, it was harvested to near extinction in the early 1800s, and the trade collapsed. However, the success of this new land management model has **Kamakani Dancil**, a KS land asset manager, feeling optimistic: "If we could obtain the knowledge we have about 'iliahi, like how we know about koa, that would be a game-changer," said Dancil. We've got a long way to go, but the future is looking good. I am confident that everything we are doing now will set up the next generation for success."

MEANINGFUL IMPACT

2019-2020 Pauahi Foundation Scholarship Recipients

Leiana Apo
Ali'i Chang Scholarship

Tehani Baculpo
Makaloa Scholarship

Elijah Davidson¹⁸
Makaloa Scholarship

Kawohikukapulani Duvauchelle
Paul Pua'a 'Ohana, Paul Moses Murray & Malia Murray Grant

Arileigh Kaapana²⁰
Mary Atherton Richards Scholarship

Zachary Lorenzo²⁰
Tennyson Keolalani Tom Scholarship

Mikiala Ng²⁰
Ula Baker Sheecha Scholarship

Noah Thompson²⁰
Herbert Kealoha Keppeler Scholarship

Natalie Rose Wilcox²⁰
Odell & Hastings Slagel Named Endowment Scholarship



Leading by example

Kamehameha Schools Kapālama graduate, Tehani Malterre elected to Neighborhood Board

‘O iai ‘o ia e noke ana i ka ho‘okō i kāna hana kula haumāna Papa 12 ma ke Kula ‘o Kamehameha ma Kapālama i ke kau kula kupulau 2019, pū‘iwa ihola ‘o **Tehani Malterre KSK’19** i ka loa‘a ‘ana o kekahi leka uila iā ia mai ke Po‘o Kula, maiā Kauka Taran Chun KSK’95 mai.

Ua paipai ka polo‘ai ho‘olale a ke Po‘o Kula i nā haumāna i piha iā lākou he 18 a ‘oi makahiki e no‘ono‘o iho i ka holo moho ‘ana no nā papa alaka‘i kaiahome o lākou. Ma kona ‘ano he alaka‘i ‘ōiwi ‘ōpio, ho‘oholo ihola ‘o Malterre e ka‘i aku ma ia ala no ke kōkua miki‘ala ‘ana i kona ‘ohana a me kona kaiaulu, me ke a‘o pū no nā nīnau ko‘iko‘i e pā ai kona ‘āina Ko‘olau o O‘ahu.

“He mea nui kēia ia‘u, a hau‘oli nō ho‘i au i ka ‘auamo ‘ana i ua kuleana lā ‘oiāi au e kū ‘elele ana no ko‘u kaiaulu a me ko‘u ‘ohana,” i ‘ōlelo ai ‘o Malterre. “Ua paipai ‘o Kauka Chun iā mākou e holo moho, a ua mana‘o au he wā maika‘i ia e komo ai i ka ho‘oholomua pono ‘ana. He makemake ko‘u e ho‘ohālike aku i ka pono a na‘i ho‘i i ka pono o ka lāhui.”

As she worked diligently to finish her academic workload as a senior at Kamehameha Schools Kapālama during the spring of 2019, **Tehani Malterre KSK’19** was surprised to receive an email from Po‘o Kula **Dr. Taran Chun KSK’95**.

The call to action from the head of school encouraged students who were at least 18 years old to consider running for positions on their local neighborhood boards. As a young ‘ōiwi leader, Malterre decided to pursue the opportunity as a proactive way to help her ‘ohana and surrounding community and learn more about the important issues impacting her home area of East O‘ahu.

“It’s really important for me, and it’s a big responsibility that I’m really looking forward to taking on as I represent the community and my family,” Malterre said. “Dr. Chun encouraged us to run, and I thought it was a really good opportunity to get involved and make positive changes. I hope to set a good example and do what is right for our lāhui.”

Ma mua o ka puka kula ‘ana, paipai holo moho akula ‘o Malterre no kekahi noho ma ka Papa Alaka‘i Kaiahome o Hawai‘i Kai Helu 1, Māhele 9, a koho ‘ia ‘o ia ‘oiai ‘o ia e ho‘okō ana i kona kula ‘ana. ‘O ia lawelawe maka‘āinana nei - e noho haumāna nei ‘ānō ma ka papahana akeakamai kaiapuni ma ke Kulanui ‘o Hawai‘i ma Mānoa - kekahi o nā moho he 553 i holo no ka papa alaka‘i kaiahome i ia kau koho.

“Ha‘aheo au iā Tehani i kona lilo ‘ana ‘o ia kekahi o nā luna koho ‘ia ‘ōpio loa ma Honolulu,” wahi a ka Luna Ho‘omalua o ka ‘Aha Kalana o Honolulu ‘o **Tommy Waters KSK’83**. “Kū ‘o ia no ka hanauna hou ‘o ka po‘e ‘ōpio aloha kaiaulu, e kālai ana i ka wā e hiki mai ana o ko mākou kūlanakauhale. Ma ko‘u ‘ano he pukana o ke Kula ‘o Kamehameha, paulele au i ka ‘auamo mau ‘ia o ka ho‘oilina a ke Ali‘i Pauahi i nā hana a nā alaka‘i ‘ōpio e like me Tehani.”

‘O ka ‘ōnaehana papa alaka‘i kaiaulu o O‘ahu kekahi o nā ‘ōnaehana akamai a ho‘okō nui ma ‘Amelika Hui Pū ‘Ia, a ua ho‘okumu ‘ia akula i mea e ho‘onui a‘e ai i ke komo o ke kaiaulu i ke ka‘inahana ho‘oholo o ke aupuni. Mai ka makahiki 1975 mai, ahua nā papa alaka‘i kaiahome ma ka ‘ōnaehana e ho‘oulu ana i ka hana puamau‘u ma ke aupuni, e ho‘oponopono ana i nā nīnau a me nā hopohopo e pā ai nā kaiaulu kūloko, a e kauleo ana i ka meia a me nā hoa ‘aha kalana.

“She represents a new generation of civic-minded young adults who will shape the future of our city.”

- Tommy Waters, Honolulu City Council chair

“Ha‘aheo au i ka nānā ‘ana i nā hanauna hou o nā pukana Kamehameha e waele ana i nā ala hou,” i ‘ōlelo ai ‘o Chun. “‘O ko Tehani kūpa‘a naue ‘ole i ka hāpai ‘ana i kona kaiaulu, he ana ho‘ohālike ia e ho‘opa‘a ‘ia e nā haumāna ke puka akula lākou mai ke kula aku. E luana ana mākou i kona ho‘ohuli pono ‘ana i ka moku‘āina, ke aupuni, a me ke ao.”

Ma ke ‘ano he hoa papa alaka‘i kaiahome, komo ‘o Malterre i nā hana ho‘opa‘a a kālailai like ‘ole, ‘o ka pahana ho‘oulu kumu waiwai ‘oe, ‘o ke kālai ‘āina ‘oe, ‘o nā papahana ho‘ona‘auao ‘oe, a pēlā pū nō ho‘i me nā ka‘inahana ho‘oholo o ke aupuni e pa‘a a hāpai ‘ia ai nā pahuhopu, nā mana‘o nui, a me nā makakoho o kona kaiaulu.

Prior to graduating, Malterre campaigned and ran for a seat on the Hawai‘i Kai Neighborhood Board No. 1, Subdistrict 9, and was elected while finishing her studies. The public servant, who is currently studying environmental science at the University of Hawai‘i at Mānoa, was one of 553 candidates who participated in the neighborhood board election process during that election cycle.

“I am proud of Tehani for her service as one of the youngest elected officials in Honolulu,” said Honolulu City Council Chair **Tommy Waters KSK’83**. “She represents a new generation of civic-minded young adults who will shape the future of our city. As a Kamehameha Schools graduate myself, I cannot help but think that the legacy of Princess Pauahi Bishop continues to be carried forward by the efforts of young servant leaders like Tehani.”

O‘ahu’s neighborhood board system is one of the most sophisticated and impactful in the United States, and was created to increase community participation in the decision-making process of government. Since 1975, neighborhood boards have thrived in a system that channels grassroots participation in government, addresses the issues and concerns affecting local communities, and advises the mayor and councilmembers.



“It’s humbling to watch the next generation of Kamehameha Schools alumni blaze new trails,” Chun said. “Tehani’s dedication to make a meaningful impact in her community is a blueprint we want each of our graduates to leave our halls with. We look forward to watching her create the kind of change our state, the nation and the world will need.”

As a neighborhood board member, Malterre participates in activities ranging from the study and review of capital improvement projects and zoning concerns, to educational programs and governmental decision-making processes that help solidify and elevate the goals, objectives, and priorities of her community.



Let them lead

Student leaders demonstrate resiliency in face of pandemic

Although the hills of Kapālama were left vacant of students in 2020, leadership was still being fostered on campus.

“The leadership that we have coming out of these kids is phenomenal,” Kamehameha Schools Kapālama Director of Student Leadership **Andrew Lai KSK’89** said. “The hill is breathing again. She is happy to have our haumāna back where they belong.”

Student Leadership is a yearlong course for all members of student government to develop essential leadership skills through event planning and execution. From weighing in on campus policies, to promoting community and civic engagement – everything is led by students.

Despite the challenges presented by the COVID-19 pandemic, student leaders found innovative and safe ways to celebrate their accomplishments and bring their classes together, from a virtual spirit week to a drive-in movie night and a Christmas drive-thru light show. Lai is confident that the resilience shown by these students pushed their peers to overcome the challenges brought on by the pandemic.

When students made their way back to campus late in 2020, Lai marveled at the energy he felt from their presence.

MEANINGFUL IMPACT

2019-2020 Pauahi Foundation Scholarship Recipients

Keely Ah Loo-Takaki²⁰

*Ka ‘Ōlelo Hawai‘i o Kamehameha Scholarship
Lena Kaulumau Machado Haku Mele Fund
Winona Beamer Scholarship*

Hualalai Ahakuelo-Kepa

Holomua Scholarship

Taecia Akana¹⁷

*Sarah Keli‘ilolena Lum Konia Nakoa
Scholarship*

Hulali Alford

*Hartwell Hewahewaokalani Lee Loy, Sr.
Scholarship
Kamehameha Schools Class of 1963
Scholarship*

Kaitlyn Anderson²⁰

Frank & Ruth Midkiff Scholarship

Kauakeakipunikawekiu Awana²⁰

Douglas and Sandra Akina Scholarship

Micah Bradley²⁰

David Lorch Music Scholarship

Kiliohu Bulusan

*Homer David Kahilialau and Thelma Mabara
Burge, Sr. Scholarship
Makuakāne Inspirational Educator
Scholarship*

Lora-Anna Cambra

*Kamehameha Schools Class of 1967 “Ka Lei o
Kaiona” Scholarship
U‘ilani Stender Scholarship*

Jordynne Ching¹⁸

Makaloa Scholarship

Ramzen Coakley
*Gladys Kamakakūokalani 'Ainoa Brandt
Scholarship
Pauahi Scholarship*

Kanaloa Ducosin
*Kamehameha Schools Alumni Association –
Maui Region Scholarship
Kamehameha Schools Association of Maui
Scholarship*

Joanne Farias²⁰
Pauahi Scholarship

Makena Fernandez
Joseph David Ahuna Scholarship

Tristan Fleming-Nazara
*Dwayne “Nakila” Steele Scholarship
Kamehameha Schools Class of 1995 Ka Ua
Kipu‘upu‘u Scholarship*

Alan Craig Gibby
Makaloa Scholarship

Kula Olena Goldstein
David and Julia Desha Scholarship

Vyas Hale
*Kamehameha Schools Class of 1962
Scholarship
Kekuna‘ai‘ali‘i Scholarship*

Hiilei Hanohano²⁰
Waipa Nishimura Memorial Scholarship

Kenneth Ho⁹⁸
*Allen A. Bailey Scholarship
Gladys Kamakakūokalani 'Ainoa Brandt
Scholarship*

Holeka Inaba¹²
*Allen A. Bailey Scholarship
Gladys Kamakakūokalani 'Ainoa Brandt
Scholarship
Kunuiākea Scholarship*

Alisha Kaluhiokalani
*Charles S. Iwata, Jr. Memorial Annual
Scholarship*

Kourtney Christen Kawano¹⁴
*Violet K. '32 & Henry T. Hughes, Jr.
Scholarship*

Hyrum Kim
Johnny Pineapple Scholarship

Asia Kimura¹⁸
*Homer David Kahilialau and Thelma Mabara
Burge, Sr. Scholarship
Makuakāne Inspirational Educator
Scholarship*

Nalani Klopfenstein²⁰
Johnny Pineapple Scholarship

Kaulakauikeaokea Krug
*Irmgard Farden Aluli Scholarship
Kunuiākea Scholarship*

Jasmyn Lave
*Kamehameha Schools Class of 1975
Scholarship*

Malia Lawcock²⁰
*Kamehameha Schools Hawai'i Parent
Teacher Organization Scholarship*

Pualei Lima¹¹
*Gladys Kamakakūokalani 'Ainoa Brandt
Scholarship
Myron & Laura Thompson Scholarship*

Timothy-John Lorenzo²⁰
Edwin P. Murray Scholarship

Nicholas Lum¹²
*Makuakāne Inspirational Educator
Scholarship*

Leialii Makekau-Whittaker
*Makuakāne Inspirational Educator
Scholarship*

Emily Medeiros¹⁶
Makaloa Scholarship

Skye Murakami²⁰
Desha-Mulholland Scholarship

Sedona-Ariz Nelson²⁰
*Kamehameha Schools Kapālama
Association of Teachers and Parents Hō'ihi
Aku, Hō'ihi Mai Scholarship*

Pohaiikananikamahina Patterson⁰⁷
Joseph Nāwāhi Scholarship

Daniel Pavao
*Gladys Kamakakūokalani 'Ainoa Brandt
Scholarship
Kamehameha Schools Class of 1983
Scholarship*

**Kapuaoluolumaikalani Peleiholani-
Blankenfeld²⁰**
*Kamehameha Schools Hawai'i Parent
Teacher Organization Scholarship*

Patricia Plunkett
*Gladys Kamakakūokalani 'Ainoa Brandt
Scholarship
Kahaleku'iināihe Scholarship*

Jasmine Quintua-Salavea²⁰
*Harold Turney & Dorothy Gillett Music
Scholarship
Zillah Young Memorial Scholarship*

Samantha Rapoza¹⁸
Myron & Laura Thompson Scholarship

Leroy Reed
*Kamehameha Schools Class of 1974
Scholarship*

Keolamaupono Sagario²⁰
Charles Cockett 'Ohana Scholarship

Aldomonick Samuseva
*Ho'omāka'ika'i Named Endowment
Scholarship
Kamehameha Schools Class of 1975
Scholarship*

Briane Souki²⁰
Pai'ea Kāne/Wahine Scholarship

Keau Souza²⁰
Makaloa Scholarship

Brandi Tabisola
*Kamehameha Schools Class of 1967 “Ka Lei o
Kaiona” Scholarship*

Jordan Taboniar¹⁵
*Gladys Kamakakūokalani 'Ainoa Brandt
Scholarship*

Isaiah Toi
Makaloa Scholarship

Bruce Torres Fischer
Joseph Nāwāhi Scholarship

Kapri Tulang-De Silva¹⁸
*Charles “Chuck” Craig and Fred Rudolph
Named Endowment Scholarship*

Kiera-Lynn Viela¹⁷
*Kamehameha Schools Association of Maui
Scholarship*

Elena-Marie Waianuheā²⁰
Edwin P. Murray Scholarship

Klaudia Watson²⁰
*Francelia Stillwell Sportsmanship
Scholarship
Kamehameha Schools Class of 1971 “Get
Chance” Scholarship*

Austin Wilson²⁰
*Kamehameha Schools Hawai'i Parent
Teacher Organization Scholarship*

Iese Wilson
Edwin Mahiai Copp Beamer Scholarship

Kanoe Wilson⁹¹
*Gladys Kamakakūokalani 'Ainoa Brandt
Scholarship*

Maile Wong¹⁶
Gail and Allan Fujimoto Scholarship



Resources & Impacts

JULY 1, 2019 THRU JUNE 30, 2020



Kamehameha Schools is a private charitable educational trust endowed by the will of Hawaiian princess, Bernice Pauahi Bishop (1831-1884), the great-granddaughter and last direct descendant of King Kamehameha I.

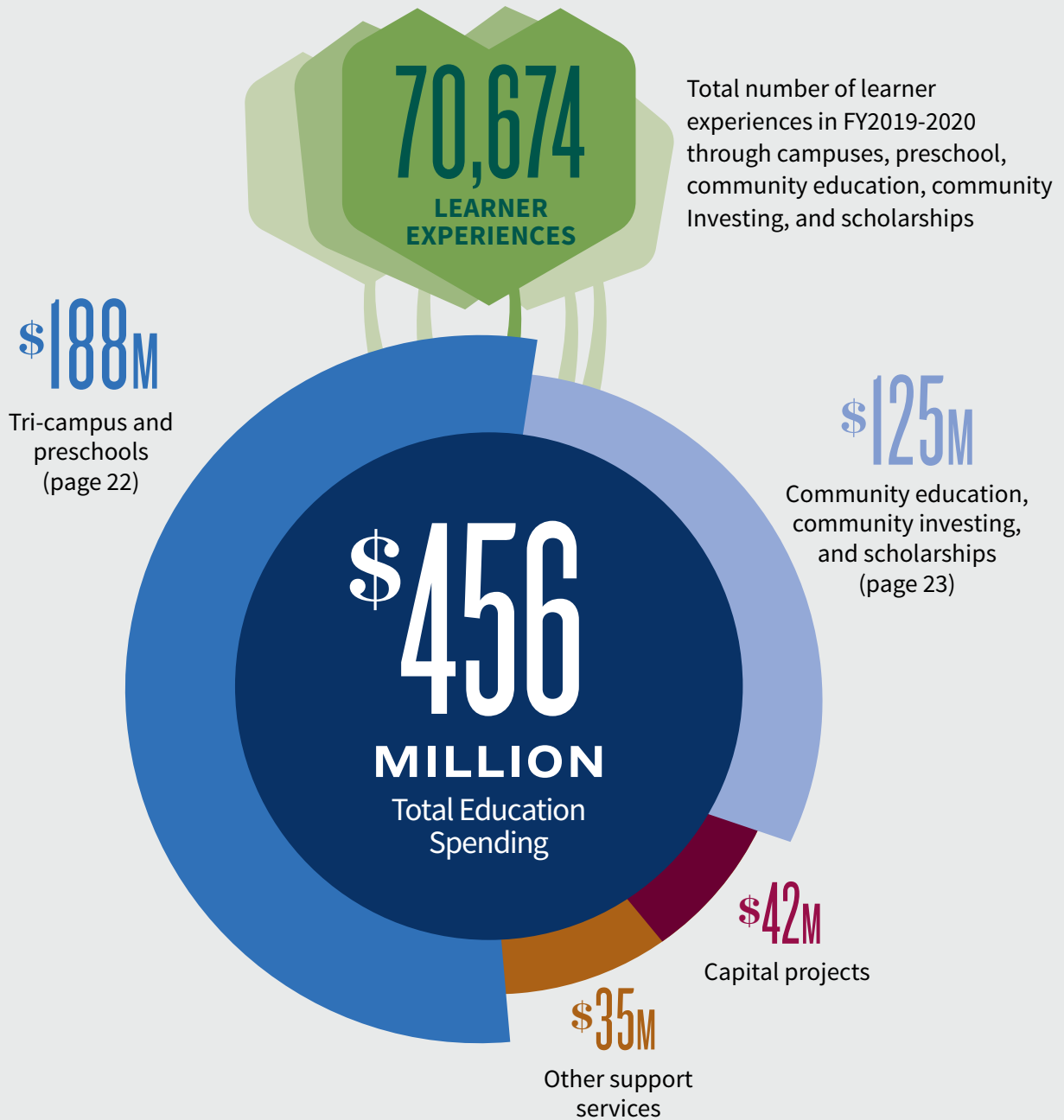
During her lifetime, Princess Pauahi witnessed the rapid decline of the Native Hawaiian population. She knew that education would be key to the survival of her people, and in an enduring act of aloha, she bequeathed to them a precious gift — 375,000 acres of ancestral lands of the royal Kamehameha family and instructions to her trustees that the “rest, residue and remainder of my estate” be used to establish the Kamehameha Schools.

Today, Ke Ali'i Pauahi's legacy continues to advance her desire to restore her people through education.



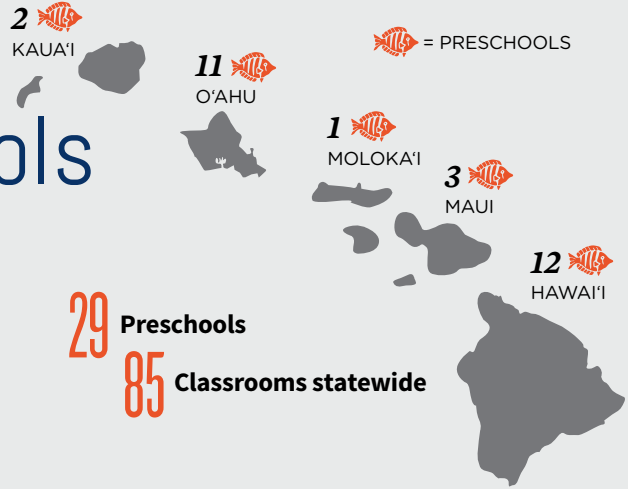
Educational Spending

During fiscal year 2019-2020, Kamehameha Schools spent \$456 million from its endowment on education, representing 4% of the five-year average market value of the endowment. KS' spending policy targets a sustainable 4% of the five-year average market value of the endowment to provide for stability and financial equilibrium over time. In close alignment with the policy, the average spending rate for the past five years was 3.8%.



1,618
LEARNERS SERVED

Preschools



29 Preschools
85 Classrooms statewide

\$36.5
MILLION
Spent on preschool education

\$187.7
MILLION
Spent on K-12 learners on three campuses

\$32.7
MILLION
Spent on financial aid

5,431
LEARNERS SERVED



5,695
LEARNERS SERVED

Campuses

Campus	Enrolled	Graduated
Kapālama Campus	3,210	436
Hawai'i Campus	1,147	139
Maui Campus	1,074	108

683
GRADUATES

Financial Aid

\$4.4M

\$28.3M

Preschools

K-12

An average of **81%** of campus learners receive some form of financial assistance



Scholarships



PAUAHI KEIKI SCHOLARSHIPS



were awarded a total of
\$17.7 MILLION
to attend other private
preschools

KIPONA SCHOLARSHIPS



were awarded a total of
\$5.6 MILLION
to attend other private
K-12 schools

POST-HIGH SCHOLARSHIPS



were awarded a total of
\$14.9 MILLION
to attend college



Community Education & Engagement

Learners are served from the **Kūamahi Community Education** Division

Community Investing

103 organizations funded through community investing efforts.





MEANINGFUL IMPACT

2019-2020 Pauahi Foundation Scholarship Recipients

Maleia Aguano^{'20}

Kamehameha Schools Association of Kaua'i Scholarship

Kalia Agustin^{'20}

*Kamehameha Schools Hawai'i Parent Teacher Organization Scholarship
Tauati 'Ohana Scholarship*

Zane Aikau-Osurman

David and Julia Desha Scholarship

Kamaile Aipa^{'17}

*David and Julia Desha Scholarship
Denis Wong & Associates Scholarship*

Hannah Aiwohi^{'20}

*David and Julia Desha Scholarship
Kamehameha Schools Maui Parent Teacher Student Organization 'A'apueo Scholarship*

Blaze Akana^{'20}

Kamehameha Schools Kapālama Association of Teachers and Parents Hō'ihi Aku, Hō'ihi Mai Scholarship

Abigail Andrade^{'20}

Kamehameha Schools Hawai'i Parent Teacher Organization Scholarship

Kiana Aniu^{'20}

Kamehameha Schools Hawai'i Parent Teacher Organization Scholarship

Shaila Apele

Kunuiākea Scholarship

Caitlin Arakaki^{'20}

Christine Alicata/Daisy Bell Memorial Scholarship

Gabriel Arcas^{'20}

Pauahi Scholarship

Kaipokai Arita^{'20}

Theodore Vierra Scholarship

Huntyr Atkins^{'20}

Mr. John Riggle Scholarship

Kala'imaikala Aukai^{'16}

*George Hi'ilani Mills Scholarship
Kunuiākea Scholarship*

Chace Baliaris^{'20}

*John A. and Georgia J. Meyer Scholarship
Kamehameha Schools Association of Kaua'i Scholarship*

Zion Basque^{'17}

Denis Wong & Associates Scholarship

Tiani Bello^{'20}

*Kamehameha Schools Hawai'i Parent Teacher Organization Scholarship
Mary Atherton Richards Scholarship*

Elijah Bernardo-Flores^{'17}

Joseph David Ahuna Scholarship

Faith Bonacorsi^{'20}

*Mary Atherton Richards Scholarship
Pauahi Scholarship*

Gilia Brede^{'18}

Makaloa Scholarship

Krystian Brown^{'13}

George Hi'ilani Mills Scholarship

Billie-Ann Bruce

*Anne H. Myers Scholarship
U'ilani Stender Scholarship*

Travis Chai Andrade^{'20}

*Kamehameha Schools Hawai'i Parent Teacher Organization Scholarship
Pai'ea Kāne/Wahine Scholarship
Pauahi Scholarship*

Xavier Chai-Joyner

Kamehameha Schools Class of 1960 Scholarship

Kylie Choo

Eli D. Panee, Sr., and Aileen E. Panee I Mua Scholarship

Jaime Chun^{'08}

*Lance (KS'83) & Andrea Hussey (KS'83) Leong Scholarship
William S. Richardson Commemorative Scholarship*

Jennyrose Coney^{'20}

*Kamehameha Schools Class of 1954 Nā Kanalimakūmāhā Scholarship
Mary Atherton Richards Scholarship*



Ashanti Corotan²⁰
Makaloa Scholarship

Taylor Cox²⁰
John A. and Georgia J. Meyer Scholarship

Maia Damazo Garcia²⁰
Tayler Nanea Pangan-Fergerstrom Memorial
Scholarship

Lilia Davis²⁰
Mary Atherton Richards Scholarship

Makanilealea Davis
Paul Pua'a 'Ohana, Paul Moses Murray &
Malia Murray Grant

Kiani Dayton²⁰
Kamehameha Schools Hawai'i Parent
Teacher Organization Scholarship

Tatiana De La Cruz¹⁶
Makaloa Scholarship

Chelia Decoite-Sanchez
Kamehameha Schools Class of 1950
Scholarship
Kamehameha Schools Class of 1954 Nā
Kanalimakūmāhā Scholarship

Mahealani Deenik²⁰
Wallace & Barbara Ka'awaloa Scholarship

Teani Defries²⁰
De Witt Wallace Scholarship

Taylor Demotta
Kamehameha Schools Class of 1970
Scholarship

Frances Diamond¹⁷
Kunuiākea Scholarship

Hiileinani Dikilato²⁰
Kamehameha Schools Class of 1957
Scholarship

Jonah Domingo²⁰
Helen Desha Beamer Scholarship

Joy Domingo-Kameenui²⁰
Mary Atherton Richards Scholarship

Mathew Dye
Kamehameha Schools Class of 1956
Scholarship
Mahi'ai Scholarship

Alema Ebana²⁰
Frank & Ruth Midkiff Scholarship

Isabelle Eli
Kamehameha Schools Class of 1970
Scholarship

Sierra Enoke-Wilson
Nanea Scholarship

Bronson Espania²⁰
Pauahi Scholarship

Alayna Evans²⁰
Mary Atherton Richards Scholarship

Terina Faagau¹⁴
Kamehameha Schools Alumni Association –
O'ahu Region Scholarship
William S. Richardson Commemorative
Scholarship

Jade Frank²⁰
Mary Atherton Richards Scholarship

Mckenzie-James Fuata¹⁷
David A. Mortensen (KS'71) D.A.M
Scholarship

Kuuleihua Funn
Kamehameha Schools Class of 1970
Scholarship

Pohakukumupaakaunaoe Galdeira²⁰
Makaloa Scholarship

Chaslynn-Nicole Gaspar
U'ilani Stender Scholarship

Teiana Gonsalves²⁰
De Witt Wallace Scholarship
Dr. Pauline Frederick Scholarship

Joshua Grant¹⁹
Kamehameha Schools Maui Parent Teacher
Student Organization 'A'apueo Scholarship

Salesi Haunga²⁰
Desha-Mulholland Scholarship

Kalamakuikeao Heine²⁰
Douglas K.K. Chung Memorial Scholarship

Jesika Hernandez
Kamehameha Schools Class of 2005
Scholarship

Liliuokalani Hiraide⁰⁹
George Hi'ilani Mills Scholarship
Kamehameha Schools Class of 1965
Scholarship
Kamehameha Schools Maui Parent Teacher
Student Organization 'A'apueo Scholarship

Shelby Hom
Kamehameha Schools Class of 1961
Scholarship

Zayden Hora²⁰
Frank & Ruth Midkiff Scholarship
Kamehameha Schools Hawai'i Parent
Teacher Organization Scholarship

Chance Ingalls
Hawaii Lodging & Tourism Association Don
Ho Legacy Named Endowment Scholarship

Rydge Ishii²⁰
Kamehameha Schools Hawai'i Parent
Teacher Organization Scholarship

Aryal Jardines
Dolly and Ross Wert Named Endowment
Scholarship
Kamehameha Schools Class of 1970
Scholarship



Kailanamalie Jensen²⁰
Kamehameha Schools Association of Maui
Scholarship

Taj Joaquin²⁰
Lee Ann DeLima Scholarship
Mary Atherton Richards Scholarship

Devin Jose¹⁹
Joseph A. Sowa Scholarship

Westin Joseph
David and Julia Desha Scholarship

Kahuwaialii Kaapana²⁰
*Kamehameha Schools Hawai'i Parent
Teacher Organization Scholarship
Mary Atherton Richards Scholarship*

Kiloaulani Kaawa-Gonzales
*Bruce T. and Jackie Mahi Erickson
Scholarship
Elizabeth Ku'ulei Bell Moloka'i Education
Scholarship
Kamehameha Schools Association of
Teachers and Parents Moloka'i "Elua"
Scholarship
Trudi and Hiram de Fries Educational
Scholarship*

Chase Kane²⁰
*Makaloa Scholarship
Pauahi Scholarship*

Heather Kane-Mahiai
*Kamehameha Schools Class of 1952 "Na
Hoaloha O Kamehameha" Scholarship
Kamehameha Schools Class of 1994 Named
Endowment Scholarship*

Luke Kaniho²⁰
*Kamehameha Schools Hawai'i Parent
Teacher Organization Scholarship*

Isaiah Kaohe
*James Bacon, KS '71 "Little Bacon Urban
Achievers" Scholarship*

Kaeo Kruse¹⁶
Kunuiākea Scholarship

Kanani Keliikoa²⁰
Admiral Kihune Scholarship

Katelynn Kubo¹⁶
George Hi'ilani Mills Scholarship

Regina Kuhia¹⁵
*Ashley Meleana Joy Scholarship
George Hi'ilani Mills Scholarship
Kamehameha Schools Association of Maui
Scholarship*

Landen Kukahiwa²⁰
*Mary Atherton Richards Scholarship
Pauahi Scholarship*

Ciera Lasconia¹⁷
Isaac and Mary Harbottle Scholarship

Sean Lau
T.C. Yim Named Endowment Scholarship

Ethan Lee¹⁸
*Kamehameha Schools "Nā Hoaloha" '86
Named Endowment Scholarship*

Kobe Lilio²⁰
Lee Ann DeLima Scholarship

Keaomalalama Liu²⁰
Mary Atherton Richards Scholarship

Jayden Liu²⁰
*Kamehameha Schools Class of 1961
Scholarship*

Sean-Zacharry Lorenzo²⁰
Wallace & Barbara Ka'awaloa Scholarship

Josiah Loving
*Kamehameha Schools Class of 1960
Scholarship
Kekuna'ai'ali'i Scholarship*

Lisa Lowe
Denis Wong & Associates Scholarship

Tehani Louis-Perkins¹⁴
*Joseph Nāwāhi Scholarship
Kamehameha Schools Class of 1996 Named
Endowment Scholarship
William S. Richardson Commemorative
Scholarship*

Jade Lum²⁰
Dorothy Martin Scholarship

Mahina Maii
*Kamehameha Schools Kapalama Class of
2006 Named Endowment Scholarship*

Shaece Mar¹⁶
David and Julia Desha Scholarship



Ariana Kahalioumi-Santos²⁰
Mary Atherton Richards Scholarship

Ikona Kahana-Sanchez
*Kalino Foundation Need-Based Scholarship
Kamehameha Schools Class of 1974
Scholarship*

Taisamasama Kaiminaauao-Eteuati²⁰
*David Kalani Goldstein, KS '70 Scholarship
Harold Turney & Dorothy Gillett Music
Scholarship
Kamehameha Schools Association of Kaua'i
Scholarship
Kamehameha Schools Class of 1963
Scholarship
Keola & Kapono Beamer Scholarship
Pono & Louise Beamer Scholarship
Theodore Richards Scholarship*

Madison Kamakana²⁰
Mary Atherton Richards Scholarship

Jaden Kapali²⁰
*Kamehameha Schools Association of Kaua'i
Scholarship*

Lauren Kapono
*Kamehameha Schools Class of 1956
Scholarship*

Jesus Kawaiaea-Benitez
*Kamehameha Schools Class of 1952 "Na
Hoaloha O Kamehameha" Scholarship*

Teva Kealoha Meyer¹⁸
*Kamehameha Schools Alumni Association -
O'ahu Region Scholarship*

Kaeo Kekumano²⁰
*De Witt Wallace Scholarship
Pauahi Scholarship
Warren Nakupuna Ah Loo Memorial
Scholarship*



Elliott Markell^{'17}
*Kalino Foundation Merit-Based Scholarship
USS Kamehameha Scholarship*

Myla Mckeague^{'20}
*Kamehameha Schools Association of Kaua'i
Scholarship*

Kiersty Mckee^{'20}
Flik Independent Schools Dining Scholarship

Cherelle Momohara^{'20}
*Kamehameha Schools Hawai'i Parent
Teacher Organization Scholarship*

Michael Murata^{'20}
Frank & Ruth Midkiff Scholarship

Samantha Nakagawa^{'20}
*Mary Atherton Richards Scholarship
Tennyson Keolalani Tom Scholarship*

Haley Nakamura
*Kamehameha Schools Class of 1960
Scholarship
Makaloa Scholarship*

Kori Napaa
Jalene Kanani Bell 'Ohana Scholarship

Jaelyne Navarro^{'20}
Mary Atherton Richards Scholarship

Jake Nishimoto^{'20}
Pauahi Scholarship

Shariah Mae Olomua^{'17}
Johansen 'Ohana Scholarship

Samuel Ostermiller^{'20}
Theodore Richards Scholarship

Tyler-Michael Oribio^{'20}
*Kamehameha Schools Class of 1997
Scholarship*

Evan Padilla^{'20}
*Col. Curtis Kekoa (KS '40) and Nenita
Maldonado Kekoa Scholarship*

Juliana Pakele^{'20}
*Kamehameha Schools Hawai'i Parent
Teacher Organization Scholarship*

Preston Ponteras^{'20}
John A. and Georgia J. Meyer Scholarship

Amaia Rivera
2010 Legends' Scholarship

Sarha Reich^{'20}
*David and Julia Desha Scholarship
Dr. Lori Ann Kim Scholarship*

Tatum Rose^{'20}
*Stanley and Besse Fortuna Memorial
Scholarship*

Kolby Ross^{'20}
*Kamehameha Schools Class of 1957
Scholarship*

Kennies Rowe^{'20}
Richard Lyman, Jr. Memorial Scholarship

Aleiya Sanoria^{'20}
*Frank & Ruth Midkiff Scholarship
Kamehameha Schools Hawai'i Parent
Teacher Organization Scholarship*

Shyann Silva^{'20}
*Kamehameha Schools Kapālama
Association of Teachers and Parents Hō'ihi
Aku, Hō'ihi Mai Scholarship*

Braden Simao^{'20}
Blossom Mossman Nary Scholarship

Camille Slagle^{'20}
Michael "Mikey" Miyake Scholarship

Mikiala Sniffen^{'20}
Pauahi Scholarship

Ihilani Soon
*Kamehameha Schools Class of 1970
Scholarship*

Tatiana Soon^{'20}
Mary Atherton Richards Scholarship

Kohlby Soong
*2017 Great Whites Named Endowment
Scholarship*

Ailana Suehiro^{'20}
*Frank & Ruth Midkiff Scholarship
Pauahi Scholarship*

Mia Symonds^{'20}
Mary Atherton Richards Scholarship

Xavier Tablit
Richard Lyman Jr., Memorial Scholarship

Taylor Takahashi^{'16}
*Charles P.M.K Burrows Hui Lama Science
Scholarship*

Kimberly Ann Takata
Mahi'ai Scholarship

Kadee-Kalia Tamashiro^{'13}
*Amona and Suzel Ho STEM Leaders
Scholarship*

Nicolas Tanaka^{'20}
*David and Julia Desha Scholarship
Reuben Lee Kwai Brandt Scholarship*

Kauilamakahikina Thomas^{'20}
*Kamehameha Schools Hawai'i Parent
Teacher Organization Scholarship*

Jordan Vedelli^{'20}
De Witt Wallace Scholarship

Vincente Venenciano^{'20}
Douglas K.K. Chung Memorial Scholarship

Kaylyn Villanueva
*Kamehameha Schools Alumni Association
West Hawai'i Region, E Nowelo Aku in
memory of William James "Uncle Billy"
Kimi, Jr. Scholarship*

Malie Watanabe^{'20}
*Mary Atherton Richards Scholarship
Pauahi Scholarship*

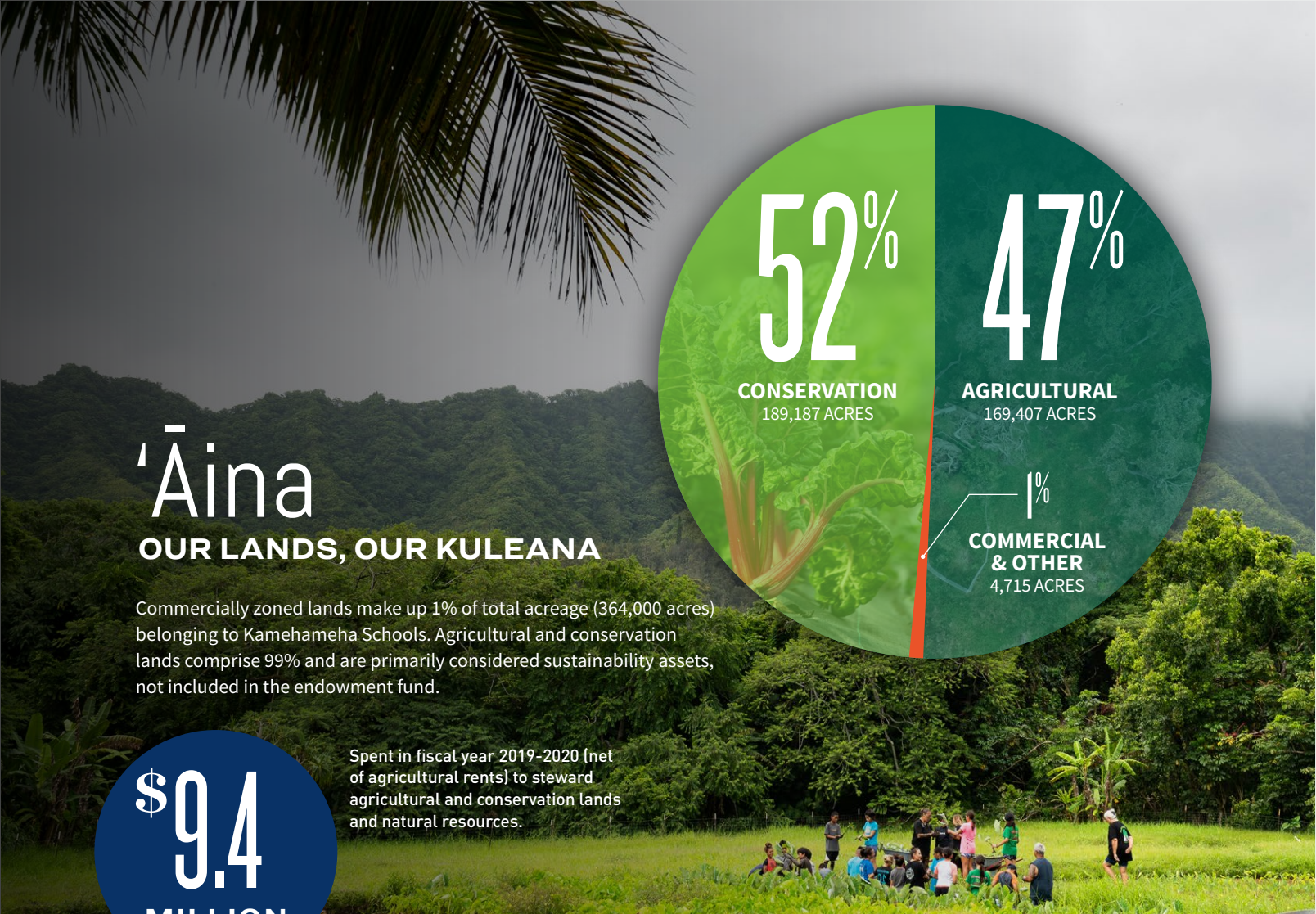
Nevan Watanabe^{'17}
*Kamehameha Schools Maui Parent Teacher
Student Organization 'A'apueo Scholarship*

Kylie Watson^{'10}
Makaloa Scholarship

Kapiolani Wisler
Pa'upena Named Endowment Scholarship

Raelynn Yoshida^{'20}
Pauahi Scholarship

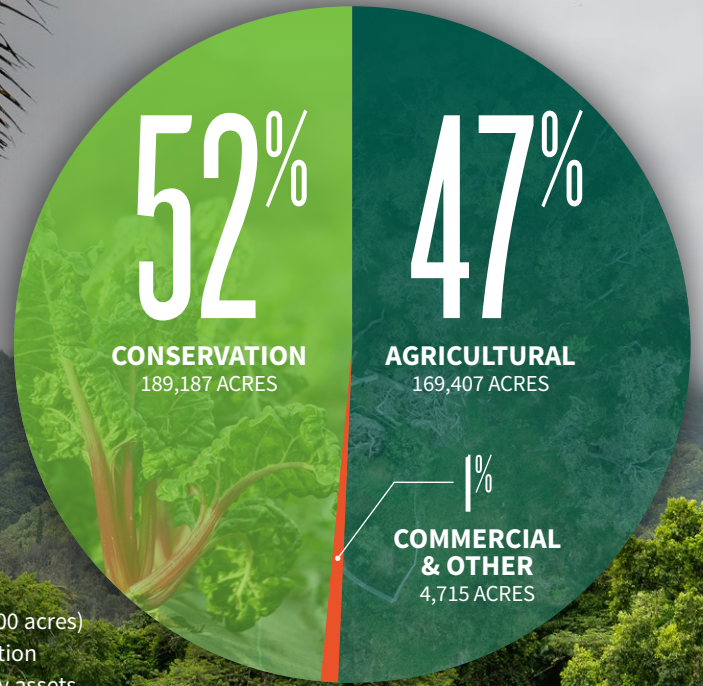




'Āina

OUR LANDS, OUR KULEANA

Commercially zoned lands make up 1% of total acreage (364,000 acres) belonging to Kamehameha Schools. Agricultural and conservation lands comprise 99% and are primarily considered sustainability assets, not included in the endowment fund.



\$9.4
MILLION

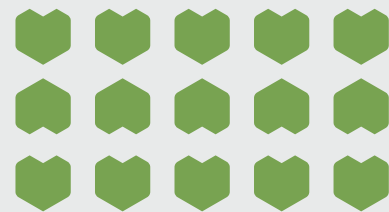
Spent in fiscal year 2019-2020 (net of agricultural rents) to steward agricultural and conservation lands and natural resources.



\$2.1
MILLION

Innovation

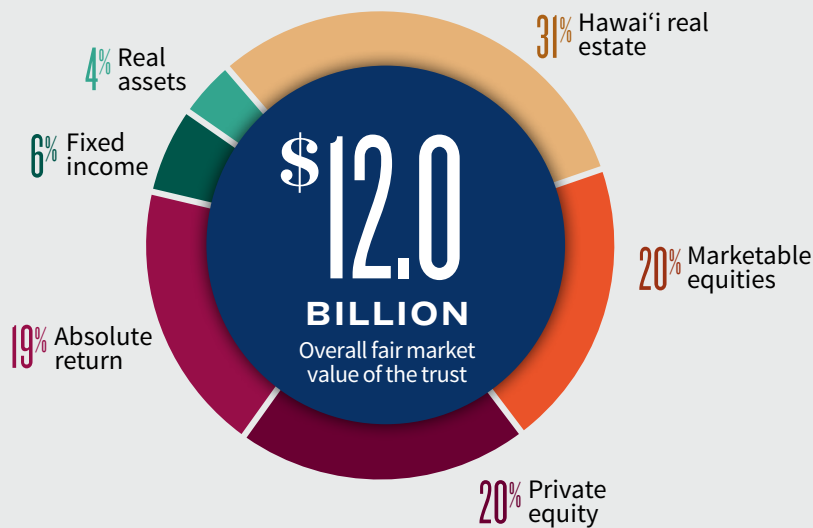
Disbursed to **15** organizations



Endowment

KAMEHAMEHA SCHOOLS TRUST

Kamehameha Schools' mission is 97% supported by its endowment with three percent being supported by tuition, net of financial aid. The endowment was valued at \$12.0 billion as of June 30, 2020. A globally diversified financial assets portfolio of \$8.3 billion, and Hawai'i commercial real estate representing \$3.7 billion at fair market value comprise the endowment's value.



INVESTMENT RETURNS

The goal of Kamehameha Schools' endowment is to provide superior risk-adjusted long-term returns to support its mission in perpetuity. The 10-year return added value versus a policy-weighted average of market benchmarks and added value versus its CPI + 5% objective of 6.7%, an objective designed to provide for real growth and financial equilibrium.

	10 Years Annualized	5 Years Annualized	1 Year
Endowment Fund	8.2%	5.4%	2.5%
Policy Benchmark	7.0%	4.8%	1.0%



64%
1,471
WĀHINE



36%
820
KĀNE

KS EMPLOYEES BY ISLAND



66%
O'ahu
1,523



19%
Hawai'i
433



12%
Maui
282



2%
Kaua'i
36



1%
Moloka'i
9

For more...

including a copy of Kamehameha Schools' audited "Consolidated Financial Statements and Supplemental Schedules" for fiscal year 2019-2020, please visit www.ksbe.edu/annualreports.

Continuing Ke Ali'i Pauahi's Legacy of Giving



“Together, we can continue Ke Ali'i Pauahi's legacy of giving, and more importantly, create a thriving lāhui.”

ALOHA MAI KĀKOU,

As keiki o ka 'āina, the Pauahi Foundation believes education is the groundwork for the future of our Native Hawaiian community. As nā pu'ukū of the Ke Ali'i Pauahi legacy, we believe the classroom is where seeds are planted, and where ideas bloom. The roots of our community are deep and ground us in the most trying times, and there is no better proof of the fortitude of our lāhui than the year 2020.

As communities all over the world faced unprecedented trials, the Native Hawaiian community rallied around our haumāna, providing essential resources for learners to continue their educational journeys, despite a global crisis. Our hui of donors includes the generosity of 885 supporters and seven new endowment partnerships, which awarded over \$850,000 to benefit not only our aspiring haumāna recipients, but the local and global communities that will benefit from their future success.

These students have realized the call to act, to learn, to grow – and can do so today with the support of generations of 'ōiwi leaders, beginning with Ke Ali'i Bernice Pauahi Bishop and advanced by the Pauahi Foundation and our lāhui across the islands.

These legacy gifts and post-high scholarship funds afford the haumāna who enact change daily, from nurses to doctors, from lawyers to sustainable materials engineers, the essential tools to cultivate new opportunities for the 'āina and its keiki. Committed to achievement, invention and impact, these students are the 'ōiwi leaders of tomorrow, building a brighter future one dose, one policy, one roof at a time.

All this is possible for hundreds of beneficiaries this year. Mahalo to our donors, our alumni who support the new generation of stewards and leaders. Mahalo to you who answer the call and find new ways to engage with our mission and support our Kamehameha Schools students across the Hawaiian Islands. Together, we can continue Ke Ali'i Pauahi's legacy of giving, and more importantly, create a thriving lāhui.

Me ka ha'aha'a,

Pono Ma'a

Director, Office of Advancement
Executive Director, Pauahi Foundation



Scholarship impacts

\$1.27M

TOTAL SCHOLARSHIP REVENUE

885

TOTAL NUMBER OF DONORS

7

NEW ENDOWMENT PARTNERSHIP FUNDS



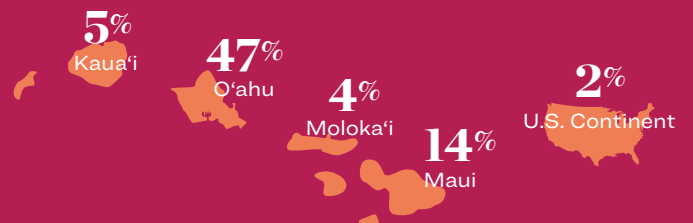
\$854,623

TOTAL AWARDED TO POST-HIGH RECIPIENTS

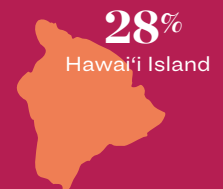
RECIPIENTS BY FIELD OF STUDY

- 23%** Science & Math
- 20%** Literature, Language, and Social Sciences
- 13%** Business
- 11%** Health
- 9%** Education
- 5%** Arts
- 5%** Psychology
- 4%** Engineering
- 3%** Law
- 2%** Environmental Sciences
- 2%** Computer and Information Systems
- 2%** Communications and Journalism
- 1%** Other

RECIPIENTS BY HOMETOWN



RECIPIENTS BY COLLEGE LOCATION





KA HĀ'AWI MANAWALE'Ā

Why we give



Warren Nakupuna Ah Loo Memorial Scholarship

Nakupuna Foundation

It was the dream of Native Hawaiian industrial engineer and business owner **Warren Nakupuna Ah Loo KSK'65** to elevate the Hawaiian community through education. Following his unexpected passing in 2015, his 'ohana – including **Cariann Ah Loo KSK'91**, **Austin Ah Loo KSK'94**, **Lindsay Ah Loo KSK'00**, and Jason Greenawalt – has grown his original company into a family of small businesses and created the Nakupuna Foundation to see his dream fulfilled.

who want to pursue training in place-based learning, and invested in projects to increase access to digital infrastructure.

The creation of the Warren Nakupuna Ah Loo Memorial Scholarship was just the beginning, and the Nakupuna Foundation is excited to be working with the Pauahi Foundation to find new avenues to make the late alumnus' dream a reality. Steering the legacy to new horizons, the Nakupuna Foundation is introducing a new program: Navigation and Voyaging Pathway, which will develop and nurture the ocean navigators of tomorrow.

Lindsay Ah Loo, executive director of the Nakupuna Foundation, sees this as a special opportunity to contribute to the vibrancy of the lāhui. "There is much to gain from exploring the rich connections between 'ike kūpuna and modern science and technology," she said. "We hope this program will be a touchstone for 'ōiwi leaders as they address different types of local and global challenges in the 21st century."

Under the direction of a select group of kumu, limahana and alaka'i, the new program will work closely with the Polynesian Voyaging Society. This program, alongside the Warren Nakupuna Ah Loo Memorial Scholarship, will shape the futures for whom Ke Ali'i Pauahi's legacy was established: the aspiring navigators and the 'ōiwi leaders from across the islands, including KS' Hawai'i, Kapālama, and Maui campuses.

“As students at Kamehameha, we were direct beneficiaries of Ke Ali'i Pauahi's legacy. Time has deepened our appreciation for her extraordinary vision, and it is our kuleana to perpetuate her generosity of spirit.”

- Cariann Ah Loo, chair of the Nakupuna Foundation

Since partnering with the Pauahi Foundation in 2016, the Nakupuna Foundation has established the endowment for the Warren Nakupuna Ah Loo Memorial Scholarship and subsequently awarded multi-year scholarships to three recipients: **Jade Ishii KSK'18** (Massachusetts Institute of Technology), **Chianti Motta KSH'19** (Pacific University), and **Kaao Kekumano KSK'20** (Harvard University). The Nakupuna Foundation has also offered internships to college students, committed financial support for teachers

Give with Pauahi

LET US COME TOGETHER AND TRANSFORM LIVES IN OUR HAWAIIAN COMMUNITY! Help us continue Pauahi's legacy of giving by volunteering time and/or making a donation to the Pauahi Foundation to help uplift the Hawaiian community.

LEARN MORE AT PAUAAHI.ORG.

2019-2020

Donors

We are grateful for the generosity of donors who have included the foundation in their charitable giving. Because of these gifts, Pauahi Foundation was able to support more than 420 aspiring Native Hawaiian college students this year. As an educational institution that transforms lives within the Hawaiian community, our mission has never been more relevant. Our giving hui celebrates the breadth and diversity of our donors and the impact of their support. Mahalo for entrusting us with your gifts and helping to further Ke Ali'i Pauahi's legacy.

KEY † Deceased
S Kamehameha Schools staff

We are deeply humbled and grateful for Kamehameha Schools alumni, faculty, and staff who made a gift to Pauahi Foundation this fiscal year in addition to their dedicated service. All donors listed are recognized for contributions made during the fiscal year from July 1, 2019 to June 30, 2020.

KA HUI KŪLANIHĀKO'I \$10,000 OR MORE

Julian K. Ako^{'61}
Jacqueline Mahi Erickson^{'58}
Elizabeth Hokada
Vivian Kaiaokamalie
Glenn & Lytle^{'74} Takemoto
Robert & Jane^{'65} Terry
Ameriprise Financial
Bomat Holding Company
Charles Schwab
Compass Group USA, Inc.
Kalino Foundation / Kalino LLC
Kamehameha Schools
Kamehameha Schools Association of Teachers
& Parents
Kamehameha Schools Hawaii Parents &
Teachers Ohana
Kamehameha Schools Kapalama Campus
Merrill Lynch, Pierce, Fenner & Smith Inc.
Na Alii Consulting & Sales LLC
Schwab Charitable Fund
Zierk Family Foundation

KA HUI UA LOKU \$5,000 – \$9,999

Anonymous (1)
Mary Ann Meleana M. Aloy^{'60, †}
Dawn Farm-Ramsey^{'71}
Leianne K. Lee Loy^{'82}
Leimalama Lee Loy
Lauren Nahme^S
Crystal K. Rose^{'75, S} and Richard S. Towill
Timothy^S & Marie Slottow
Livingston Jack Wong, Jr.^S & Kimi Oyama
Pacific Fleet Submarine Memorial Association
Native Hawaiian Chamber of Commerce
Kamehameha Schools Association of Kaua'i
Benevity, Inc.
A'A Appraisal Services Hawaii, LLC
Okahara and Associates, Inc.

KA HUI UA NĀULU \$2,500 – \$4,999

Marites D. Calad
Marcy E. Fleming^S
Amona K. Ho
Dr. Claire K. Hughes^{'54}
Dr. Lori Ann Kim^{'97}
Robert & Carol Momsen
Nelson Wong^{'87, S} & M. Kahealani Naeole-
Wong^{'87, S}
Ben^S & Cindy Salazar
Harry T. Suzuki, Jr.^{'95}
Frank & Sharen Sylva
Cody K. Yancey^{'06}
Burton S. Yuen^S
First Hawaiian Bank
Kamehameha Schools Maui Campus Parent
Teacher Student 'Ohana
Nanea Foundation, Inc.
Snyder Family Foundation
The Cheeryable Foundation
Ushijima Architects, Inc.
Ward Management Dev. Comp., LLC
YourCause, LLC

KA HUI KUĀUA \$1,000 – \$2,499

Anonymous (9)
C. Kuni Agard^{'95}
Joyce Ahuna-Kaaii
Brendan R. Akamu^{'79}
Benjamin^{'90} & Patricia Ancheta
Michael^{'66} & Chu Cha Asam
Violet W. Awana
Gaye K. K. Beamer
Augusta-Helen L. Bento^{'50, †}
Beppu 'Ohana: Len, Wanda, Mark^{'96}, Sarah^{'96},
& Mackenzy^{'24}
Sean^{'71} & Mary Browne
Zandin U. M. Burke^{'12}
Duane^{'72} & Bette Chun
Loy Cluney^{'60}
Kevin Cockett^{'84, S}
Hiram^{'59} & Trudi de Fries
Kelly Beth Dukelow^S
Sherylann M. L. Enomoto^{'90}
Fred & Deborah^S Erskine
William Kalani Fong^{'91}
Alika^{'94} & Haunani^{'97, S} Fujimoto



Todd V. Gray⁵
 Randall⁶⁸ & Nancy Hee
 Laurie Ho⁷⁶
 Darrel⁵ & Denise Hoke
 Jon T. Iwatani⁵
 Rachelle L. Kaaihili⁵
 Corbett⁵ & Sandy Kalama
 Eric⁷⁶ & Janis^{76, 5} Kane
 Micah^{87, 5} & Joelle Kane
 James⁶⁶ & Valerie⁶⁶ Kardash
 John⁷¹ & Suzette⁷¹ Kaulukukui
 Nalani^{94, 5} Blane & William⁹⁴ Kealaiki
 Arthur & Rene Kimura
 Bobbie P. Lau⁸⁴
 Alison L. Leary⁵
 Herbert Levy
 Arthur⁵⁷ & Rhoda Loebel
 Kim Lorch & Diana Malotte
 S.⁷⁹ Pono & Danene Lunn
 R. Kawika Makanani⁶⁶
 Drs. Emanuel Drechsel & Teresa Makuakane-
 Drechsel⁷¹
 Charmayne Malloy
 Martin P. Martinson⁶⁸
 Louis⁶² & Anna Marie Medeiros
 M'liss Moore^{78, 5} & Devin Alford
 Pamela A. Nako⁶⁹
 Marc C. Naval⁹⁶
 Jason O. Navarro⁸⁹
 Eli D. Panee, Jr.⁵⁹
 Diane J. Plotts
 Robert & Elizabeth Reniers
 Buddy K. K. Santos¹⁵
 Dana K. Sato⁵
 Kamika Smith⁷⁹
 Clarence⁵⁴ & Mary Soong
 Godfrey R. Sullivan
 Henry & Dancine^{79, 5} Takahashi
 Walter^{84, 5} & Tammy Thoemmes, III
 Travis⁸⁹ & Joby⁸⁹ Tom
 Creighton Tuzon⁸⁹
 Jennie L. Watson⁷⁶
 Keevin Kawai Winchester¹⁰⁵
 Lisa K. Wisotzky
 Georgia H. Wong⁷⁰
 Benjamin⁴⁹ & Muriel⁵⁰ Yin
 AM Partners Inc.
 American Enterprise Investment Services, Inc.
 American Heart Association, Inc.
 Bank of America
 Belt Collins Hawaii, LLC
 Big Island Toyota
 E Ala E Hawaiian Culture Center
 First Hawaiian Bank Foundation
 Fukunaga Electrical, Inc.
 Golden Arches Merchants Association of
 Hawaii

International Education Center
 Kamehameha Schools Alumni Association -
 West Hawai'i Region
 Kamehameha Schools Communications
 Division
 Kamehameha Schools Internal Audit Division
 Kamehameha Schools Maui Campus
 Kamehameha Schools Office of Advancement
 Kamehameha Schools Office of the Chief
 Executive Officer
 Kamehameha Schools Office of Trustees
 Kamehameha Schools Strategy &
 Transformation Division
 KTA Super Stores
 Manuhealii Inc.
 Myounghee NOH & Associates LLC
 Oahu Air Conditioning Services, Inc.
 Paradise Landscape Maintenance Inc.
 Pearl Harbor Hawaiian Civic Club
 R. M. Towill Corporation
 Shell Oil Company Foundation
 The Beef Jerky Store
 The Hula Bowl LLC
 The San Francisco Foundation
 TNT Payroll Services, Inc.

Leah K. Freitas¹⁰¹
 Ronald T. Goo
 Priscilla K. L. H. Hanna⁶⁵
 Kanani Young Harris^{90, 5}
 Pamela Hinchman
 Betty M.L. Hiram^{54, †}
 Chad K. Imano
 Ross & Nikki⁵ Iwata
 Naomi L. Kahumoku-Ahuna⁸²
 Anthony⁶⁵ & Diana Kam
 Bernard⁷³ & Holly Kaopuiki
 Sydney⁶⁹ & Kawehi⁷⁶ Keliipuleole
 Kevin K. Kidder⁹⁵
 Curtis & Joy⁵ Kono
 Ian P. K. S. Kosora⁹¹
 Frances Laikona⁵
 Stanley W. O. Lum⁶⁶
 Pono K. Ma'a^{82, 5}
 Leeden⁹² & Tara⁹⁴ Malloe
 Patricia Matsumoto⁵
 Steven^{91, 5} & Day⁹¹ Mau
 The Mau 'Ohana⁹¹
 Elliot⁵ & Ruth Mills
 Gabriel L. Naeole^{85, 5}
 Stanley & Mavis Nagatani
 Lewis Naumchik⁷⁷
 Catherine Ngo
 Sheryl L. Nicholson⁵
 Benjamin & GERALYN Nihipali
 Nathanael C. Oda⁰³
 Rowena Rivera
 Dustin Sellers
 Dennis⁷⁶ & Lauren Shak
 Carrie E. Shoda-Sutherland⁵
 Oswald⁵⁰ & Kuule⁵⁰ Stender
 Larry M. Sumida⁵
 Lawrence N. Takao
 Melvin & Linda Tom
 Bran-Dee Torres^{93, 5}
 Lance^{83, 5} & Marcy Wilhelm
 Alexander & Baldwin, LLC, Series T
 Bank of America Employee Giving Campaign
 County of Hawaii Department of Finance
 Eli Lilly and Company Foundation
 Foodland Super Market Limited
 Friends of Hawaii Robotics
 Howard Hughes Mgmt. Co., LLC
 Kamehameha Schools Administration Group
 - Napoukaha
 Kamehameha Schools Class of 1990
 Kamehameha Schools Kapālama Student
 Activity Funds
 LPL Financial
 United Way of the Columbia-Willamette

KA HUI KO'I AWE

\$500 – \$999

Anonymous (4)
 Glennie G. Adams^{78, 5}
 Ulima F. Afoa⁵
 Kapuaonalani Aiu-Yasuhara^{11, 5}
 Keith Kalani Akana⁷⁵
 Darcy K.⁸² & Jillinda A.⁸² Barrios
 William⁶⁶ & Phyllis⁶⁶ Beimes, III
 Keolu^{76, 5} & Luann⁵ Bento
 Viktor & Alyssa^{70, 5} Braffith
 Dr.⁶¹ & Mrs. Lawrence Brede, Jr.
 Courtney M. Brown
 Frederico L. Cachola, Jr.⁵³
 Winfred⁷⁶ & Cindy^{76, 5} Cameron
 Richard⁶⁰ & Jan⁶⁰ Ching
 Dr.⁷⁹ & Mrs. Francis K. Chun
 Dr. Taran^{95, 5} & Nizhoni Chun
 Frederick Cobb-Adams^{94, 5}
 Laurene Cockett
 Ronald A. Cox⁵
 Elizabeth Jane Culp⁷⁸
 Stanley C. Dahlin⁶¹
 Buddy Dees, Jr.
 Thomas Kā'eo⁵ & Faylene Mahina Duarte⁹⁴
 Hailama^{89, 5} & Elena⁹³ Farden

Imua nā haumāna



John Aiwohi

SCHOLARSHIP RECIPIENT SPOTLIGHT

2014 Dan and Rachel Mahi Educational Scholarship

2014 Kamehameha Schools Class of 1958, “Na Mea Waiwai A Pauahi” Scholarship

Chaminade University Ho’oulu STEM Scholarship

“It would be very easy to conclude that one person can make a difference, and indeed, in some instances, one person is all it takes to provide the spark of change,” said John Aiwohi, 2014 Dan and Rachel Mahi Educational Scholarship and 2014 Kamehameha Schools Class of 1958, “Na Mea Waiwai A Pauahi” Scholarship awardee.

Aiwohi has been awarded nine scholarships since 2014 through the Pauahi Foundation en route to completing his bachelor’s degree in nursing from Chaminade University, and pursuing a doctorate in nursing practice at the University of Hawai’i at Hilo.

For those that don’t know Aiwohi’s story, he looks like any other registered nurse at Castle Medical Center in Kailua. However, after being homeless for more than 20 years and overcoming addiction, he is a testament to the power of change. Aiwohi said, “If you know anything about addiction and sobriety, it is a daily challenge that requires strength of character and determination every moment of every day.”

When catching up with Aiwohi after five years of hard work and perseverance, he is

approaching his next major milestone. Aiwohi’s strength and determination has culminated in a very special moment: the purchase of his first home, an accomplishment he described as “joyous and overwhelmingly emotional.” He credits those donors whom, without ever meeting him, have supported his journey with the spark of change that he needed to get to where he is today.

Aiwohi recalls disappointing so many friends and family members over the years, and credits the scholarship donors as a motivating factor and invisible driving force. With both his parents deceased prior to graduation, Aiwohi focused on making the donors and supporters of the Pauahi Foundation programs proud to have been a part of his success story, just as Aiwohi was honored and humbled by their support.

Over the years, Aiwohi expressed repeatedly that he hopes to serve as another example that life can change, things can get better, and there is hope. At age 48, he encourages everyone to remember his story and achievements when they evaluate whether to support even the most unlikely and unconventional scholarship candidates.



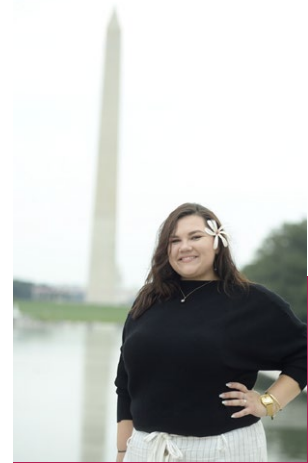
Four years ago, scholarship recipient Billie-Ann Bruce was introduced to the Makawalu readers. A resilient teen who had to move out of her foster care home as a senior at Pāhoa High and Intermediate School, Bruce and her classmates had to transfer to Kea'au High School due to safety concerns resulting from the Kīlauea lava flow in 2014. Despite these setbacks and having to quickly take on the responsibilities of an adult, Bruce graduated in 2015 and enrolled at Hawai'i Community College.

That same year, Bruce received her first scholarship from the Pauahi Foundation through the Nanea Scholarship Fund. She has since gone on to receive eight additional scholarships to help her through her educational journey. She felt empowered by the donors of the Pauahi Foundation as

she furthered her mission to help displaced youth within the community and pursued a bachelor's degree.

With support from the foundation, Bruce was able to focus completely on her work as a youth partner for EPIC 'Ohana and as a student continuing to strive toward making policy changes.

Today, Bruce is working on completing double bachelor's degrees and hopes to apply for law school. She said, "The sense of community and support that I have felt over these last couple of years is something that goes a long way when life and school seem overwhelming. The support I've received throughout my academic journey has helped keep my dreams alive."



Billie-Ann Bruce

Nanea Scholarship Fund



Carly Yong

Goldman Sachs/Matsuo Takabuki Commemorative Scholarship

Kamehameha Schools Class of 1973 "Proud to be '73" Scholarship

Native Hawaiian Chamber of Commerce Scholarship

USS Kamehameha Scholarship

In 2020, Pauahi Foundation awarded scholarships to 417 bright 'ōiwi learners and leaders who are committed to affecting change across Native Hawaiian communities. When a single individual can change the tide of the future, imagine how more than 400 awardees can change the world.

Carly Yong is one such scholarship recipient, who received her scholarship awards during an economically challenging time of historic proportions and invested the gifts by attending the master's program at Harvard University for Business Management.

"As a recipient of your 2020 scholarship fund, you are allowing me to focus on the most important aspect of furthering my education: building community and attending conferences that will in turn benefit the greater Native Hawaiian community," said Yong of the Pauahi Foundation scholarship awards.

The funds awarded to Yong – the Goldman Sachs/Matsuo Takabuki Commemorative Scholarship, the Kamehameha Schools Class of 1973 "Proud to be '73" Scholarship, the Native Hawaiian Chamber of Commerce Scholarship, and the USS Kamehameha

Scholarship – afford Carly the opportunity to focus on her thesis around HempHome, which utilizes the byproduct of industrial hemp to create sustainable and chemical-free building insulation materials.

Today, Yong is a project manager at Recover Green Roofs in Boston, specializing in green roof design-building. The career opportunity has allowed her to hone her skills, increase her knowledge, and grow confidence in leading rooftop vegetative garden design and construction initiatives at notable institutions.

"By offering future clients eco-friendly design-build services, I believe we can literally build a more sustainable future," Yong said. "Through designing spaces that complement our natural landscape and choosing building materials that sequester and reduce our carbon footprint, we can better preserve our island home."

Her post-graduation plans also include launching a Hawai'i-based, Native Hawaiian, woman-owned business specializing in sustainable construction, redevelopment, and project management.

MEANINGFUL IMPACT

2019-2020 Pauahi Foundation Scholarship Recipients

Maveric Abella¹⁵

Makaloa Scholarship
Richard Marks Named Endowment
Scholarship

Marie Abihai²⁰

KGMB/KHON Video Production Scholarship
Pauahi Scholarship

John Aiwohi

Denis Wong & Associates Scholarship
Kamehameha Schools Class of 1960
Scholarship
Kamehameha Schools Class of 1974
Scholarship
Kamehameha Schools Class of 2001
Scholarship

Koanilea Alquiza-Kenney²⁰

Kamehameha Schools Association of Kaua'i
Scholarship

Jamye Grace Aquino Kamalii²⁰

Mary Atherton Richards Scholarship

Dyson-John Arakaki²⁰

Kamehameha Schools Hawai'i Parent
Teacher Organization Scholarship

Megan Baldado²⁰

Kamehameha Schools Hawai'i Parent
Teacher Organization Scholarship

Fabian Bautista

Yin 'Ohana Named Endowment Scholarship

Elena Borge²⁰

Pauahi Scholarship

Camryn Chinen¹⁷

Hawaii Lodging and Tourism Association
Pouhana Hōkele Scholarship

Bailey Choy

Goldman Sachs / Matsuo Takabuki
Commemorative Scholarship

Truman Ray Chun⁰⁸

Makaloa Scholarship

Quinn Curammeng²⁰

Kamehameha Schools Association of Kaua'i
Scholarship

Drew David's

Gladys E. and Clifford T.F. Chun Scholarship

Sydney Decosta²⁰

Kamehameha Schools Class of 1968 "Ka Poli
O Kaiona" Scholarship
Kamehameha Schools Class of 1972
Scholarship
Mary Atherton Richards Scholarship

Keegan Dees

Patrick L. Hiram - John S. Freitas Scholarship

Jei Li Dela Cruz²⁰

Kamehameha Schools Association of Kaua'i
Scholarship

Nalehua'o Puna Donlin

Stanley & Janet Zisk Scholarship

Keaton Downing²⁰

Waipa Nishimura Memorial Scholarship

Kaluhea Fay Dudoit²⁰

Mary Atherton Richards Scholarship

Kayla Enanoria²⁰

Pauahi Scholarship

Isabelle Faagata²⁰

Mary Atherton Richards Scholarship

Kennedy Flores

Ula Baker Sheecha Scholarship

Jazz Francisco

Roy L. Cachola Scholarship

Kamalani Freitas²⁰

Mary Atherton Richards Scholarship

Josias Fronda²⁰

David Lorch Music Scholarship
Keola & Kapono Beamer Scholarship
Makaloa Scholarship
Pono & Louise Beamer Scholarship

Angela Gabriel

Stanley & Janet Zisk Scholarship

Kyra Gomes²⁰

Blaise A. Kepo'okelaokakai Baldonado
Scholarship
Kamehameha Schools Hawai'i Parent
Teacher Organization Scholarship
Theodore Richards Scholarship

Marissa Gomes

Kamehameha Schools Class of 1970
Scholarship

Kaihehau Goo²⁰

Kamehameha Schools Association of Kaua'i
Scholarship

Steven Gushiken²⁰

Jared Keanu Sylva Alvarez Named
Endowment Scholarship

Logan Hansen

Makaloa Scholarship

Evyn-Bree Helekahi-Kaiwi

John and Reiko Kuga Phillip Scholarship

Kaohinani Ho²⁰

Kamehameha Schools Hawai'i Parent
Teacher Organization Scholarship

Kiana Hose-See²⁰

Kamehameha Schools Hawai'i Parent
Teacher Organization Scholarship
Tauati 'Ohana Scholarship

Kukamaehumakakoakalani Inaba²⁰

John A. and Georgia J. Meyer Scholarship

Ethan James²⁰

Pauahi Scholarship

Christina Kahapea

Lokomaika'i Scholarship

Lori Kaiama

Elizabeth Ku'ulei Bell Moloka'i Education
Scholarship

Tihani Jayme Kalaaukahi

Makaloa Scholarship

Christina Kaleiwahea

1982 Green Machine Scholarship
Choy-Kee 'Ohana Scholarship
Kamehameha Schools Class of 2001
Scholarship

Terran Kaleiwahea¹⁰

David and Julia Desha Scholarship

Debra Kaluna

William K. and Julia T. Kapololu Named
Endowment Scholarship

Dane Kaulukou-Chang²⁰

Flik Independent Schools Dining Scholarship

Shyla-Ann Keaunui

Kamehameha Schools Class of 1980
Scholarship

Makaiwakeala Kekoa²⁰

Mary Atherton Richards Scholarship

Tiffany Kimokeo

Dan and Rachel Mahi Educational
Scholarship

Kamahao Kini-Lopes²⁰

Michael "Mikey" Miyake Scholarship

David Kohara²⁰
Kamehameha Schools Hawai'i Parent
Teacher Organization Scholarship

Nicole Koochi
Makaloa Scholarship

Jacey-Li Lam-Fonokalafi²⁰
Desha-Mulholland Scholarship

Jaslyn Langtad
Hawaii Lodging and Tourism Association
Pouhana Hōkele Scholarship

Seana Lanias¹⁹
Native Hawaiian Chamber of Commerce
Scholarship

Natalie Lau
George Hi'ilani Mills Scholarship
George T. Kanalu Young Memorial
Scholarship

Taylor Lui-Kwan
Goldman Sachs / Matsuo Takabuki
Commemorative Scholarship

Joby Lum²⁰
Edward Lapsley Ho'opa'a Mau Scholarship

Leah Maddela¹⁷
Bernice Leinani Kuakini Ahlo and Henry
Keanu Ahlo Scholarship

Alyssa Mahoe²⁰
John A. and Georgia J. Meyer Scholarship

Ian Martins
Kamehameha Schools Alumni Association –
Maui Region Scholarship
Kamehameha Schools Association of Maui
Scholarship

Mikiala Maynard
Ka Papa o Kanaono-Kūmāono, Class of '66
Scholarship
Kamehameha Schools Class of 1975
Scholarship

Matthew Mendonza⁰⁶
Iwalani Carpenter Sowa Scholarship

Charlsie Miguel-Cavaco
Makaloa Scholarship

Tanner Moku²⁰
Henry Lee Scholarship

Brianne Nagamine
Ka Papa o Kanaono-Kūmāono, Class of '66
Scholarship
U'ilani Stender Scholarship

Makena Nagasako²⁰
Kamehameha Schools Association of Maui
Scholarship
Kamehameha Schools Maui Parent Teacher
Student Organization 'A'apueo Scholarship

Amber Nakihei
Kamehameha Schools Association of
Teachers and Parents Moloka'i "Elua"
Scholarship

Trisha Nobriga
George Hi'ilani Mills Scholarship
Kamehameha Schools Association of Maui
Scholarship

Britnee Padilla²⁰
Kamehameha Schools Kapālama
Association of Teachers and Parents Hō'ihi
Aku, Hō'ihi Mai Scholarship

Jamie Pagan
Kamehameha Schools Class of 1972
Scholarship

Konnor Palmeira²⁰
Makaloa Scholarship

Kay-Leigh Polido²⁰
Kamehameha Schools Hawai'i Parent
Teacher Organization Scholarship
Mary Atherton Richards Scholarship

Aleina Reyes²⁰
Mary Atherton Richards Scholarship

Keahilele Reyes
Makaloa Scholarship

Kuakaloa Robinson
David and Julia Desha Scholarship

Isaiah Sabey¹⁷
Native Hawaiian Chamber of Commerce
Scholarship

Cody-John Sakamoto
Kamehameha Schools Association of Maui
Scholarship

Brittney Saldania¹³
Kunuiākea Scholarship

Titus Sato
Na Pua Mae'ole o Kamehameha Class of 1953
Scholarship

Derek Hardy Soong²⁰
Kamehameha Schools Association of Kaua'i
Scholarship

Naniiloa Spaar²⁰
Pauahi Scholarship

Jordynneelynlesly Stevens
Kamehameha Schools Class of 1958 "Nā Mea
Waiwai a Pauahi" Scholarship

Raven Sylva
Kamehameha Schools Class of 1973 "Proud
to be '73" Scholarship
Kamehameha Schools Class of 1993 Nā Lei
Kukui Scholarship
The Villa 'Ohana Ho'iho'i Scholarship

William Thompson²⁰
Ula Baker Sheecha Scholarship

Tabitha Tomori²⁰
Mary Atherton Richards Scholarship
Pauahi Scholarship

Naia Torres²⁰
Mary Atherton Richards Scholarship

Maegan Tupinio
Rebecca Lamahilani Haalou Medeiros
Scholarship

Kyla-Marie Turner²⁰
Kamehameha Schools Hawai'i Parent
Teacher Organization Scholarship

Kaimakani Ulansey²⁰
KGMB/KHON Video Production Scholarship

Becky Umiamaka⁰⁶
Daniel Kahikina and Millie Akaka Scholarship
Kamehameha Schools "Imua 77"
Scholarship
Stanley & Janet Zisk Scholarship

Natalie Walsh
Native Hawaiian Chamber of Commerce
Scholarship

Ashley Wendt¹²
Kamehameha Schools Maui Parent Teacher
Student Organization 'A'apueo Scholarship
Randy Wayne Ahuna Scholarship

Kainani Wills⁰⁶
Kamehameha Schools Class of 1968 "Ka Poli
O Kaiona" Scholarship
Kamehameha Schools Class of 1975
Scholarship

Chelsea Yin
Makaloa Scholarship

Carly Yong
Goldman Sachs / Matsuo Takabuki
Commemorative Scholarship
Kamehameha Schools Class of 1973 "Proud
to be '73" Scholarship
Native Hawaiian Chamber of Commerce
Scholarship
USS Kamehameha Scholarship

Kalani Young
2010 Legends' Scholarship
Kamehameha Schools Class of 1979
"Ho'okupono" Scholarship

Build for tomorrow

Cultivating communities so keiki can thrive



Ho'oulu 'āina, ho'ōla lāhui. Ma ke kūlana luna ho'okele o ka Māhele Waiwai Pa'a Pā'oihana o Ke Kula 'o Kamehameha, ua kūpa'a 'o Walter Thoemmes KSK '84 ma ke kuene pono 'ana i nā 'āina pā'oihana o KS. 'O kēia kuene 'ana ka mea e loa'a mai ai ke kālā e kāko'o ana i ka nu'ukia ho'ona'auao o Ke Ali'i Pauahi, me ka ho'okahua 'ana i nā honua like 'ole e ulu pono ai nā kaiaulu.

“Oiai, ho'olako 'ia ko mākou nu'ukia ho'ona'auao e ke kālā loa'a, ua hiki iā mākou ke ho'omohala i nā kaiaulu i 'oi aku ka ikaika a me ke kūpa'a no ke kāko'o 'ana i kēia lāhui ola,” wahi a Thoemmes. “Aia ma ka 'īkoi o ko mākou kuana'ike he mana'o pa'a no ke 'ano e hāpai ai ka mo'omō'ali waiwai pa'a pā'oihana i ke ola pono o ka lāhui a me ka hiki i nā keiki ke noho, a'o, a alaka'i ma Hawai'i nei.”

Ma nā ka'akālai ho'olālā hikiāloa o KS, ho'omaka-koho 'ia ke kūkulu kaiaulu 'ana ma o ke “kahu 'āina” 'ana e ho'ohua mai ana i nā kaiaulu lupalupa; he 'oia'i'o, he kama'āina, a he ho'ohui 'ia o ka wā ma mua me nā pahuhopu no ka wā e hiki mai ana.

'O Kapālama Kai kekahi o ia mau kaiaulu. 'O ka wānana 20 makahiki no kēia mau 'eka he 105 o ka 'āina pā'oihana ma ke ahupua'a 'o Kapālama, 'o ia ho'i ka ho'opukapuka hou 'ana iho, i mea e kūkulu 'ia ai he kaiaulu e 'ānoni ana i nā pahuhopu pā'oihana, mo'omeheu, a me ka ho'ona'auao.

Ke 'i'ini pū nei 'o KS e ho'opukapuka hou ma loko o ke kaiaulu 'o Waipahu. Aia ma kahi e pili pū ana i ka Hale Ho'olulu Ka'aalahao 'o Pouhala, a 'o ka pahuhopu o kēia pāhana, 'o ia ka ho'olako 'ana i nā hale noho kumukū'ai kūpono a pēia pū nā pō'aiapili palekana e ulu ai nā pā'oihana ma ia mau wahi pili ala hao.

Ma o ka ho'opukapuka 'ana i ka mo'omeheu, ka na'auao, a me ka 'ekonomia o ke kaiaulu, pēlā e kanu nei ko Kamehameha i nā 'ano'ano o kēia mua aku.

Ho'oulu 'āina, ho'ōla lāhui: Thriving lands, thriving community. As Kamehameha Schools managing director of Commercial Real Estate, **Walter Thoemmes KSK'84** is committed to stewarding KS' commercial properties. This stewardship generates revenue that supports Ke Ali'i Pauahi's educational mission and creates environments for communities to thrive.

“While our financial returns help fund our educational mission, through thoughtful planning and revitalization of KS' commercial lands, we can build stronger, more resilient communities that support a thriving lāhui,” Thoemmes said. “At our core is the idea that the commercial real estate portfolio contributes to Native Hawaiian well-being and enables keiki to live, learn, and lead here in Hawai'i.”

KS' approach to master planning and development prioritizes community building through “placekeeping” that results in vibrant communities teeming with life; it is authentic, familiar, and inclusive of our past and goals for the future.

One such area is Kapālama Kai. The 20-year vision for the 105 acres of commercial land in the Kapālama ahupua'a is to reinvest and create a community that blends commercial, cultural, and educational outcomes.

KS also looks to reinvest in the Waipahu community. Located within walking distance of the brand-new Pouhala Transit Station, this project area aims to provide much-needed affordable housing while also creating opportunities for local businesses within a safe environment and easy access to the rail station.

By investing in the culture, education, and economics of a community, Kamehameha is planting the seeds for future growth.

“It is not enough for us to educate our beneficiaries. We must create opportunities – jobs, housing, and community growth – that will improve their quality of life.”

- **Walter Thoemmes,**
Kamehameha Schools
managing director
of Commercial Real Estate

Normalizing 'ōlelo Hawai'i

**Our cultural identity lives
through the Hawaiian language**

“After all, language, culture and history are central to our identity and are key to our future success.”

- Keoni Kelekolio, Kamehameha Schools director of Hawaiian Language Advancement

Wahie serves as a daily gathering for Kamehameha Schools' Kawaiha'o Plaza limahana (employees) to intuitively share their ho'olauna (introduction) in 'ōlelo Hawai'i (the Hawaiian language).

“This is the first step to normalizing 'ōlelo Hawai'i at KS,” said kumu Ke'ala Kwan, Kamehameha Schools' Ho'okahua Cultural Vibrancy Group's director of Cultural Development.

In addition to supporting these popular morning gatherings, Ho'okahua has worked with over 2,000 KS limahana to cultivate and strengthen Hawaiian identity in the workplace.

From reawakening traditional place names in Kaka'ako, to sharing mo'olelo (stories) of our ali'i and other Hawaiian history makers, 'Ōlelo Kahua (Foundational Hawaiian Language) features monthly classes on Hawaiian culture, history, and 'ōlelo to allow staff to gain cultural knowledge, strengthen connections within their KS 'ohana, and deepen commitments to serve the lāhui.

“'Ōlelo Kahua was a catalyst that opened up people's minds and helped them to understand that 'ike Hawai'i is foundational in our work,” said Keoni Kelekolio, Kamehameha Schools director of Hawaiian Language Advancement. “After all, language, culture and history are central to our identity and are key to our future success.”

And although 'Ōlelo Kahua transitioned into a virtual format last year, Kwan is steadfast saying, “'Ōlelo Kahua continues because of KS' commitment to strengthen and support our language, culture, and identity. The passion, commitment and aloha remain.”



Ho‘okahi Po‘omana‘o

ONE VISION



MA NĀ MO‘OLELO o “Makawalu”, hō‘ike ‘ia nā ala like ‘ole e ho‘oikaika a‘e ai ko ke Kula ‘o Kamehameha i nā ku‘ikahi no ka pono o nā keiki. ‘O ka ‘ōlelo no‘eau “He lei poina ‘ole ke keiki” he ho‘omaopopo ia iā kākou, ‘o nā keiki, he mau pua makamae lākou e pūlama mau ‘ia. Ma ka panina o Makawalu, ke mana‘olana nei mākou i kona hō‘ike mōākāka ‘ana i nā mana‘o waiwai, nā hana hiwahiwa, a me ka nu‘ukia ho‘olōkahi i lawelawe ‘ia aku ma loko o nā lōina Hawai‘i a Kalikiano pū ho‘i, a pēlā pū me nā holomua like ‘ole a puni ka pae ‘āina. E ulu a e ola ho‘i kā kākou po‘e keiki i nā ku‘ikahi a me nā papahana a KS.

THE STORIES featured in “Makawalu” showcase the various ways in which Kamehameha Schools works to strengthen partnerships that place our keiki at the center. The ‘ōlelo no‘eau “He lei poina ‘ole ke keiki” (a beloved child is a lei never forgotten) reminds us that our keiki are a precious garland of pua that we must nurture and care for. As “Makawalu” comes to close, we hope it has captured the rich ideas, efforts, a shared vision and unified mission grounded in Hawaiian and Christian values, and innovations that are being cultivated across the pae ‘āina. May these partnerships and programs nourish our keiki so they can grow and thrive.





MAKA WALU



Kamehameha
Schools®